

Don't miss this quintessential home on the South side of South Table Mountain



Single Family



1920 SQFT



3 Beds



2 Baths



4 Car



0.27 Acre

PROPERTY DETAILS

This exquisite property on the south side of South Table Mountain occupies a corner lot with abundant natural light and stunning mountain views. The home features an open layout with elegant hardwood floors and has been meticulously maintained and upgraded. The back patio is perfect for enjoying sunrises and sunsets. It includes a detached heated three-car garage and RV parking, along with an attached one-car garage that can serve as a bonus or workout room. Located on a quiet street, it's close to hiking and biking trails, just minutes from Downtown Golden, I-70, light rail, restaurants, shopping, schools, and more. This home offers a perfect blend of comfort and convenience.



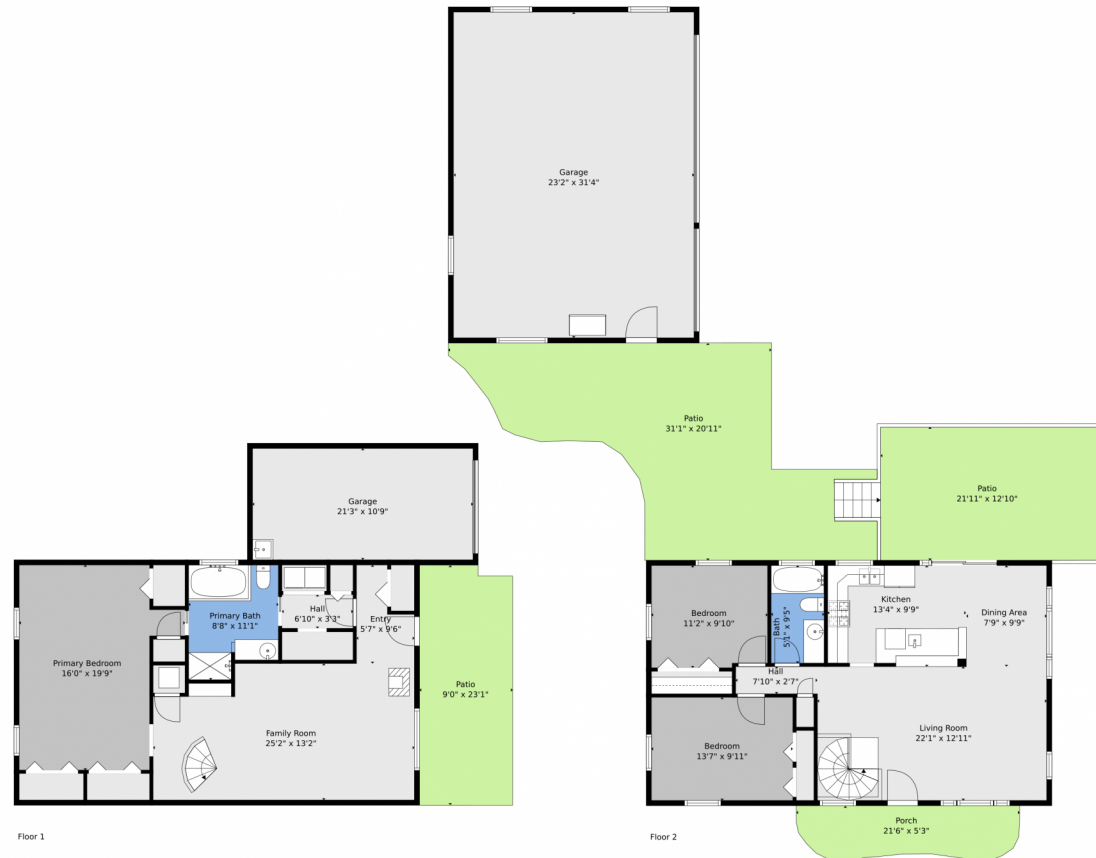
Jennifer Steinert
303-246-2226
jen@madisonprops.com



Scan code
for more
property
details



1460 Russell Street, Golden, CO 80401 — All Levels



TOTAL: 1725 sq. ft.
BELOW GROUND: 863 sq. ft, FLOOR 2: 862 sq. ft
EXCLUDED AREAS: GARAGE: 954 sq. ft, PATIO: 971 sq. ft, PORCH: 102 sq. ft
Floor Plan Created By V1photos.com, Measurements Deamed Highly Reliable But Not Guaranteed.



Disclaimer: Sizes and Dimensions are Approximate, Actual May Vary.



Jennifer Steinert
303-246-2226
jen@madisonprops.com

