




floorplan\_single\_2



 Single Family

 1656 SQFT

 3 Beds

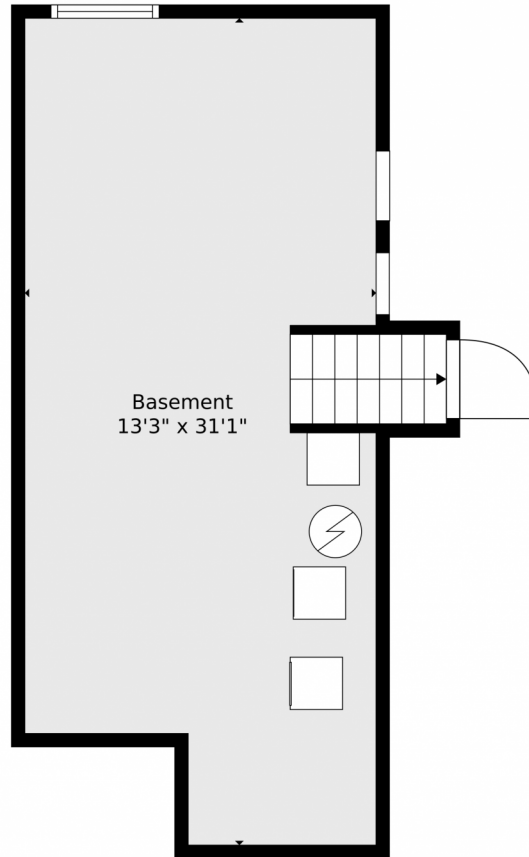
 2 Baths



**Taylor Haas**  
303-665-7368  
taylorh@coloradorpm.com  
<https://www.coloradorpm.com/available-rental-properties-denver>



9320 Hazy Morning Drive, Colorado Springs, CO 80925 – Basement



**TOTAL: 1202 sq. ft**  
BELOW GROUND: 0 sq. ft, FLOOR 2: 361 sq. ft, FLOOR 3: 451 sq. ft, FLOOR 4: 390 sq. ft  
EXCLUDED AREAS: BASEMENT: 395 sq. ft, GARAGE: 356 sq. ft, DECK: 214 sq. ft,  
PORCH: 33 sq. ft, FIREPLACE: 9 sq. ft

Floor Plan Created By V1photos.com, Measurements Deamed Highly Reliable But Not Guaranteed.



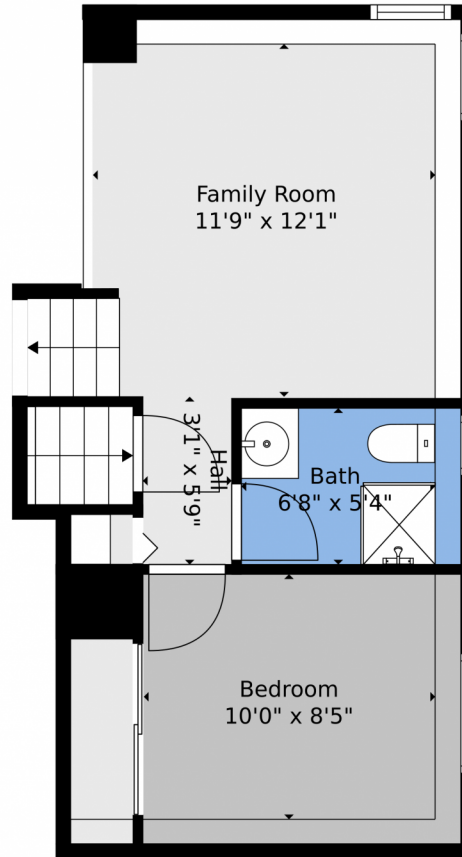
Disclaimer: Sizes and Dimensions are Approximate, Actual May Vary.



**Taylor Haas**  
303-665-7368  
taylorh@coloradorpm.com  
<https://www.coloradorpm.com/available-rental-properties-denver>



9320 Hazy Morning Drive, Colorado Springs, CO 80925 – Lower Level



**TOTAL: 1202 sq. ft**  
BELOW GROUND: 0 sq. ft, FLOOR 2: 361 sq. ft, FLOOR 3: 451 sq. ft, FLOOR 4: 390 sq. ft  
EXCLUDED AREAS: BASEMENT: 395 sq. ft, GARAGE: 356 sq. ft, DECK: 214 sq. ft,  
PORCH: 33 sq. ft, FIREPLACE: 9 sq. ft

Floor Plan Created By V1photos.com, Measurements Deamed Highly Reliable But Not Guaranteed.



Disclaimer: Sizes and Dimensions are Approximate, Actual May Vary.



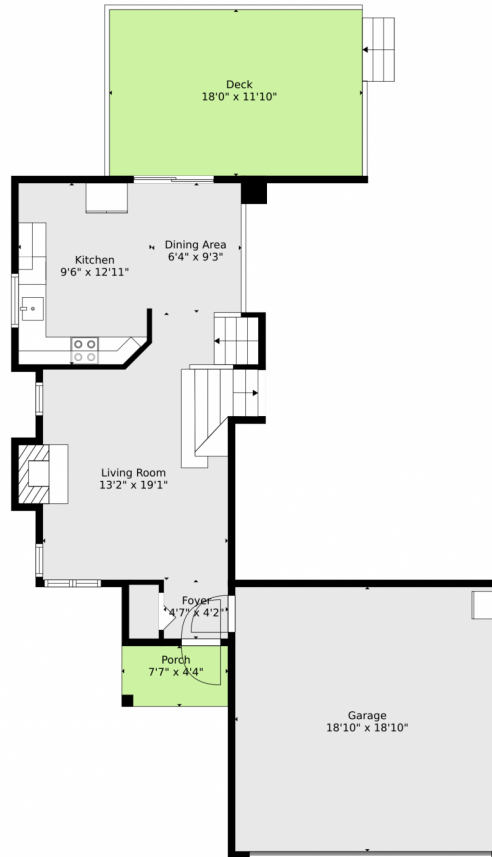
**Taylor Haas**  
303-665-7368  
taylorh@coloradorpm.com  
<https://www.coloradorpm.com/available-rental-properties-denver>



Scan code  
for more  
property  
details



# 9320 Hazy Morning Drive, Colorado Springs, CO 80925 – Main



**TOTAL: 1202 sq. ft**  
BELOW GROUND: 0 sq. ft, FLOOR 2: 361 sq. ft, FLOOR 3: 451 sq. ft, FLOOR 4: 390 sq. ft  
EXCLUDED AREAS: BASEMENT: 395 sq. ft, GARAGE: 356 sq. ft, DECK: 214 sq. ft,  
PORCH: 33 sq. ft, FIREPLACE: 9 sq. ft

Floor Plan Created By V1photos.com, Measurements Deamed Highly Reliable But Not Guaranteed.



Disclaimer: Sizes and Dimensions are Approximate, Actual May Vary.



**Taylor Haas**

303-665-7368

taylorh@coloradorpm.com

<https://www.coloradorpm.com/available-rental-properties-denver>

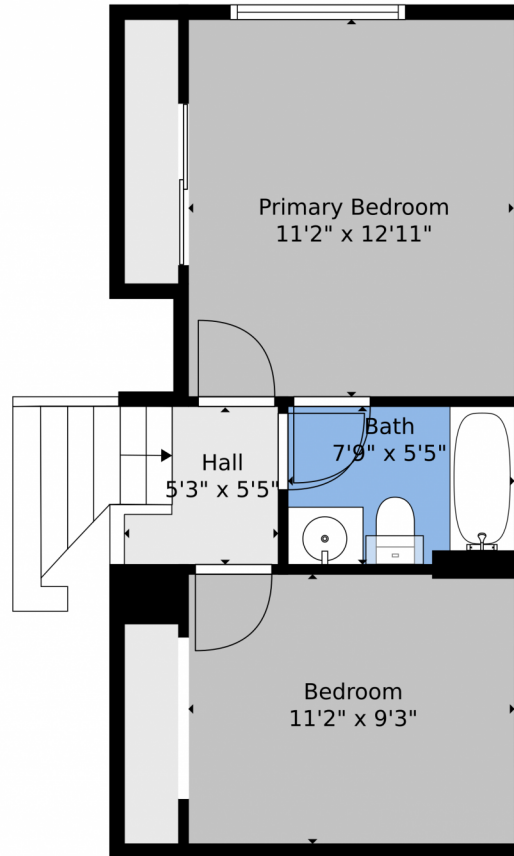


Scan code  
for more  
property  
details





9320 Hazy Morning Drive, Colorado Springs, CO 80925 – 2nd Level



**TOTAL: 1202 sq. ft**  
BELOW GROUND: 0 sq. ft, FLOOR 2: 361 sq. ft, FLOOR 3: 451 sq. ft, FLOOR 4: 390 sq. ft  
EXCLUDED AREAS: BASEMENT: 395 sq. ft, GARAGE: 356 sq. ft, DECK: 214 sq. ft,  
PORCH: 33 sq. ft, FIREPLACE: 9 sq. ft

Floor Plan Created By V1photos.com. Measurements Deamed Highly Reliable But Not Guaranteed.



Disclaimer: Sizes and Dimensions are Approximate, Actual May Vary.



**Taylor Haas**  
303-665-7368  
taylorh@coloradorpm.com  
<https://www.coloradorpm.com/available-rental-properties-denver>



Scan code  
for more  
property  
details



# 9320 Hazy Morning Drive, Colorado Springs, CO 80925 – All Levels



**TOTAL: 1202 sq. ft**  
BELOW GROUND: 0 sq. ft, FLOOR 2: 361 sq. ft, FLOOR 3: 451 sq. ft, FLOOR 4: 390 sq. ft  
EXCLUDED AREAS: BASEMENT: 395 sq. ft, GARAGE: 356 sq. ft, DECK: 214 sq. ft,  
PORCH: 33 sq. ft, FIREPLACE: 9 sq. ft

Floor Plan Created By V1photos.com, Measurements Deamed Highly Reliable But Not Guaranteed.



Disclaimer: Sizes and Dimensions are Approximate, Actual May Vary.



**Taylor Haas**

303-665-7368

taylorh@coloradorpm.com

<https://www.coloradorpm.com/available-rental-properties-denver>



Scan code  
for more  
property  
details

