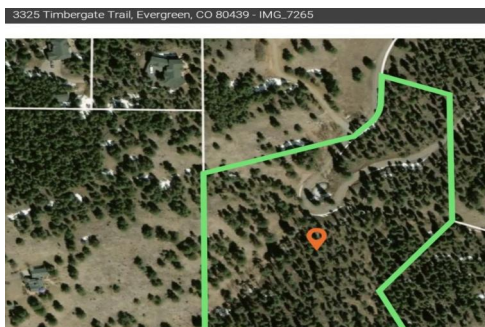
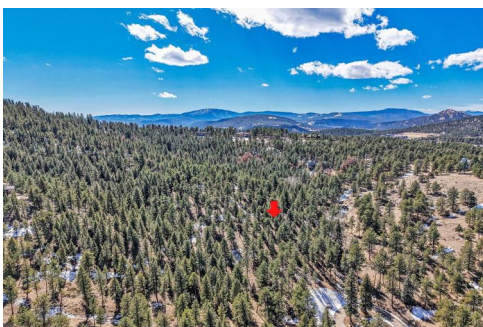
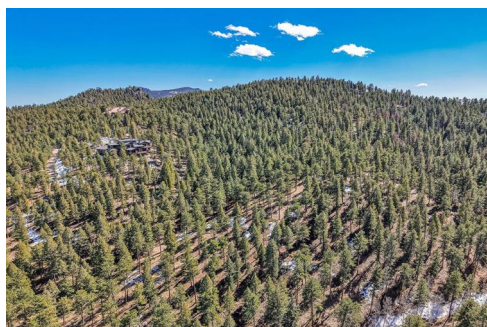
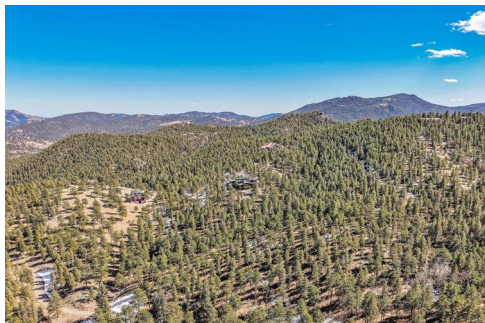




3325 Timbergate Trail  
Evergreen, CO 80439



Vacant Land



10.5 Acre

## PROPERTY DETAILS

Build your dream mountain home on a 10+ acre private retreat in central Evergreen! This parcel offers stunning mountain views, abundant trees, and hiking on your own land. Located in a friendly 6-parcel community, enjoy easy access with paved roads, a seasonal stream, pond, and covered bridge entrance. With rock outcroppings and diverse trees, this is a prime building site. Zoned A-2, the well-managed HOA handles road maintenance and snow removal. Power, natural gas, and high-speed internet options are available. Just 5 minutes from shopping and dining, and 25 minutes to Denver, this is the perfect blend of mountain living and convenience. Contact us for a private tour and guidance on builders and financing. Don't miss this rare opportunity!



**K.C. Golfopoulos**

720-750-2269

[mountainrealtykc@gmail.com](mailto:mountainrealtykc@gmail.com)

<https://mountainrealtycolorado.com/>



Scan code  
for more  
property  
details

