

 Single Family  974 SQFT

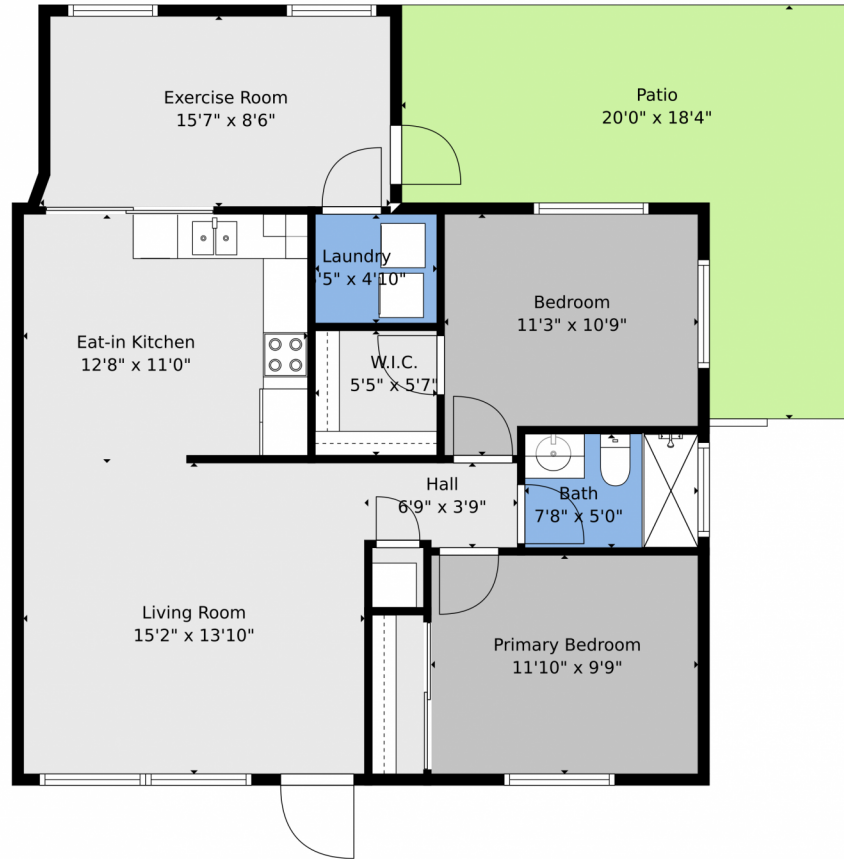
PROPERTY DETAILS

Charming & Move-In Ready 2-Bedroom Home! Step into this beautifully maintained home, where comfort & modern updates come together seamlessly! The air conditioning is only 7 years old, with a tankless water heater—installed less than 2 years ago. The original concrete roof is in excellent condition & was recently sealed for added durability. Newly updated electrical panel, featuring brand-new breaker boxes inside & out, new breakers, & increased amperage to support all your modern needs. The kitchen boasts brand-new appliances, making cooking and entertaining a delight. Plus, this home includes a washer & dryer for added convenience. With all these upgrades already in place, this move-in-ready home is the perfect place to start your next chapter. Don't miss out—schedule your showing today!



Kenny Silverman
954-551-9099
kenny@silvermanfirst.com
<https://www.silvermanfirst.com/>





TOTAL: 881 sq. ft
FLOOR 1: 881 sq. ft
EXCLUDED AREAS: PATIO: 237 sq. ft

Floor Plan Created By V1photos.com, Measurements Deamed Highly Reliable But Not Guaranteed.



Disclaimer: Sizes and Dimensions are Approximate, Actual May Vary.



Kenny Silverman
954-551-9099
kenny@silvermanfirst.com
<https://www.silvermanfirst.com/>

