




1856 Kalel Lane  
Louisville, CO 80027  
COMMUNITY: Steel Ranch

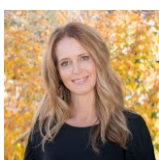
PRICE \$759,900



 Townhouse  2385 SQFT  2 Beds  2/1 Baths  2 Car  0.03 Acre

## PROPERTY DETAILS

Discover the best location in Steele Ranch with breathtaking mountain views from the kitchen and upstairs. This former Boulder Creek model home features custom railings, whole-house speakers, and upgraded window coverings. Enter through beautiful slate tile and enjoy soaring ceilings and abundant light. The open floor plan includes a family room and a spacious dining area, ideal for entertaining. The stunning kitchen boasts a large center island, quartz counters, and a walk-in pantry. Upstairs, find a large primary suite with vaulted ceilings, an attached bath, and a second bedroom with views. An open loft offers flexible space, and laundry is conveniently located upstairs. The home includes a 2-car garage and a mudroom. Enjoy nearby walking/biking trails that lead to restaurants, Waneka Lake, and Downtown Louisville.



Terri Ellerington

303-929-8116

terri@elevated-team.com

<https://www.remax.com/real-estate-agents/terri-ellerington-louisville-co/10205130>

Scan code  
for more  
property  
details

