

Rare End-Unit Townhouse in Skyline Estates – Move-In Ready!



 Townhouse  1720 SQFT  3 Beds  3 Baths  1 Car

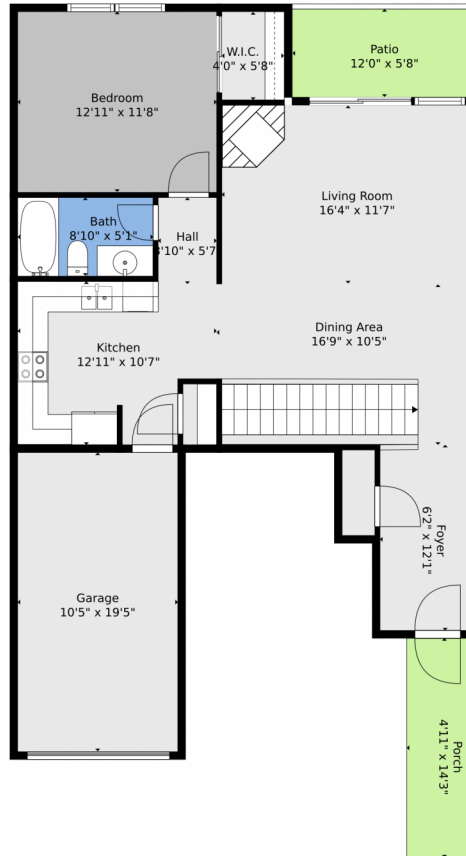
PROPERTY DETAILS

Don't miss this rare chance to own an end-unit townhouse in Skyline Estates! This 1,720 sq ft home features 3 bedrooms and 3 bathrooms, with updates including new LVP flooring, carpet, paint, and a water heater. The main level has a bright layout with a living room, kitchen, dining area, bedroom, and full bath—ideal for guests or a home office. An attached 1-car garage offers convenient parking. Downstairs, you'll find a laundry room, a second bedroom with an ensuite bath, and the primary suite with a walk-in closet and a balcony with foothill views. Enjoy easy access to Stenger Sports Complex, Red Rocks Community College, and the Arvada Ridge Light Rail Station. This move-in-ready home combines space, location, and modern updates—schedule your showing today!



Annie Collins
612-743-0875
anniecollins@kw.com





TOTAL: 1590 sq. ft
BELOW GROUND: 741 sq. ft, FLOOR 2: 849 sq. ft
EXCLUDED AREAS: PATIO: 138 sq. ft, GARAGE: 202 sq. ft, PORCH: 70 sq. ft
Floor Plan Created By V1photos.com, Measurements Deamed Highly Reliable But Not Guaranteed.



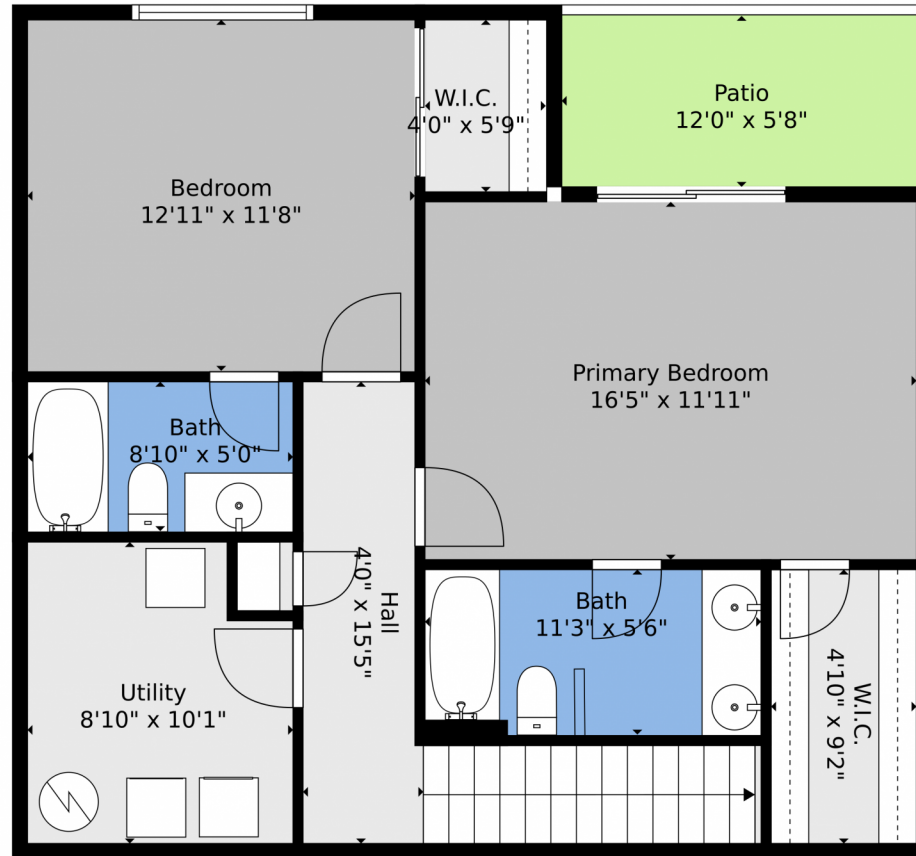
Disclaimer: Sizes and Dimensions are Approximate, Actual May Vary.



Annie Collins
612-743-0875
anniecollins@kw.com



10149 West 55th Drive, Arvada, CO 80002 – Lower Level



TOTAL: 1590 sq. ft
BELOW GROUND: 741 sq. ft, FLOOR 2: 849 sq. ft
EXCLUDED AREAS: PATIO: 138 sq. ft, GARAGE: 202 sq. ft, PORCH: 70 sq. ft
Floor Plan Created By V1photos.com, Measurements Deamed Highly Reliable But Not Guaranteed.



Disclaimer: Sizes and Dimensions are Approximate, Actual May Vary.



Annie Collins
612-743-0875
anniecollins@kw.com

