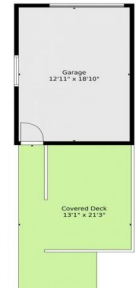





Detached Garage



 Single Family

 1076 SQFT

 3 Beds

 1 Baths



Taylor Haas
303-665-7368
taylorh@coloradorpm.com
<https://www.coloradorpm.com/available-rental-properties-denver>





TOTAL: 957 sq. ft
BELOW GROUND: 0 sq. ft, FLOOR 2: 957 sq. ft
EXCLUDED AREAS: GARAGE: 244 sq. ft, COVERED DECK: 248 sq. ft, PORCH: 136 sq. ft
Floor Plan Created By V1photos.com, Measurements Deamed Highly Reliable But Not Guaranteed.



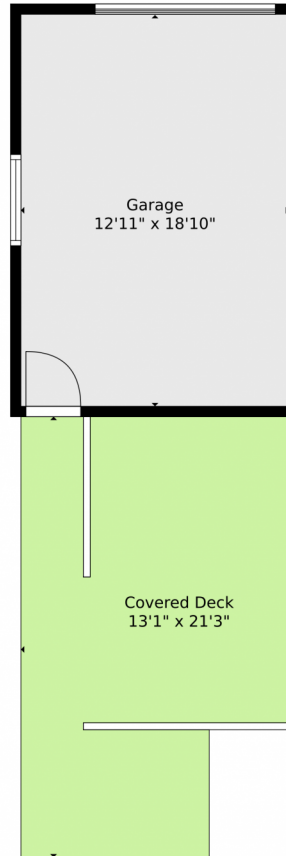
Disclaimer: Sizes and Dimensions are Approximate, Actual May Vary.



Taylor Haas
303-665-7368
taylorh@coloradorpm.com
<https://www.coloradorpm.com/available-rental-properties-denver>



2060 Oneida Street, Denver, CO 80207 – Detached Garage



TOTAL: 957 sq. ft
BELOW GROUND: 0 sq. ft, FLOOR 2: 957 sq. ft
EXCLUDED AREAS: GARAGE: 244 sq. ft, COVERED DECK: 248 sq. ft, PORCH: 136 sq. ft

Floor Plan Created By V1photos.com, Measurements Deamed Highly Reliable But Not Guaranteed.



Disclaimer: Sizes and Dimensions are Approximate, Actual May Vary.



Taylor Haas

303-665-7368

taylorh@coloradorpm.com

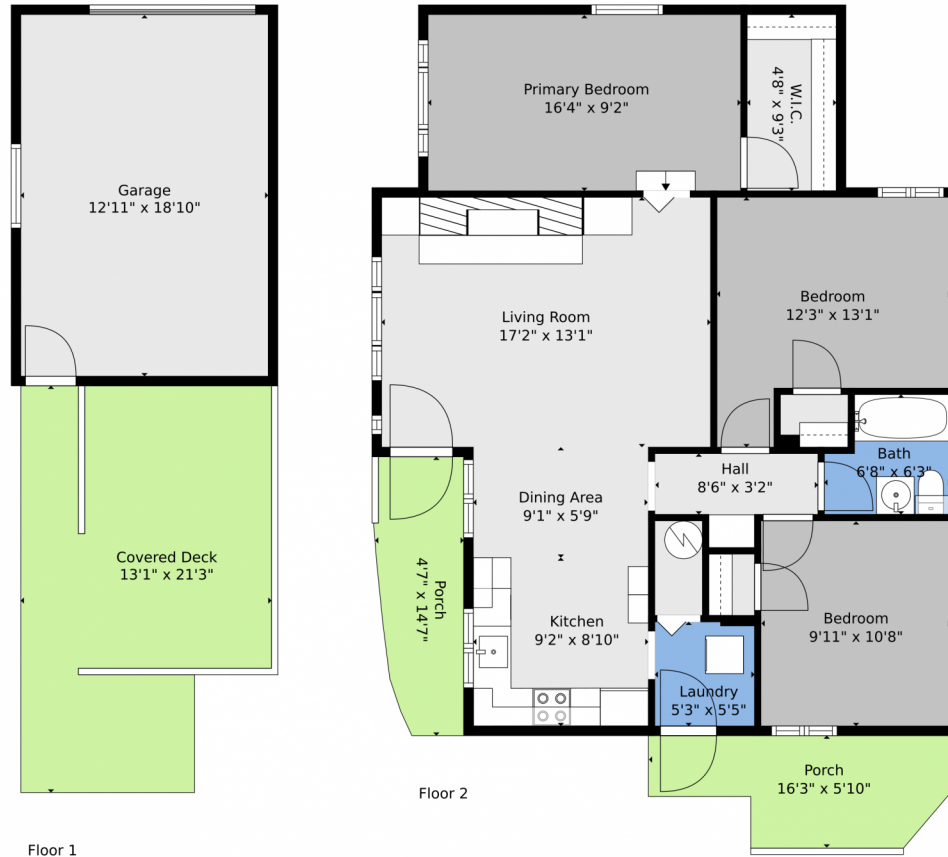
<https://www.coloradorpm.com/available-rental-properties-denver>



Scan code
for more
property
details



2060 Oneida Street, Denver, CO 80207 – All Levels



TOTAL: 957 sq. ft.
BELOW GROUND: 0 sq. ft., FLOOR 2: 957 sq. ft.
EXCLUDED AREAS: GARAGE: 244 sq. ft., COVERED DECK: 248 sq. ft., PORCH: 136 sq. ft.

Floor Plan Created By V1photos.com, Measurements Deamed Highly Reliable But Not Guaranteed.



Disclaimer: Sizes and Dimensions are Approximate, Actual May Vary.



Taylor Haas

303-665-7368

taylorh@coloradorpm.com

<https://www.coloradorpm.com/available-rental-properties-denver>



Scan code
for more
property
details

