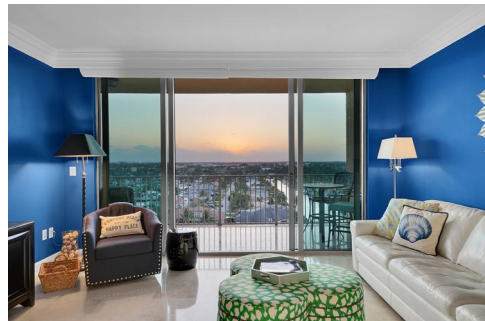


JUST REDUCED AGAIN! On INTRACOASTAL Also w/OCEAN VIEWS! NEW HVAC
10/25!



Condominium



1995 SQFT



2 Beds



2/1 Baths

PROPERTY DETAILS

JUST REDUCED AGAIN! MOTIVATED! SELLER FINANCING! NEW HVAC OCT 2025! Private Elevator opens to your EXCLUSIVE FOYER, BREATHTAKING, Panoramic Views of the OCEAN & on the INTRACOASTAL await. OVERSIZED TERRACE offers Unrivaled Front-Row Seat to watch Yachts Sail along the sparkling water. Live a Life of Unparalleled Elegance just 1 block from the Beach! Soaring ceilings, Gourmet Chef's Kitchen, Spa-Inspired Bathrooms, Motorized Blinds in each room w/Black-Out Blinds in 2 rooms & 3 Walk-In Closets Elevate this Residence to Extraordinary Heights. Immerse Yourself in WATERFRONT LIVING w/Pool, state-of-the-art Fitness Center, Social Room & Deepwater Dock. Indulge in the Epitome of Luxury Living with this SPECTACULAR PENTHOUSE in Pompano Beach. You'll Love Where You Live, Work & Play. Welcome Home!



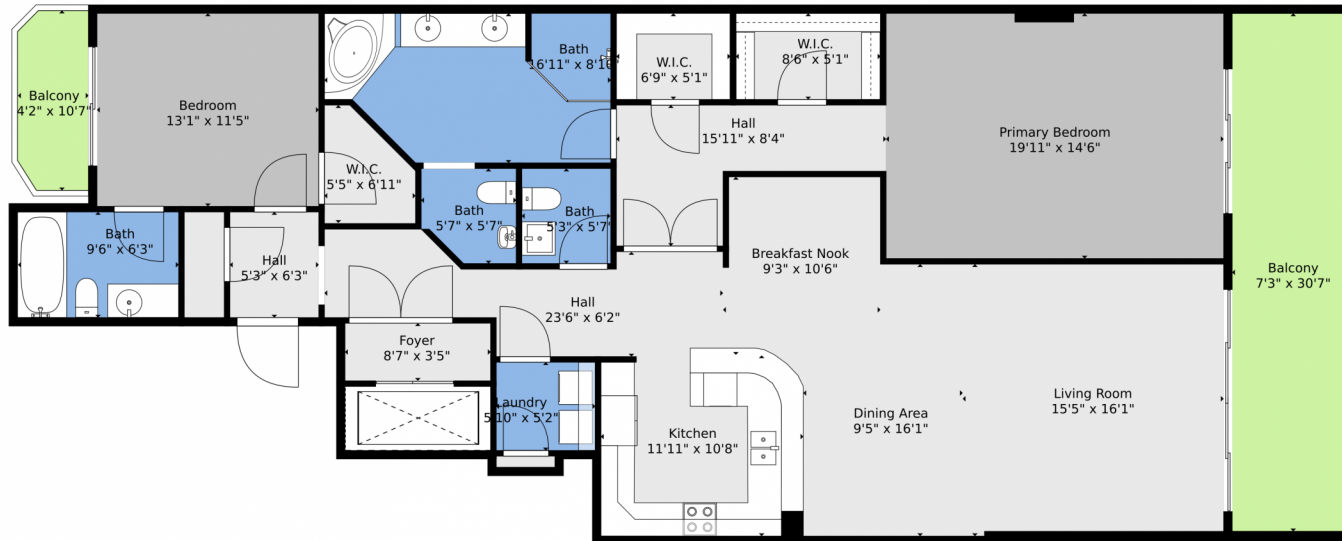
Kevin O'Neil
954-857-3119
kevinoneilrealtor@gmail.com
<https://www.kevin-oneil.com>



Scan code
for more
property
details



821 North Riverside Drive, Pompano Beach, FL 33062 — Main Level



TOTAL: 1817 sq. ft
FLOOR 1: 1817 sq. ft
EXCLUDED AREAS: BALCONY: 263 sq. ft

Floor Plan Created By V1photos.com, Measurements Deamed Highly Reliable But Not Guaranteed.



Disclaimer: Sizes and Dimensions are Approximate, Actual May Vary.



Kevin O'Neil
954-857-3119
kevinoneilrealtor@gmail.com
<https://www.kevin-oneil.com>



Scan code
for more
property
details

