



Single Family



3243 SQFT



5 Beds



4/1 Baths



3 Car



0.19 Acre

PROPERTY DETAILS

Welcome to your dream home in Inspiration, set on a private lot backing to open space and a scenic walking trail. This stunning two-story home features 5 spacious bedrooms and 4.5 baths, including a main-floor bedroom with an ensuite bath and a dedicated office. The main level boasts beautiful hardwood floors and a gourmet kitchen with a large island, stainless steel appliances, and a butler's pantry. Enjoy breathtaking views from the great room and breakfast nook, which leads to a back deck ideal for entertaining. The luxurious primary suite offers soaring ceilings and a 5-piece bath. The backyard features a deck, fire pit, and hot tub. The unique three-car garage includes extra storage. Located in the desirable Inspiration community with amenities like a pool, dog park, and trails, this home has it all!

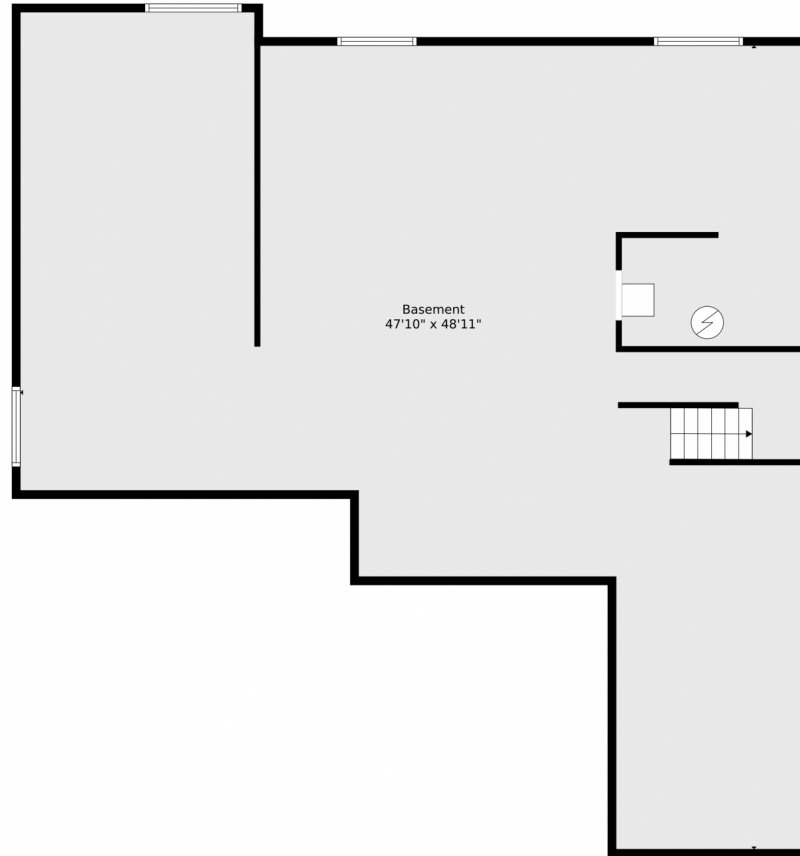


Jodi Rae Randa
720-244-1796
jodi@jodiranda.com
<https://JodiRanda.com>



Scan code
for more
property
details





Basement
47'10" x 48'11"

TOTAL: 3132 sq. ft
BELOW GROUND: 0 sq. ft, FLOOR 2: 1689 sq. ft, FLOOR 3: 1443 sq. ft
EXCLUDED AREAS: BASEMENT: 1660 sq. ft, GARAGE: 431 sq. ft, OPEN TO BELOW: 99 sq. ft

Floor Plan Created By V1photos.com, Measurements Deamed Highly Reliable But Not Guaranteed.

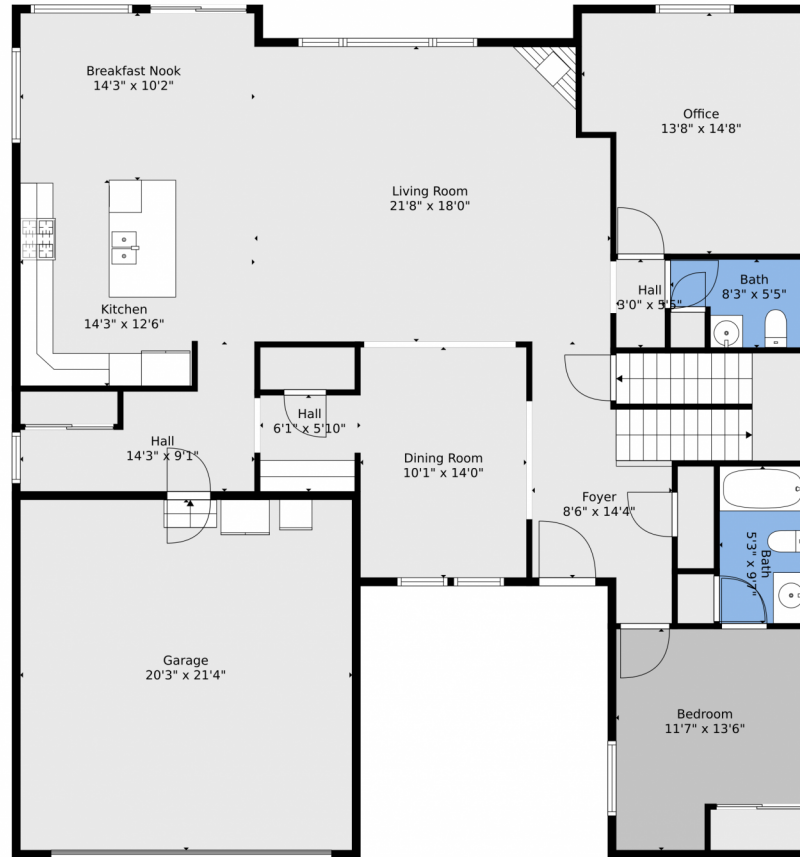


Disclaimer: Sizes and Dimensions are Approximate, Actual May Vary.



Jodi Rae Randa
720-244-1796
jodi@jodiranda.com
<https://JodiRanda.com>





TOTAL: 3132 sq. ft
BELOW GROUND: 0 sq. ft, FLOOR 2: 1689 sq. ft, FLOOR 3: 1443 sq. ft
EXCLUDED AREAS: BASEMENT: 1660 sq. ft, GARAGE: 431 sq. ft, OPEN TO BELOW: 99 sq. ft

Floor Plan Created By V1photos.com, Measurements Deamed Highly Reliable But Not Guaranteed.



Disclaimer: Sizes and Dimensions are Approximate, Actual May Vary.



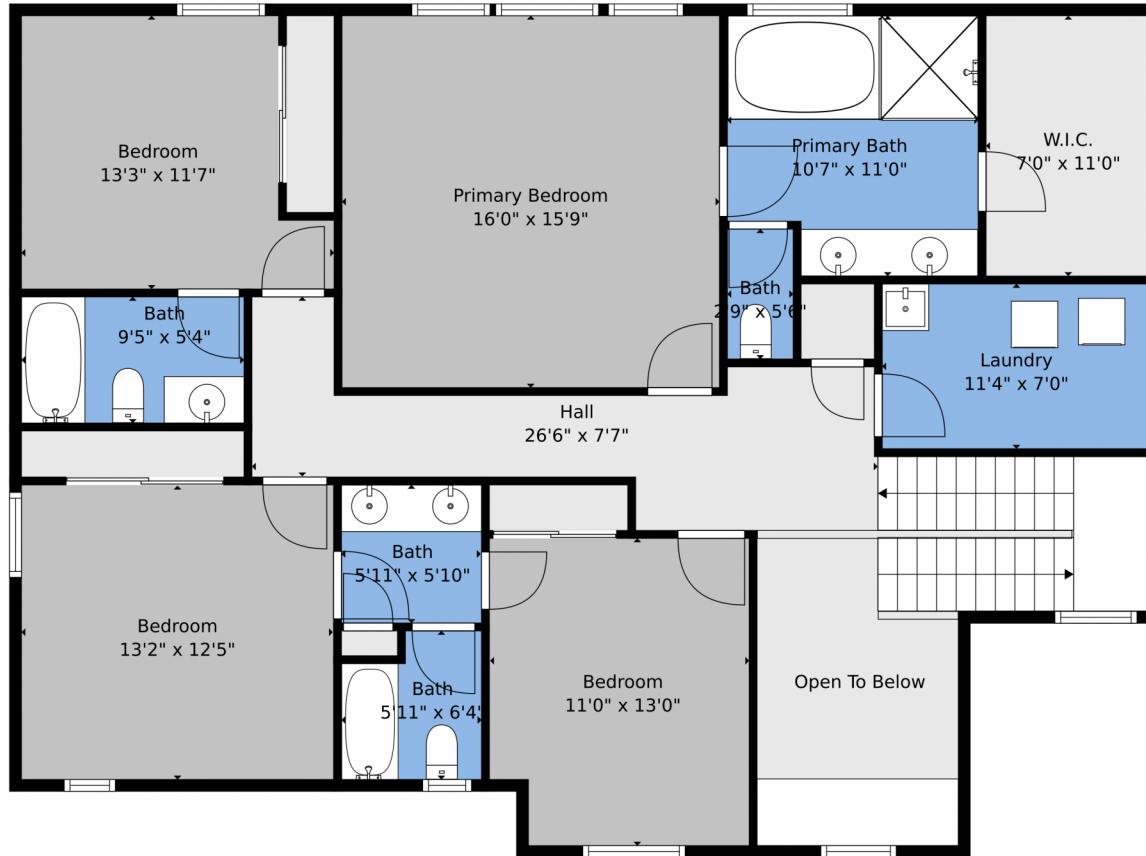
Jodi Rae Randa
720-244-1796
jodi@jodiranda.com
<https://JodiRanda.com>



Scan code
for more
property
details



23593 East Eads Drive, Aurora, CO 80016 – 2nd Level



TOTAL: 3132 sq. ft
BELOW GROUND: 0 sq. ft, FLOOR 2: 1689 sq. ft, FLOOR 3: 1443 sq. ft
EXCLUDED AREAS: BASEMENT: 1660 sq. ft, GARAGE: 431 sq. ft, OPEN TO BELOW: 99 sq. ft
Floor Plan Created By V1photos.com, Measurements Deamed Highly Reliable But Not Guaranteed.



Disclaimer: Sizes and Dimensions are Approximate, Actual May Vary.



Jodi Rae Randa
720-244-1796
jodi@jodiranda.com
<https://JodiRanda.com>



Scan code
for more
property
details



23593 East Eads Drive, Aurora, CO 80016 – All Levels



TOTAL: 3132 sq. ft
BELOW GROUND: 0 sq. ft, FLOOR 2: 1689 sq. ft, FLOOR 3: 1443 sq. ft
EXCLUDED AREAS: BASEMENT: 1660 sq. ft, GARAGE: 431 sq. ft, OPEN TO BELOW: 99 sq. ft

Floor Plan Created By V1photos.com, Measurements Deamed Highly Reliable But Not Guaranteed.



Disclaimer: Sizes and Dimensions are Approximate, Actual May Vary.



Jodi Rae Randa
720-244-1796
jodi@jodiranda.com
<https://JodiRanda.com>



Scan code
for more
property
details