



130 Skyview Court
 Louisville, CO 80027
 COMMUNITY: Centennial Heights

PRICE
 \$1,050,000

Location, Location, Location on Quite Cul-de-sac!



Single Family



2975 SQFT



4 Beds



2/1 Baths



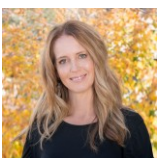
2 Car



0.17 Acre

PROPERTY DETAILS

Opportunity awaits in Centennial Heights, steps from Fireside, trails, and the Louisville Rec. This two-story home on a quiet cul-de-sac features vaulted ceilings and radiant floor heating in the entrance and kitchen. Enjoy natural wool carpet on the staircase and non-toxic hardwood finishes. The cozy living room has a bay window, while the dining room overlooks the yard. The chef's kitchen boasts granite counters, new stainless steel appliances, and opens to a large outdoor space ideal for entertaining. The family room features a gas fireplace. Upstairs, the primary suite includes vaulted ceilings, a luxury 5-piece bath, and three additional bedrooms. An unfinished basement offers storage or expansion potential. The expansive deck and large yard with mature trees complete this inviting home, conveniently located near amenities and Downtown Louisville.



Terri Ellerington

303-929-8116

terri@elevated-team.com

<https://www.remax.com/real-estate-agents/terri-ellerington-louisville-co/10205130>

Scan code
 for more
 property
 details



130 Skyview Court, Louisville, CO 80027 – All Levels



TOTAL: 1850 sq. ft
BELOW GROUND: 0 sq. ft, FLOOR 2: 953 sq. ft, FLOOR 3: 897 sq. ft
EXCLUDED AREAS: BASEMENT: 884 sq. ft, PORCH: 54 sq. ft, DECK: 336 sq. ft,
PATIO: 73 sq. ft, GARAGE: 413 sq. ft, FIREPLACE: 8 sq. ft,
OPEN TO BELOW: 79 sq. ft

Floor Plan Created By V1photos.com, Measurements Deamed Highly Reliable But Not Guaranteed.



Disclaimer: Sizes and Dimensions are Approximate, Actual May Vary.



Terri Ellerington

303-929-8116

terri@elevated-team.com

<https://www.remax.com/real-estate-agents/terri-ellerington-louisville-co/102051301>



Scan code
for more
property
details

