


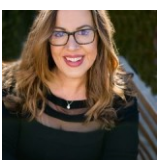
Stunning 2 Bed, 2 Bath Retreat in Rocksbury Ridge with Breathtaking Mountain Views



 Single Family  1406 SQFT  2 Beds  2 Baths  3 Car  0.15 Acre

PROPERTY DETAILS

Discover your dream home in the heart of Rocksbury Ridge! Want mountain views? This is the home for you! Located in Johnstown, this charming 2-bedroom, 2-bath gem is packed with features to adore. Step inside to find new windows flooding the space with light, complemented by sleek pullout cabinets and pantry shelves for effortless organization. Entertaining? You will love all the counter space and cabinets, island seating, plus room for a breakfast table and a dining room too! The kitchen leads out to the backyard with a large concrete patio. Imagine this - summers spent grilling and unwinding on your patio - with the Rockies in the background. The split rail fence has been upgraded with extra outlets for festive lights or outdoor fun. The backyard feels larger and it opens directly to open space, and a quick stroll leads you to Johnstown Reservoir—trails, fishing,



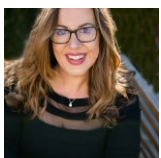
Suzana Sweney
970-820-0222
ssweney@kw.com



and nature, are practically at your doorstep! The full unfinished basement is a blank canvas—think extra bedrooms, a home gym, a cozy rec room, or simply ample storage. Then there is the 3-car garage which is ready for your vehicles, motorcycles, or weekend projects.

Need convenience? The new Ledge Rock Shopping Center has Murdoch's, Woods Grocery Store and more, plus Buc-ee's is a hop across the interstate. With I-25 just a mile away, commuting is a snap!

Looking for affordability? There is no burdensome Metro Tax, and the HOA fees? Totally reasonable. Surrounded by parks, trails, and fishing spots, this home is a rare find. Rocksbury Ridge is calling—come see why this is the place to live your best life. Don't wait!



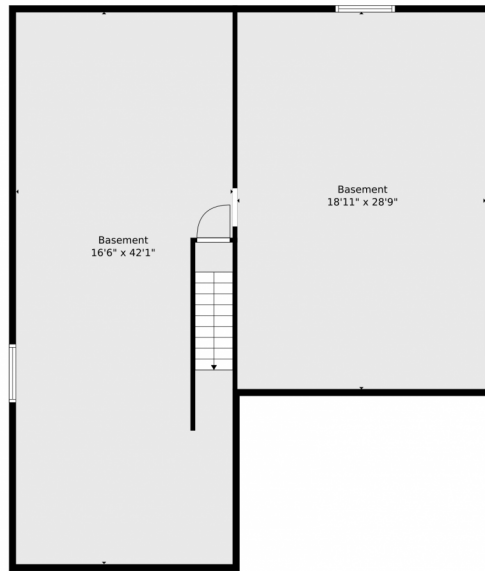
Suzana Sweney
970-820-0222
ssweney@kw.com



Scan code
for more
property
details



4112 Flagstone, Johnstown, CO 80534 – All Levels



Floor 1



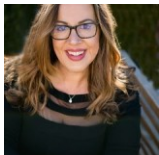
Floor 2

TOTAL: 1330 sq. ft
BELOW GROUND: 0 sq. ft, FLOOR 2: 1330 sq. ft
EXCLUDED AREAS: BASEMENT: 1250 sq. ft, GARAGE: 607 sq. ft, PORCH: 117 sq. ft,
PATIO: 758 sq. ft

Floor Plan Created By V1photos.com, Measurements Deamed Highly Reliable But Not Guaranteed.



Disclaimer: Sizes and Dimensions are Approximate, Actual May Vary.



Suzana Sweney
970-820-0222
ssweney@kw.com

