



2208 South Tucson Way
 Aurora, CO 80014
 COMMUNITY: Willowridge

MLS # 5840993



Single Family 2364 SQFT 2 Beds 2/1 Baths 2 Car

PROPERTY DETAILS

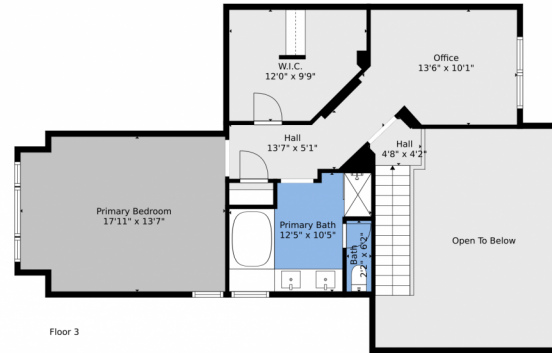
Welcome home to Brookside at Willowridge! This duplex-style unit set in a park-like setting with community pool, tennis courts and clubhouse. Home features 2364 sq ft of living space on three levels. The main level features a 2nd bedroom with a 3/4 upgraded bath with electronic bidet, living room with fireplace that leads out to private partially fenced patio, dining room, laundry room and a spacious kitchen with granite countertops, island, double oven range smart refrigerator and lots of cabinet space. The upper level is a primary suite dream, with a huge primary bedroom with plenty of natural sunlight, ensuite with shower, garden tub and double sink, walk-in closet the size of a room and a bonus room perfect for office, nursery or 3rd non-conforming bedroom. The basement is finished with new carpet, media/family room, half bath, storage and a crawl space. Don't forget the two-car attached garage with new garage door! You are going to love living here! Move-in ready with quick possession.



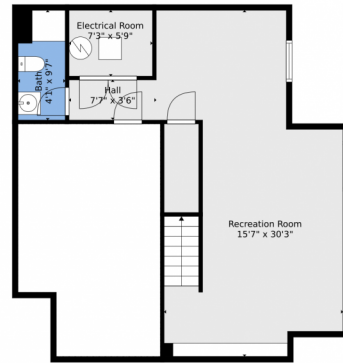
Cheryl L McCleerey
 303-519-0300
 tcmcleerey@msn.com



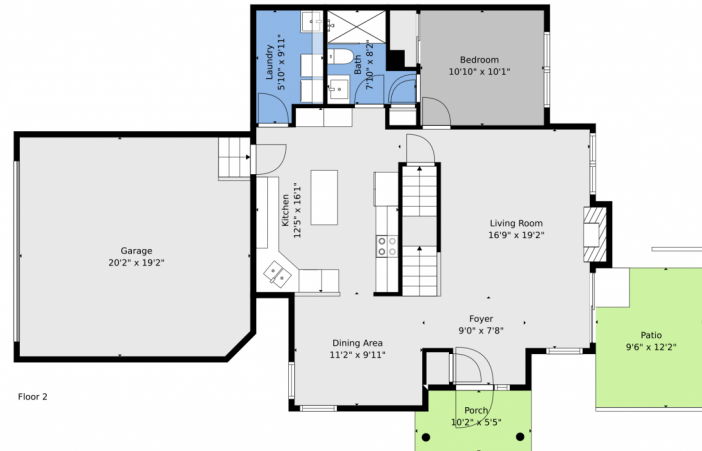
2208 South Tucson Way, Aurora, CO 80014 – All Levels



Floor 3



Floor 1



Floor 2

TOTAL: 2104 sq. ft
 BELOW GROUND: 477 sq. ft, FLOOR 2: 891 sq. ft, FLOOR 3: 736 sq. ft
 EXCLUDED AREAS: LOW CEILING: 237 sq. ft, ELECTRICAL ROOM: 42 sq. ft, UNDEFINED: 23 sq. ft,
 GARAGE: 384 sq. ft, PORCH: 53 sq. ft, PATIO: 116 sq. ft,
 FIREPLACE: 8 sq. ft, OPEN TO BELOW: 261 sq. ft

Floor Plan Created By V1photos.com, Measurements Deamed Highly Reliable But Not Guaranteed.



Disclaimer: Sizes and Dimensions are Approximate, Actual May Vary.



Cheryl L McCleerey
 303-519-0300
 tcmcleerey@msn.com

