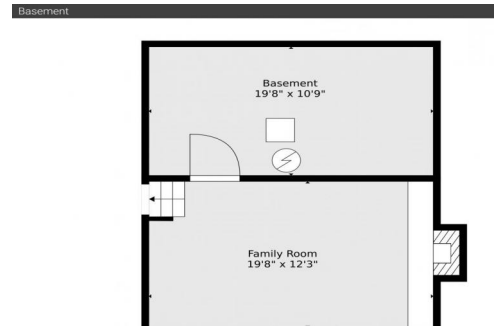


218 Pikes Peak Place
Longmont, CO 80504
COMMUNITY: Hilltop Village

MLS # 1541843
PRICE \$550,000

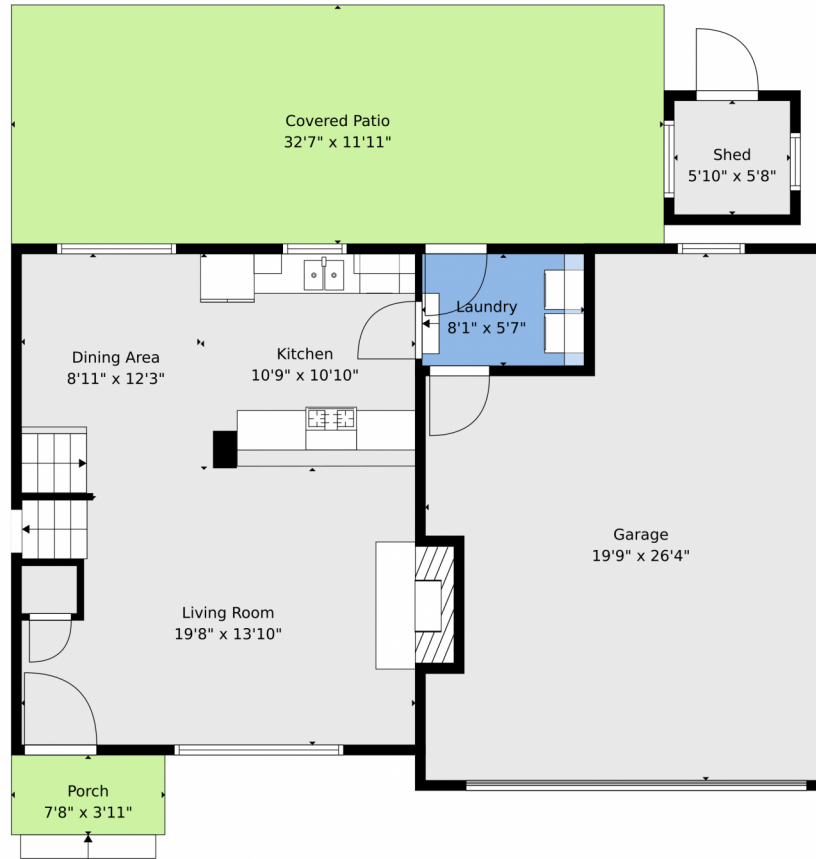


 Single Family  1918 SQFT  4 Beds  2 Baths  2 Car  0.16 Acre

Diana Dresser
720-841-1798
diana@rosenhagenrealestate.com



218 Pikes Peak Place, Longmont, CO 80504 – Main



TOTAL: 1670 sq. ft
BELOW GROUND: 254 sq. ft, FLOOR 2: 447 sq. ft, FLOOR 3: 534 sq. ft, FLOOR 4: 435 sq. ft
EXCLUDED AREAS: BASEMENT: 212 sq. ft, FIREPLACE: 22 sq. ft, GARAGE: 455 sq. ft,
SHED: 33 sq. ft, PORCH: 31 sq. ft, COVERED PATIO: 389 sq. ft

Floor Plan Created By V1photos.com, Measurements Deamed Highly Reliable But Not Guaranteed.

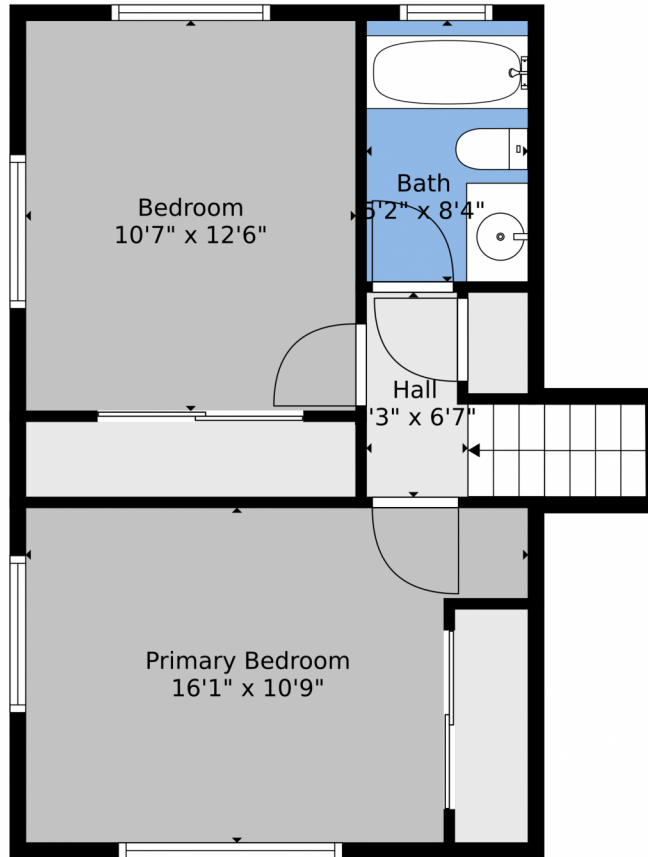


Disclaimer: Sizes and Dimensions are Approximate, Actual May Vary.

Diana Dresser
720-841-1798
diana@rosenhagenrealestate.com



218 Pikes Peak Place, Longmont, CO 80504 – 2nd Level



TOTAL: 1670 sq. ft
BELOW GROUND: 254 sq. ft, FLOOR 2: 447 sq. ft, FLOOR 3: 534 sq. ft, FLOOR 4: 435 sq. ft
EXCLUDED AREAS: BASEMENT: 212 sq. ft, FIREPLACE: 22 sq. ft, GARAGE: 455 sq. ft,
SHED: 33 sq. ft, PORCH: 31 sq. ft, COVERED PATIO: 389 sq. ft

Floor Plan Created By V1photos.com, Measurements Deamed Highly Reliable But Not Guaranteed.

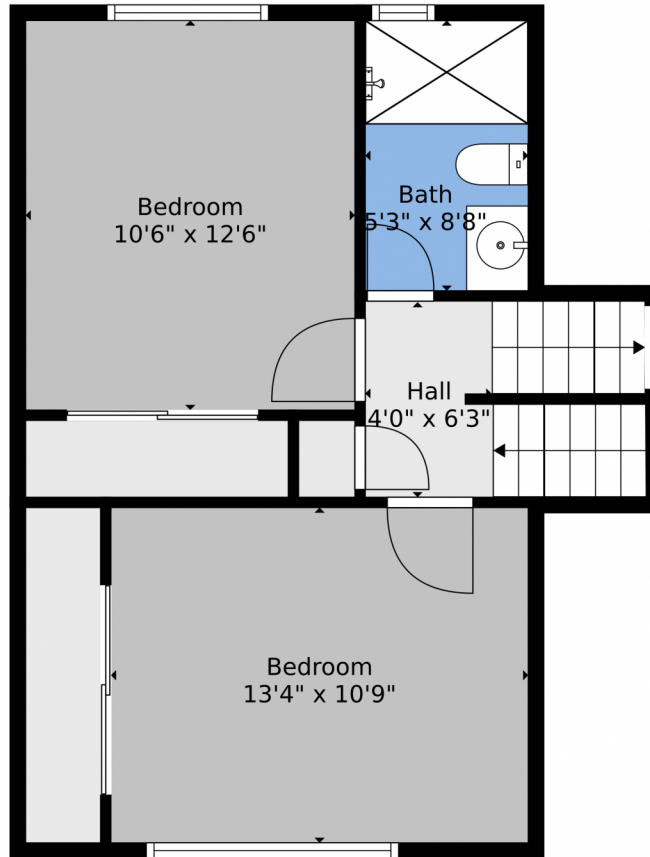


Disclaimer: Sizes and Dimensions are Approximate, Actual May Vary.

Diana Dresser
720-841-1798
diana@rosenhagenrealestate.com



218 Pikes Peak Place, Longmont, CO 80504 – Lower Level



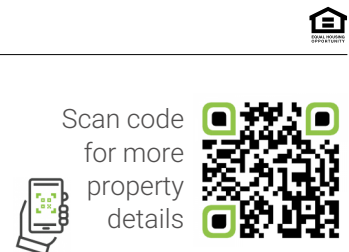
TOTAL: 1670 sq. ft
BELOW GROUND: 254 sq. ft, FLOOR 2: 447 sq. ft, FLOOR 3: 534 sq. ft, FLOOR 4: 435 sq. ft
EXCLUDED AREAS: BASEMENT: 212 sq. ft, FIREPLACE: 22 sq. ft, GARAGE: 455 sq. ft,
SHED: 33 sq. ft, PORCH: 31 sq. ft, COVERED PATIO: 389 sq. ft

Floor Plan Created By V1photos.com, Measurements Deamed Highly Reliable But Not Guaranteed.

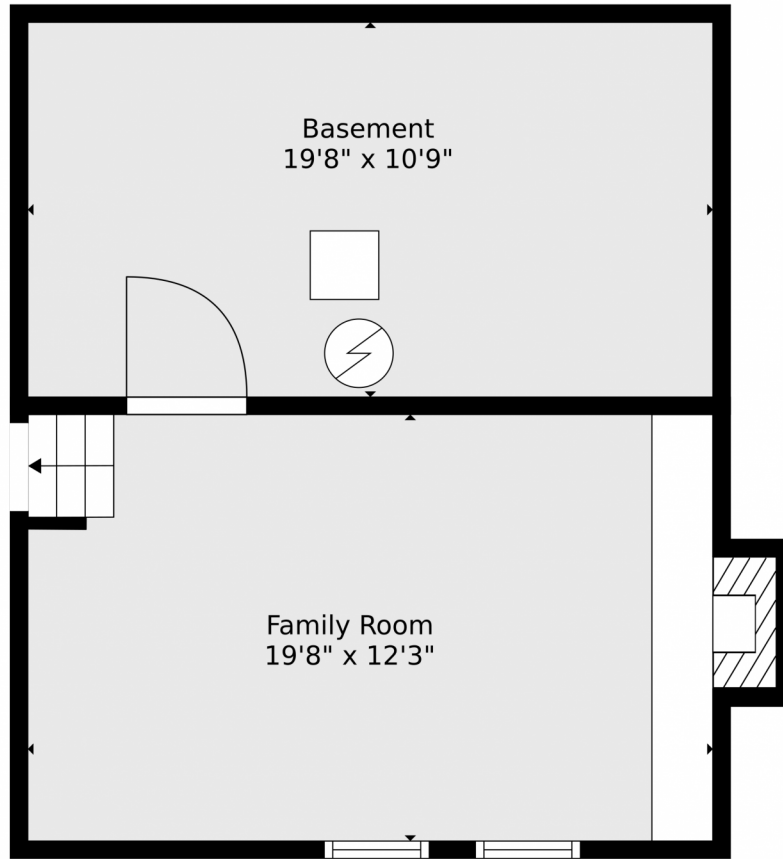


Disclaimer: Sizes and Dimensions are Approximate, Actual May Vary.

Diana Dresser
720-841-1798
diana@rosenhagenrealestate.com



218 Pikes Peak Place, Longmont, CO 80504 – Basement



TOTAL: 1670 sq. ft
BELOW GROUND: 254 sq. ft, FLOOR 2: 447 sq. ft, FLOOR 3: 534 sq. ft, FLOOR 4: 435 sq. ft
EXCLUDED AREAS: BASEMENT: 212 sq. ft, FIREPLACE: 22 sq. ft, GARAGE: 455 sq. ft,
SHED: 33 sq. ft, PORCH: 31 sq. ft, COVERED PATIO: 389 sq. ft

Floor Plan Created By V1photos.com, Measurements Deamed Highly Reliable But Not Guaranteed.

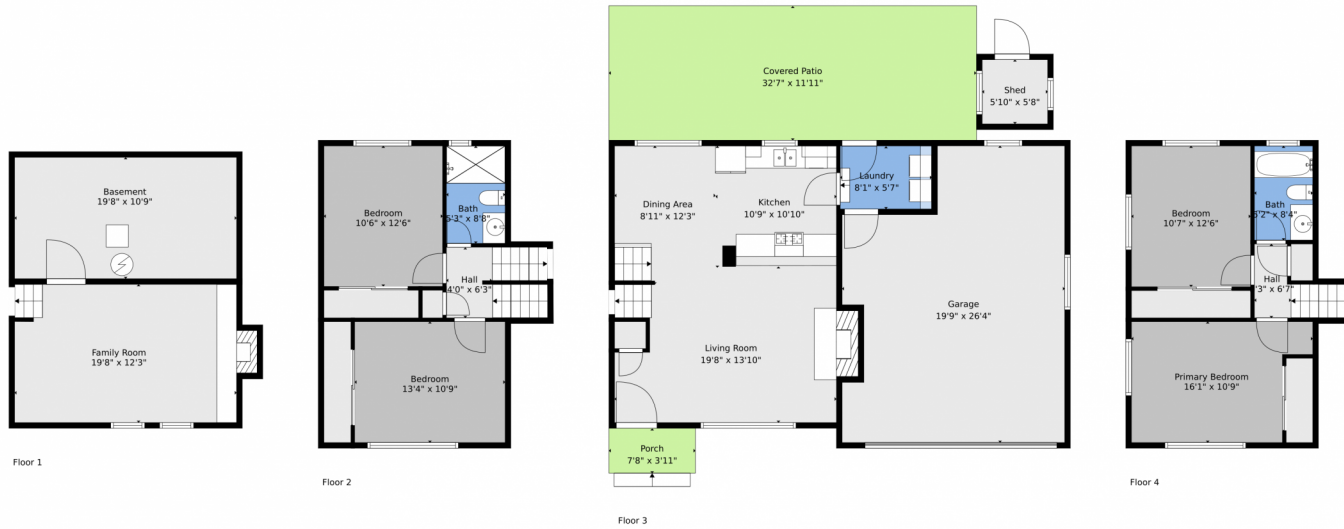


Disclaimer: Sizes and Dimensions are Approximate, Actual May Vary.

Diana Dresser
720-841-1798
diana@rosenhagenrealestate.com



218 Pikes Peak Place, Longmont, CO 80504 – All Levels



TOTAL: 1670 sq. ft
BELOW GROUND: 254 sq. ft, FLOOR 2: 447 sq. ft, FLOOR 3: 534 sq. ft, FLOOR 4: 435 sq. ft
EXCLUDED AREAS: BASEMENT: 212 sq. ft, FIREPLACE: 22 sq. ft, GARAGE: 455 sq. ft,
SHED: 33 sq. ft, PORCH: 31 sq. ft, COVERED PATIO: 389 sq. ft

Floor Plan Created By V1photos.com, Measurements Deamed Highly Reliable But Not Guaranteed.



Disclaimer: Sizes and Dimensions are Approximate, Actual May Vary.

Diana Dresser
720-841-1798
diana@rosenhagenrealestate.com

