



4309 S Coors Court  
Morrison, CO 80465  
COMMUNITY: Friendly Hills

MLS # 3532293  
PRICE \$645,000



Single Family



2076 SQFT



4 Beds



2 Baths



2 Car



0.19 Acre

## PROPERTY DETAILS

TURN KEY, GREAT LOCATION, CORNER LOT, UPDATED!! This bi-level home blends modern comfort with quick access to amenities and the mountains. Just buy and move in! The open-concept design features a bright sunroom with a cozy gas fireplace, perfect for entertaining. With 4 bedrooms and 2 baths, there's plenty of room to personalize. A new concrete patio and xeriscape landscaping keep maintenance low, allowing you more time to enjoy.

Located near Southwest Plaza Mall and various shops and restaurants, this home offers unbeatable access to shopping, dining, and outdoor activities. Enjoy nearby Bear Creek, Soda Lake, Harriman Lake, and Red Rocks Amphitheatre, plus the C-470 bike path for outdoor adventures. Schedule your private showing today—this won't last long!

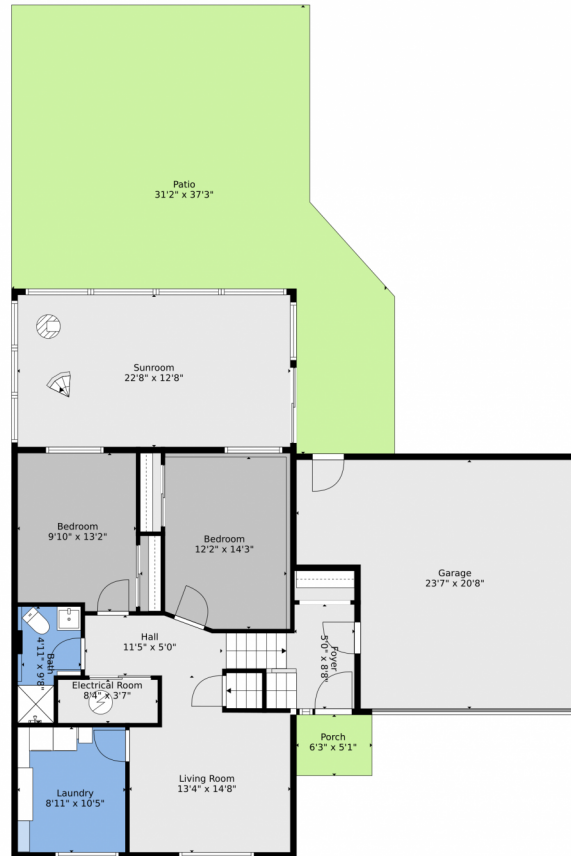
Jessica Ford  
720-840-0655  
mymountainproperties@gmail.com



Scan code  
for more  
property  
details



# 4309 S Coors Court, Morrison, CO 80465 — Main



TOTAL: 1911 sq. ft.  
BELOW GROUND: 1070 sq. ft, FLOOR 2: 841 sq. ft  
EXCLUDED AREAS: ELECTRICAL ROOM: 30 sq. ft, GARAGE: 424 sq. ft, PATIO: 719 sq. ft,  
PORCH: 32 sq. ft, OPEN TO BELOW: 266 sq. ft

Floor Plan Created By V1photos.com, Measurements Deamed Highly Reliable But Not Guaranteed.

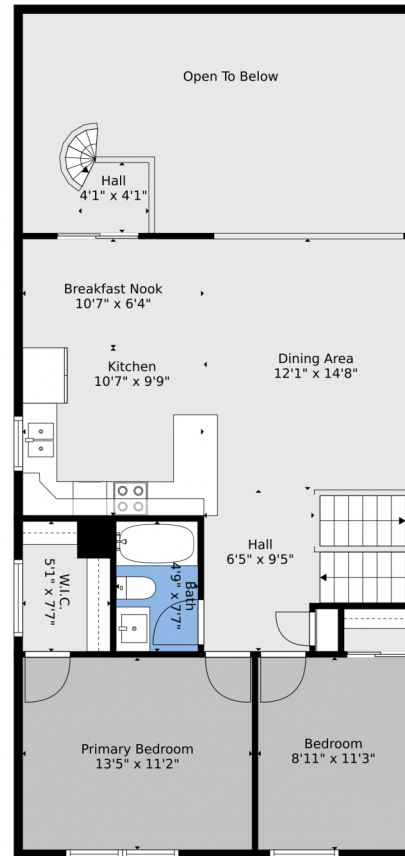


Disclaimer: Sizes and Dimensions are Approximate, Actual May Vary.

Jessica Ford  
720-840-0655  
mymountainproperties@gmail.com



## 4309 S Coors Court, Morrison, CO 80465 — 2nd Level



TOTAL: 1911 sq. ft.  
BELOW GROUND: 1070 sq. ft, FLOOR 2: 841 sq. ft  
EXCLUDED AREAS: ELECTRICAL ROOM: 30 sq. ft, GARAGE: 424 sq. ft, PATIO: 719 sq. ft,  
PORCH: 32 sq. ft, OPEN TO BELOW: 266 sq. ft

Floor Plan Created By V1photos.com, Measurements Deamed Highly Reliable But Not Guaranteed.



Disclaimer: Sizes and Dimensions are Approximate, Actual May Vary.

Jessica Ford  
720-840-0655  
mymountainproperties@gmail.com



# 4309 S Coors Court, Morrison, CO 80465 — All Levels



TOTAL: 1911 sq. ft  
BELOW GROUND: 1070 sq. ft, FLOOR 2: 841 sq. ft  
EXCLUDED AREAS: ELECTRICAL ROOM: 30 sq. ft, GARAGE: 424 sq. ft, PATIO: 719 sq. ft,  
PORCH: 32 sq. ft, OPEN TO BELOW: 266 sq. ft

Floor Plan Created By V1photos.com, Measurements Deamed Highly Reliable But Not Guaranteed.



Disclaimer: Sizes and Dimensions are Approximate, Actual May Vary.

Jessica Ford  
720-840-0655  
mymountainproperties@gmail.com

