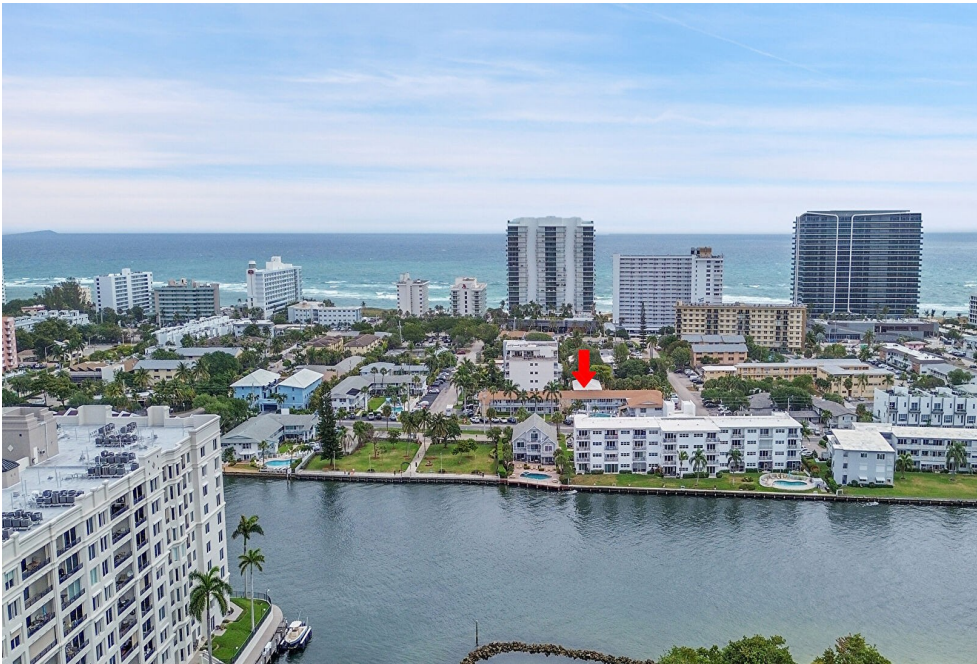


JUST LISTED! UPDATED, FURNISHED, 2nd FLOOR POOLSIDE!



Other



560 SQFT



2 Beds



1 Baths

PROPERTY DETAILS

Updated 2nd Floor POOLSIDE Unit - No One Above You! IMPACT WINDOWS & DOOR with Retractable Screen Door. Being Sold FURNISHED (some exclusions). AMAZING VIEWS of the Pool Directly Below Your unit, also FABULOUS Intracoastal Views, 2 Blocks from the Public Beach, Directly Across from WATER TAXI STOP & Accessible to the CIRCUIT. West Facing Balcony Overlooking Pool you will SEE AMAZING SUNSETS! 1 Assigned Parking & Storage Space & plenty Guest Parking. 18" Tile Floors Throughout, Open Floor Plan, Great for Entertaining. Bathroom with Huge Glass Enclosed Shower. Large Bedroom, Lots of Closets! Community Heated Pool, Cabana, BBQ, 2 Community Laundry Rooms (.50 Cents Ea.), close to Shopping, Golf, Dining, Beach, & much more. You Will LOVE THE LOCATION, Where You Live, Work & Play! Welcome Home!



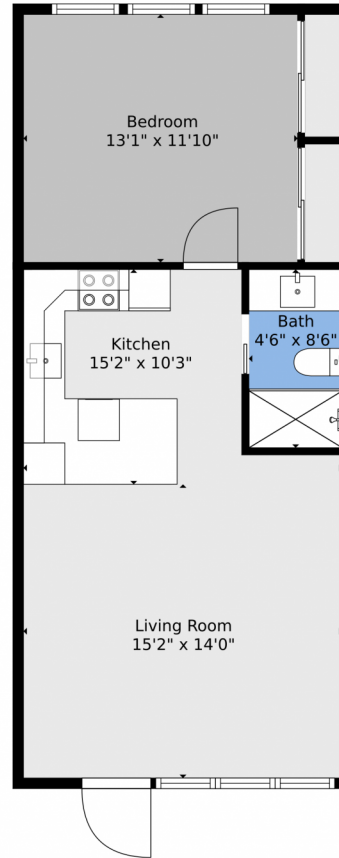
Kevin O'Neil
954-857-3119
kevinoneilrealtor@gmail.com
<https://www.kevin-oneil.com>



Scan code
for more
property
details



1110 North Riverside Drive, Pompano Beach, FL 33062 – Main



TOTAL: 553 sq. ft
FLOOR 1: 553 sq. ft

Floor Plan Created By V1photos.com, Measurements Deamed Highly Reliable But Not Guaranteed.



Disclaimer: Sizes and Dimensions are Approximate, Actual May Vary.



Kevin O'Neil
954-857-3119
kevinoneilrealtor@gmail.com
<https://www.kevin-oneil.com>



Scan code
for more
property
details