

Charming Brick Home with Backyard Oasis!



Single Family



2172 SQFT



3 Beds



1/1 Baths



1 Car



0.17 Acre

PROPERTY DETAILS

Located in the desirable Athmar Park neighborhood, this charming brick home combines classic character with modern updates. The main level is fresh and move-in ready, featuring a spacious living area filled with natural light and a panoramic east-facing window showcasing the Denver skyline. The dining room opens to a back patio, creating a seamless indoor-outdoor flow, perfect for morning coffee or summer gatherings in the lush backyard with mature trees. The basement offers over 600 square feet of potential for a home office, gym, or entertainment space. Enjoy easy access to parks, trails, and shops, along with quick commutes to downtown Denver. Don't miss this opportunity—schedule a showing today!



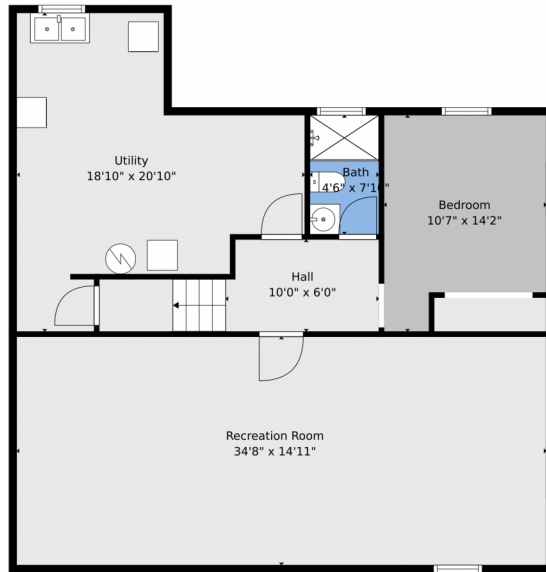
Jake Sklanka
 203-509-6561
 jakesklanka@gmail.com



Scan code
 for more
 property
 details



615 South Shoshone St, Denver, CO 80223 — All Levels



Floor 1



Floor 2

TOTAL: 2172 sq. ft
BELOW GROUND: 1086 sq. ft, FLOOR 2: 1086 sq. ft
EXCLUDED AREAS: GARAGE: 294 sq. ft, PATIO: 242 sq. ft

Floor Plan Created By V1photos.com, Measurements Deamed Highly Reliable But Not Guaranteed.



Disclaimer: Sizes and Dimensions are Approximate, Actual May Vary.



Jake Sklanka
203-509-6561
jakesklanka@gmail.com



Scan code
for more
property
details

