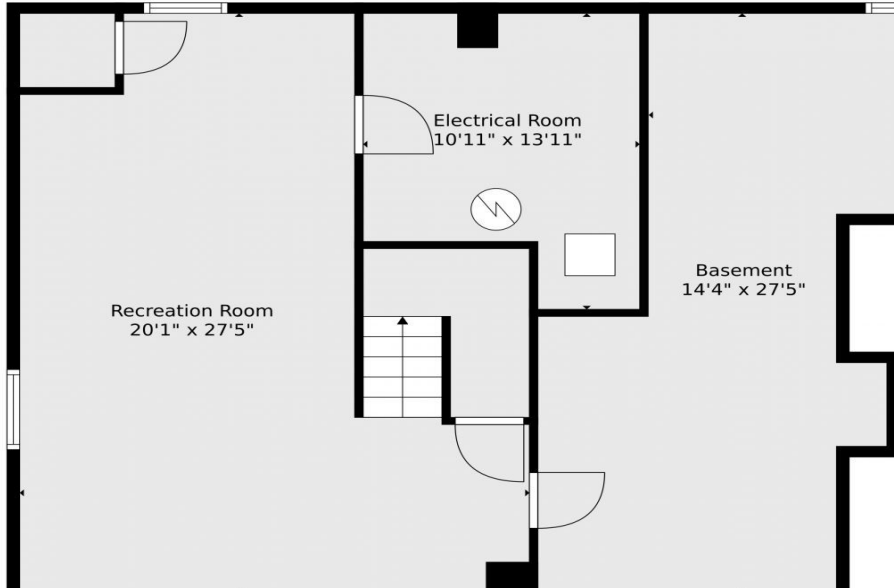




13194 Peacock Drive  
Lone Tree, CO 80124

floorplan\_single\_0



Single Family



3011 SQFT



4 Beds



2/1 Baths



2 Car



0.18 Acre



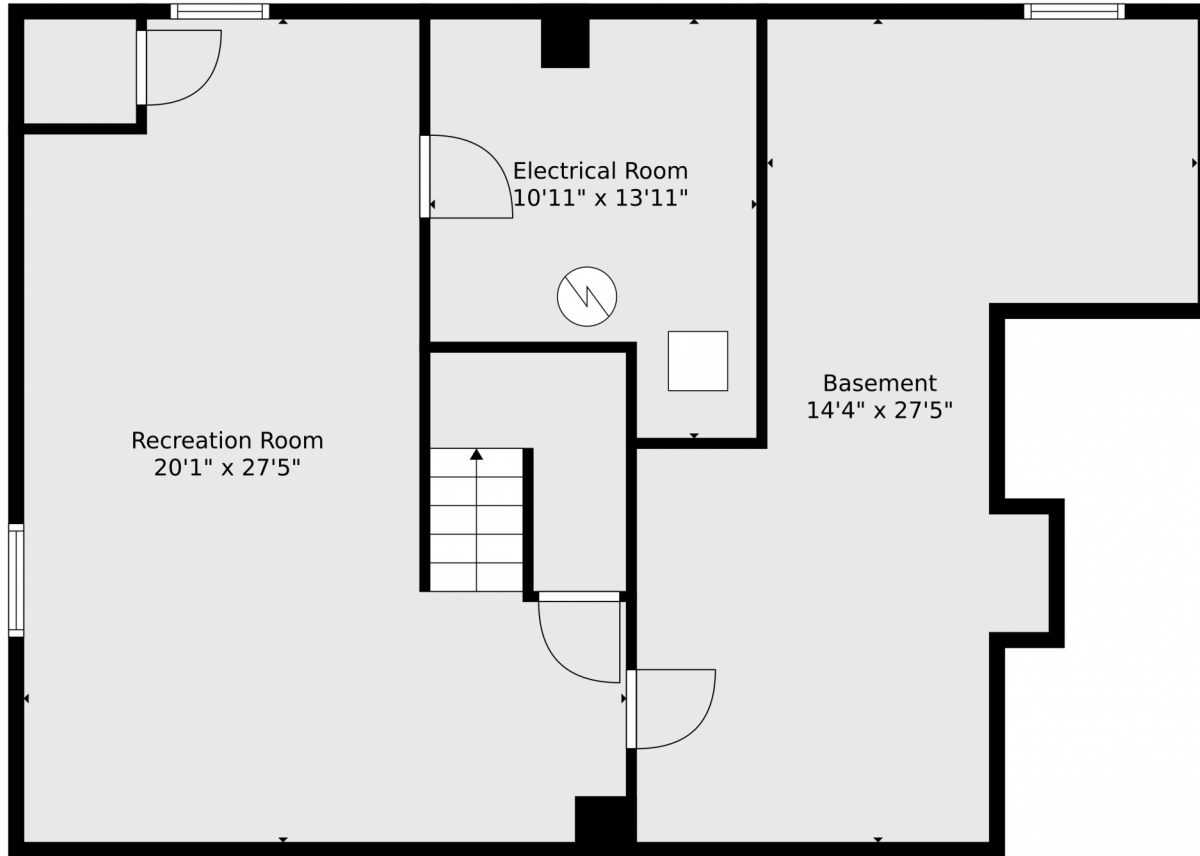
**Olga Telesin**  
720-365-4651  
olga@exitrealtydtc.com



Scan code  
for more  
property  
details



13194 Peacock Drive, Lone Tree, CO 80124 – Lower Level



**TOTAL: 2575 sq. ft**  
BELOW GROUND: 471 sq. ft, FLOOR 2: 1224 sq. ft, FLOOR 3: 880 sq. ft  
EXCLUDED AREAS: BASEMENT: 339 sq. ft, ELECTRICAL ROOM: 130 sq. ft, UNDEFINED: 13 sq. ft,  
GARAGE: 388 sq. ft, PATIO: 218 sq. ft, PORCH: 151 sq. ft,  
FIREPLACE: 10 sq. ft

Floor Plan Created By V1photos.com, Measurements Deamed Highly Reliable But Not Guaranteed.



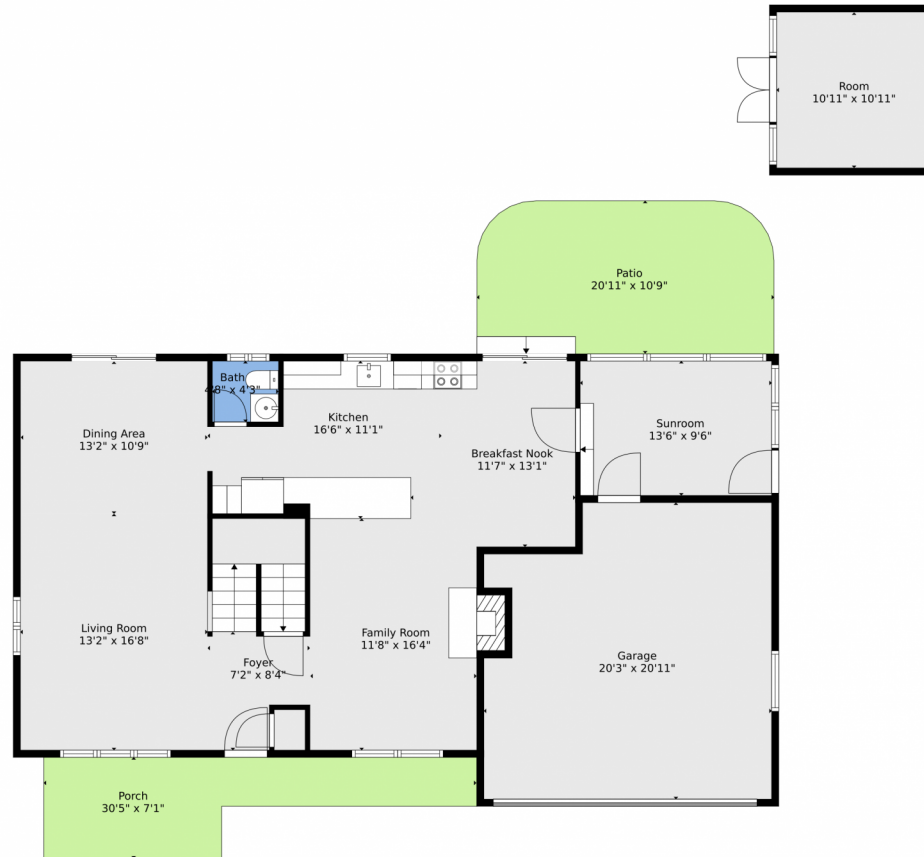
Disclaimer: Sizes and Dimensions are Approximate, Actual May Vary.



**Olga Telesin**  
720-365-4651  
olga@exitrealtydtc.com



# 13194 Peacock Drive, Lone Tree, CO 80124 – Main



**TOTAL: 2575 sq. ft**  
BELOW GROUND: 471 sq. ft, FLOOR 2: 1224 sq. ft, FLOOR 3: 880 sq. ft  
EXCLUDED AREAS: BASEMENT: 339 sq. ft, ELECTRICAL ROOM: 130 sq. ft, UNDEFINED: 13 sq. ft,  
GARAGE: 388 sq. ft, PATIO: 218 sq. ft, PORCH: 151 sq. ft,  
FIREPLACE: 10 sq. ft

Floor Plan Created By V1photos.com, Measurements Deamed Highly Reliable But Not Guaranteed.



Disclaimer: Sizes and Dimensions are Approximate, Actual May Vary.



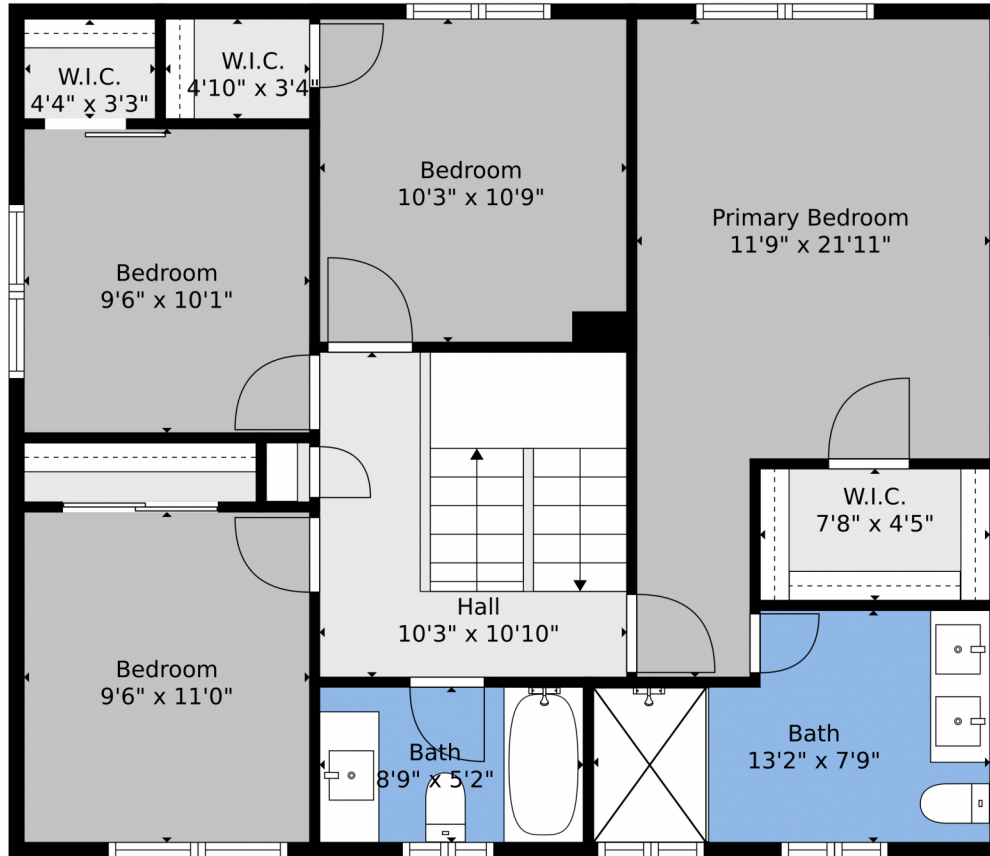
**Olga Telesin**  
720-365-4651  
olga@exitrealttydtc.com



Scan code  
for more  
property  
details



13194 Peacock Drive, Lone Tree, CO 80124 – 2nd Level



**TOTAL: 2575 sq. ft**  
BELOW GROUND: 471 sq. ft, FLOOR 2: 1224 sq. ft, FLOOR 3: 880 sq. ft  
EXCLUDED AREAS: BASEMENT: 339 sq. ft, ELECTRICAL ROOM: 130 sq. ft, UNDEFINED: 13 sq. ft,  
GARAGE: 388 sq. ft, PATIO: 218 sq. ft, PORCH: 151 sq. ft,  
FIREPLACE: 10 sq. ft

Floor Plan Created By V1photos.com, Measurements Deamed Highly Reliable But Not Guaranteed.



Disclaimer: Sizes and Dimensions are Approximate, Actual May Vary.



**Olga Telesin**  
720-365-4651  
olga@exitrealttydtc.com



# 13194 Peacock Drive, Lone Tree, CO 80124 – All Levels



**TOTAL: 2575 sq. ft**  
BELOW GROUND: 471 sq. ft, FLOOR 2: 1224 sq. ft, FLOOR 3: 880 sq. ft  
EXCLUDED AREAS: BASEMENT: 339 sq. ft, ELECTRICAL ROOM: 130 sq. ft, UNDEFINED: 13 sq. ft,  
GARAGE: 388 sq. ft, PATIO: 218 sq. ft, PORCH: 151 sq. ft,  
FIREPLACE: 10 sq. ft

Floor Plan Created By V1photos.com, Measurements Deamed Highly Reliable But Not Guaranteed.

Disclaimer: Sizes and Dimensions are Approximate, Actual May Vary.



**Olga Telesin**  
720-365-4651  
olga@exitrealtydtc.com

