





9266 West 107th Mews
 Westminster, CO 80021
 COMMUNITY: Walnut Grove



 Townhouse

 1462 SQFT

 2 Beds

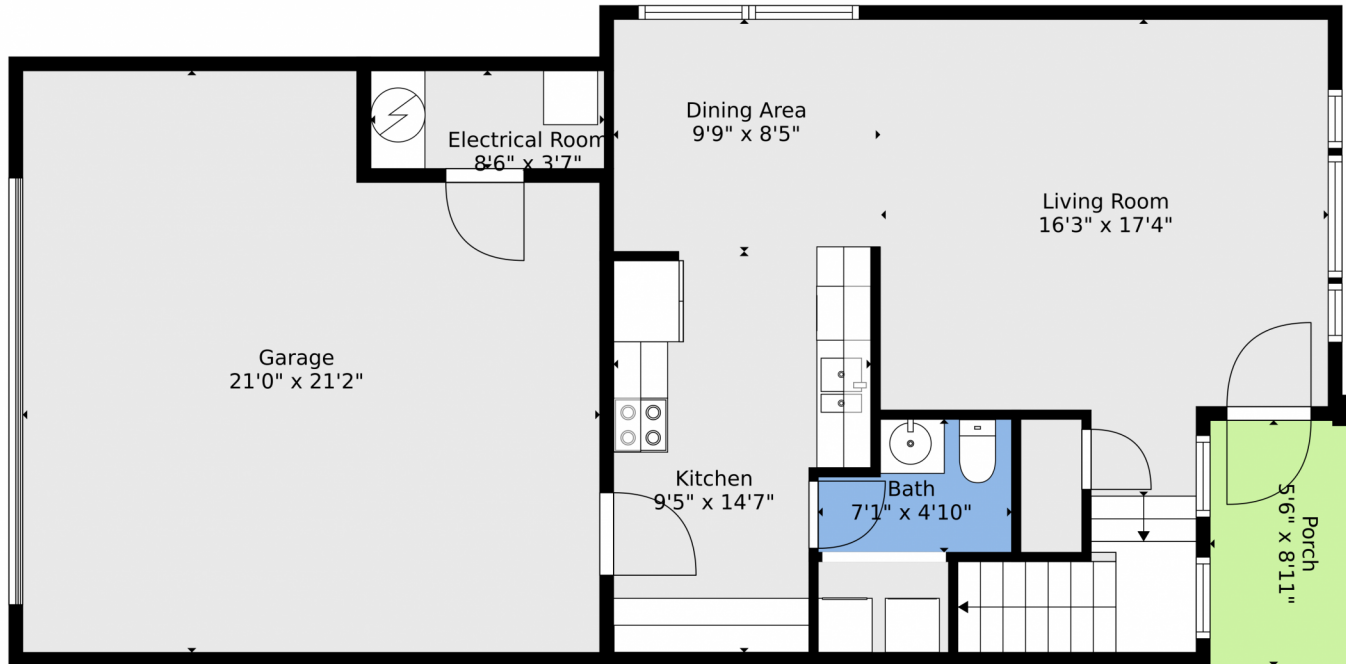
 2/1 Baths

 2 Car



Kelly Majure
 303-709-8613
 kellym@elevatedrealestate.com





TOTAL: 1362 sq. ft
BELOW GROUND: 559 sq. ft, FLOOR 2: 803 sq. ft
EXCLUDED AREAS: GARAGE: 410 sq. ft, ELECTRICAL ROOM: 30 sq. ft, PORCH: 49 sq. ft
Floor Plan Created By V1photos.com, Measurements Deamed Highly Reliable But Not Guaranteed.



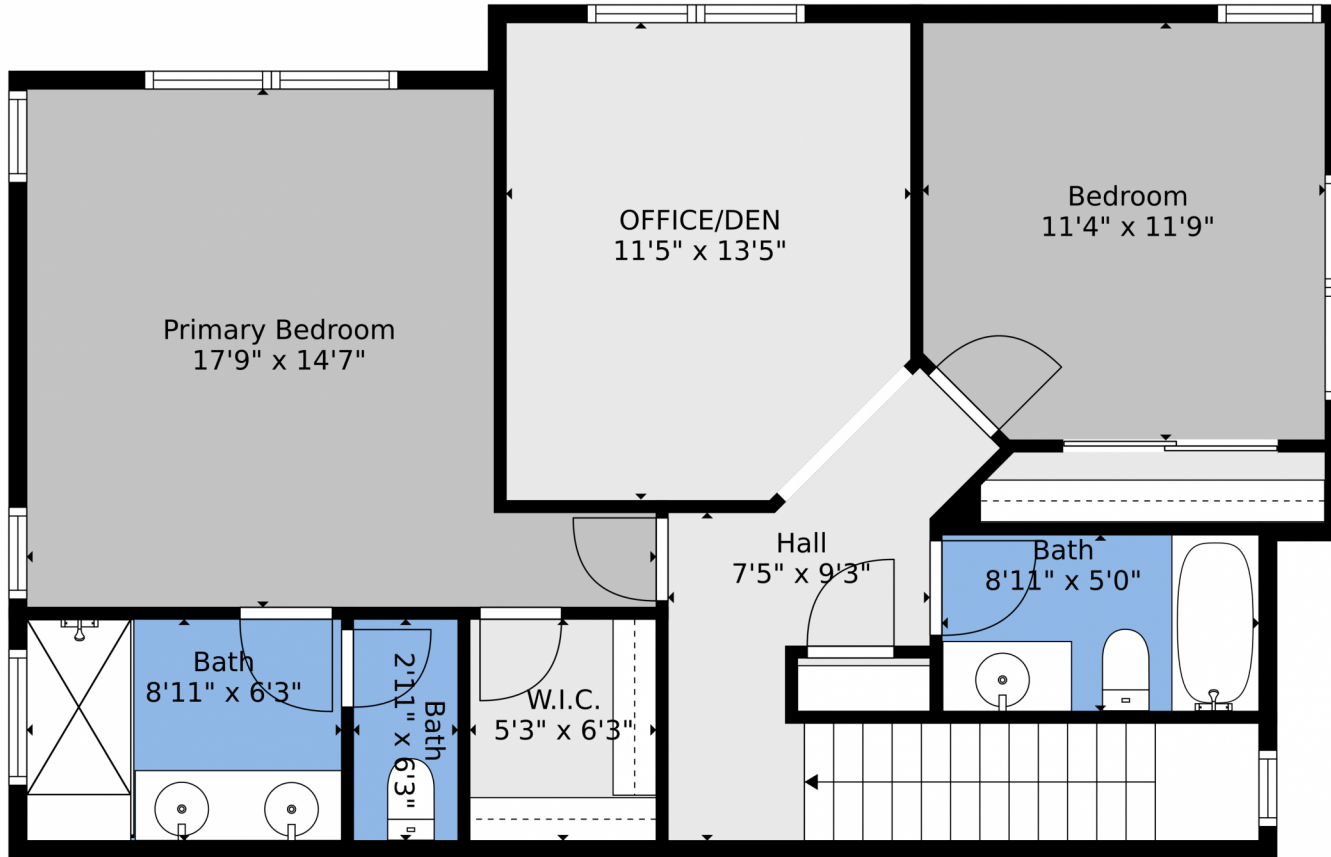
Disclaimer: Sizes and Dimensions are Approximate, Actual May Vary.



Kelly Majure
303-709-8613
kellym@elevatedrealestate.com



9266 West 107th Mews, Westminster, CO 80021 – 2nd Level



TOTAL: 1362 sq. ft
BELOW GROUND: 559 sq. ft, FLOOR 2: 803 sq. ft
EXCLUDED AREAS: GARAGE: 410 sq. ft, ELECTRICAL ROOM: 30 sq. ft, PORCH: 49 sq. ft
Floor Plan Created By V1photos.com, Measurements Deamed Highly Reliable But Not Guaranteed.



Disclaimer: Sizes and Dimensions are Approximate, Actual May Vary.



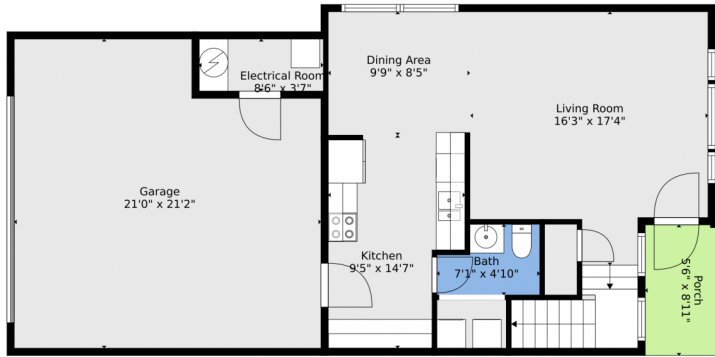
Kelly Majure
303-709-8613
kellym@elevatedrealestate.com



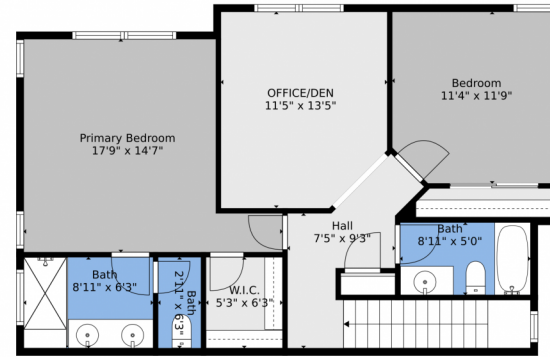
Scan code for more property details



9266 West 107th Mews, Westminster, CO 80021 – All Levels



Floor 1



Floor 2

TOTAL: 1362 sq. ft
BELOW GROUND: 559 sq. ft, FLOOR 2: 803 sq. ft
EXCLUDED AREAS: GARAGE: 410 sq. ft, ELECTRICAL ROOM: 30 sq. ft, PORCH: 49 sq. ft

Floor Plan Created By V1photos.com. Measurements Deamed Highly Reliable But Not Guaranteed.



Disclaimer: Sizes and Dimensions are Approximate, Actual May Vary.



Kelly Majure
303-709-8613
kellym@elevatedrealestate.com

