




 Single Family

 1577 SQFT

 3 Beds

 3 Baths

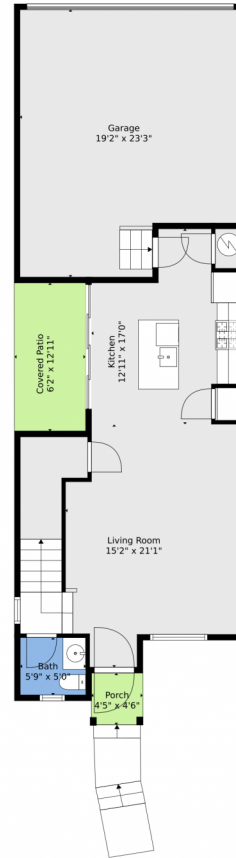


**Taylor Haas**  
303-665-7368  
taylorh@coloradorpm.com  
<https://www.coloradorpm.com/available-rental-properties-denver>



Scan code  
for more  
property  
details





**TOTAL: 1425 sq. ft**  
FLOOR 1: 579 sq. ft, FLOOR 2: 846 sq. ft  
EXCLUDED AREAS: GARAGE: 410 sq. ft, COVERED PATIO: 80 sq. ft, PORCH: 20 sq. ft,  
UNDEFINED: 13 sq. ft

Floor Plan Created By V1photos.com, Measurements Deamed Highly Reliable But Not Guaranteed.



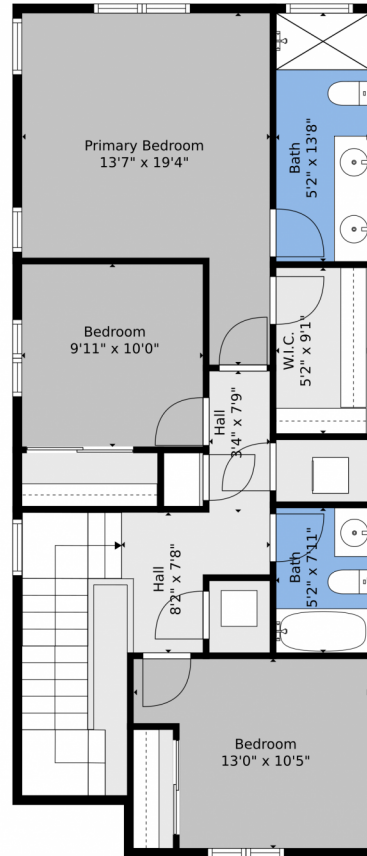
Disclaimer: Sizes and Dimensions are Approximate, Actual May Vary.



**Taylor Haas**  
303-665-7368  
taylorh@coloradorpm.com  
<https://www.coloradorpm.com/available-rental-properties-denver>



5332 Spalding Place, Longmont, CO 80504 – 2nd Level



**TOTAL: 1425 sq. ft**  
FLOOR 1: 579 sq. ft, FLOOR 2: 846 sq. ft  
EXCLUDED AREAS: GARAGE: 410 sq. ft, COVERED PATIO: 80 sq. ft, PORCH: 20 sq. ft,  
UNDEFINED: 13 sq. ft

Floor Plan Created By V1photos.com, Measurements Deamed Highly Reliable But Not Guaranteed.



Disclaimer: Sizes and Dimensions are Approximate, Actual May Vary.



**Taylor Haas**  
303-665-7368  
taylorh@coloradorpm.com  
<https://www.coloradorpm.com/available-rental-properties-denver>



# 5332 Spalding Place, Longmont, CO 80504 – All Levels



**TOTAL: 1425 sq. ft**  
FLOOR 1: 579 sq. ft, FLOOR 2: 846 sq. ft  
EXCLUDED AREAS: GARAGE: 410 sq. ft, COVERED PATIO: 80 sq. ft, PORCH: 20 sq. ft,  
UNDEFINED: 13 sq. ft

Floor Plan Created By V1photos.com, Measurements Deamed Highly Reliable But Not Guaranteed.



Disclaimer: Sizes and Dimensions are Approximate, Actual May Vary.



**Taylor Haas**  
303-665-7368  
taylorh@coloradorpm.com  
<https://www.coloradorpm.com/available-rental-properties-denver>



Scan code  
for more  
property  
details

