



 Single Family

 1926 SQFT

 3 Beds

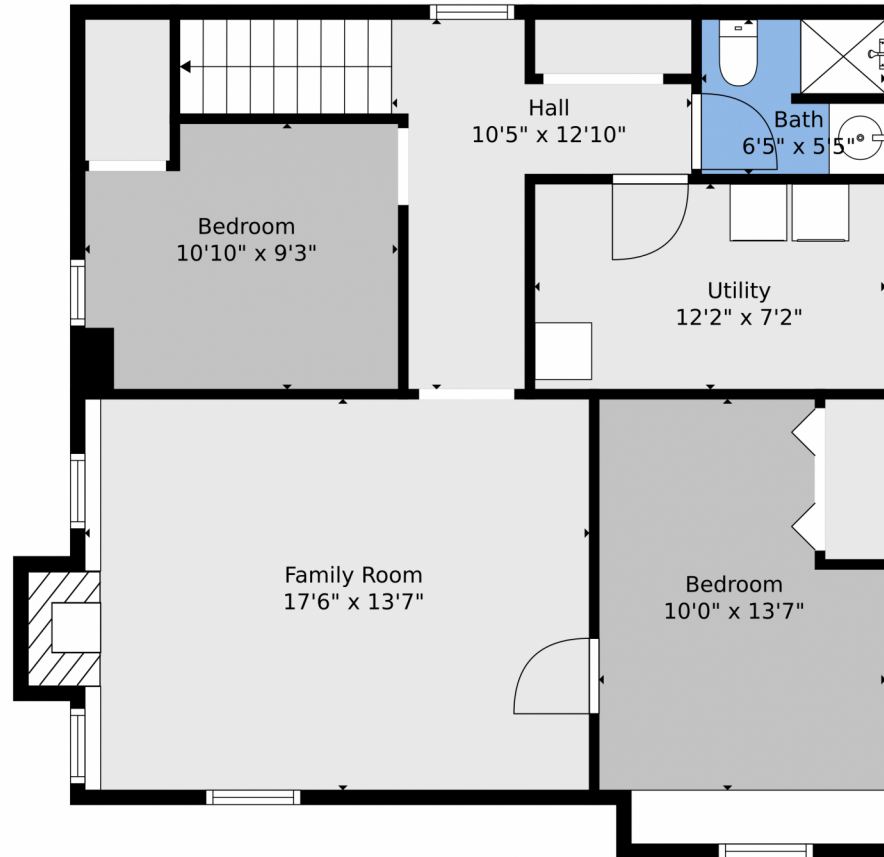
 2 Baths



Taylor Haas
303-665-7368
taylorh@coloradorpm.com
<https://www.coloradorpm.com/available-rental-properties-denv>



791 Jasmine Street, Denver, CO 80220 – Lower Level



TOTAL: 1598 sq. ft
BELOW GROUND: 676 sq. ft, FLOOR 2: 922 sq. ft
EXCLUDED AREAS: UTILITY: 87 sq. ft, FIREPLACE: 20 sq. ft, GARAGE: 191 sq. ft,
COVERED PATIO: 340 sq. ft, PORCH: 103 sq. ft

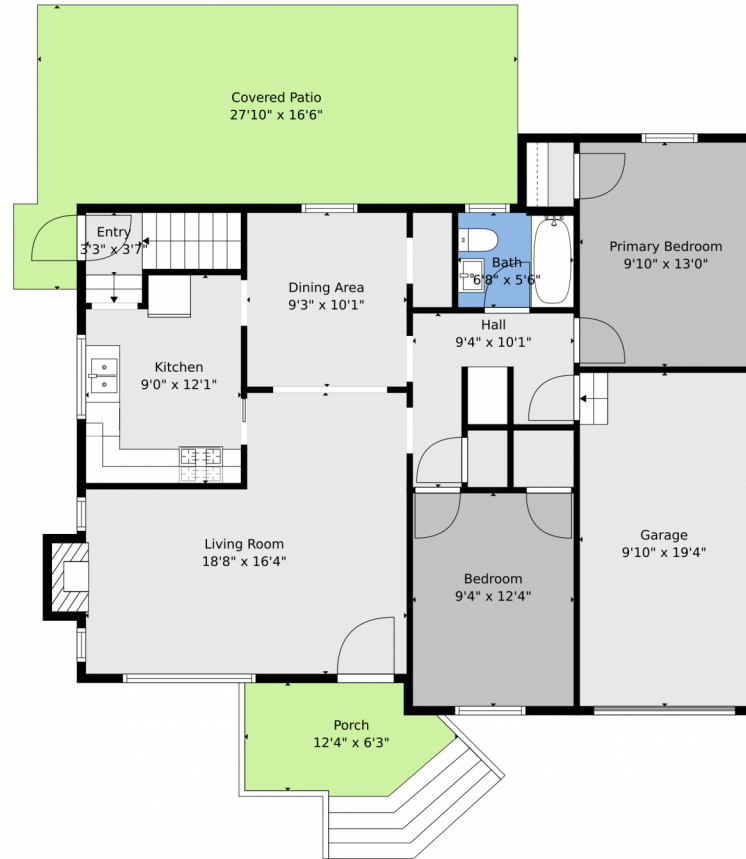
Floor Plan Created By V1photos.com, Measurements Deamed Highly Reliable But Not Guaranteed.

Disclaimer: Sizes and Dimensions are Approximate, Actual May Vary.



Taylor Haas
303-665-7368
taylorh@coloradorpm.com
<https://www.coloradorpm.com/available-rental-properties-denver>





TOTAL: 1598 sq. ft
BELOW GROUND: 676 sq. ft, FLOOR 2: 922 sq. ft
EXCLUDED AREAS: UTILITY: 87 sq. ft, FIREPLACE: 20 sq. ft, GARAGE: 191 sq. ft,
COVERED PATIO: 340 sq. ft, PORCH: 103 sq. ft

Floor Plan Created By V1photos.com, Measurements Deamed Highly Reliable But Not Guaranteed.



Disclaimer: Sizes and Dimensions are Approximate, Actual May Vary.



Taylor Haas

303-665-7368

taylorh@coloradorp.com

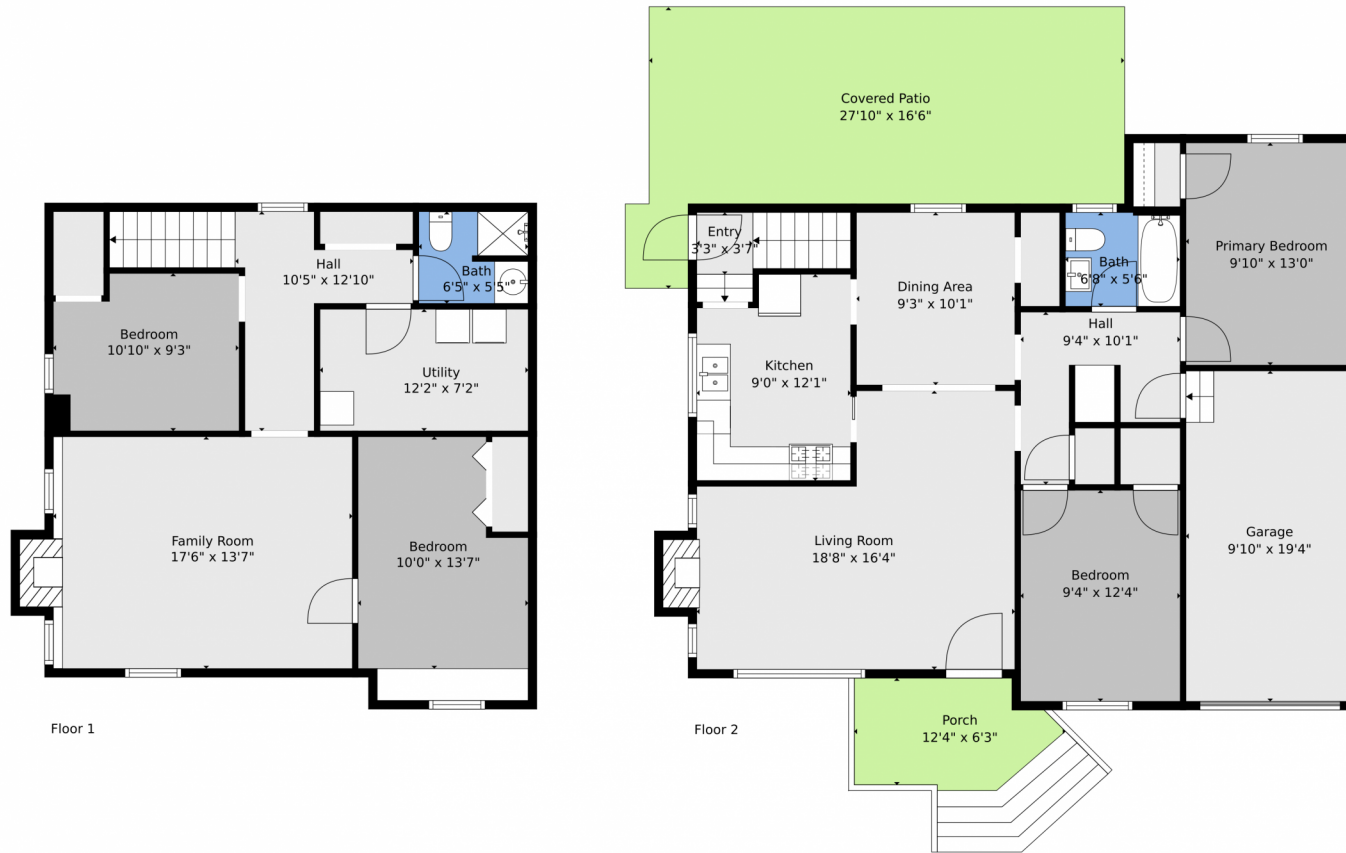
<https://www.coloradorp.com/available-rental-properties-denver>



Scan code
for more
property
details



791 Jasmine Street, Denver, CO 80220 – All Levels



TOTAL: 1598 sq. ft
BELOW GROUND: 676 sq. ft, FLOOR 2: 922 sq. ft
EXCLUDED AREAS: UTILITY: 87 sq. ft, FIREPLACE: 20 sq. ft, GARAGE: 191 sq. ft,
COVERED PATIO: 340 sq. ft, PORCH: 103 sq. ft

Floor Plan Created By V1photos.com, Measurements Deamed Highly Reliable But Not Guaranteed.



Disclaimer: Sizes and Dimensions are Approximate, Actual May Vary.



Taylor Haas

303-665-7368

taylorh@coloradorpm.com

<https://www.coloradorpm.com/available-rental-properties-denver>



Scan code
for more
property
details

