




1125 e kentucky ave  
denver, CO 80209



 Single Family

 1485 SQFT

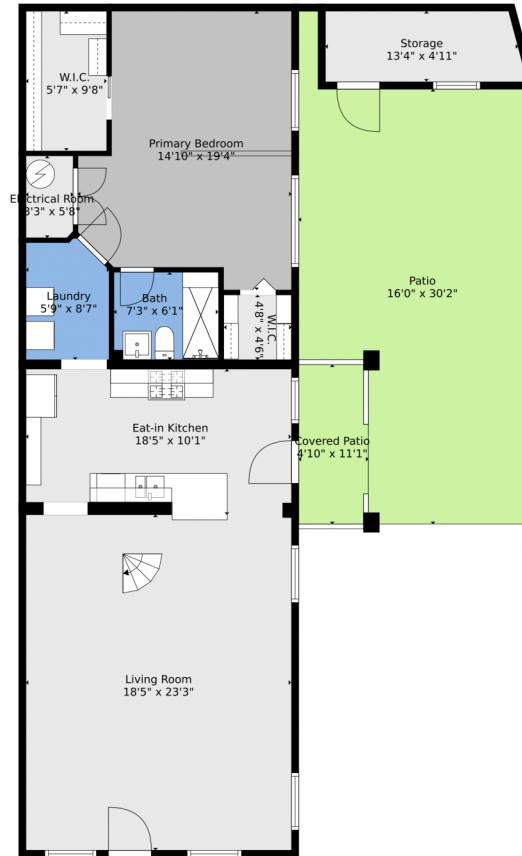
 2 Beds

 2 Baths



**Jaden Combs**  
303-324-1437  
jaden@kentwood.com





**TOTAL: 1238 sq. ft**  
BELOW GROUND: 1055 sq. ft, FLOOR 2: 183 sq. ft  
EXCLUDED AREAS: ELECTRICAL ROOM: 19 sq. ft, STORAGE: 66 sq. ft, PATIO: 434 sq. ft,  
COVERED PATIO: 51 sq. ft, LOW CEILING: 152 sq. ft

Floor Plan Created By V1photos.com, Measurements Deamed Highly Reliable But Not Guaranteed.

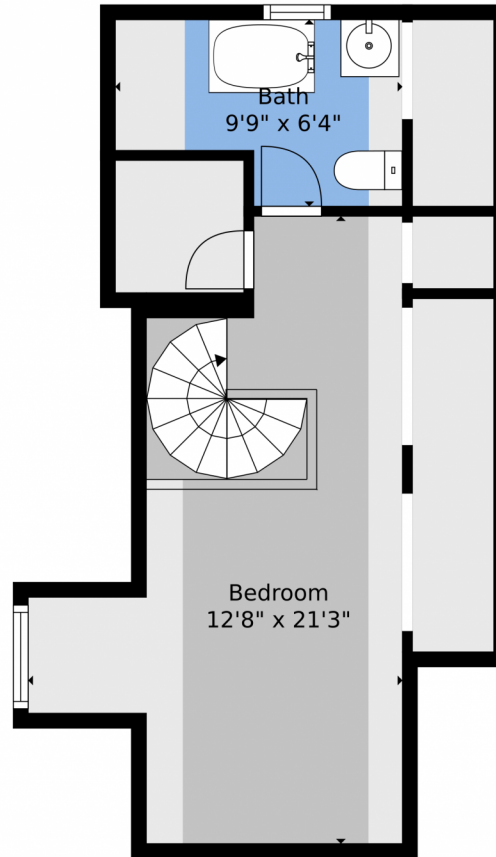


Disclaimer: Sizes and Dimensions are Approximate, Actual May Vary.



**Jaden Combs**  
303-324-1437  
jaden@kentwood.com





**TOTAL: 1238 sq. ft**  
BELOW GROUND: 1055 sq. ft, FLOOR 2: 183 sq. ft  
EXCLUDED AREAS: ELECTRICAL ROOM: 19 sq. ft, STORAGE: 66 sq. ft, PATIO: 434 sq. ft,  
COVERED PATIO: 51 sq. ft, LOW CEILING: 152 sq. ft

Floor Plan Created By V1photos.com, Measurements Deamed Highly Reliable But Not Guaranteed.



Disclaimer: Sizes and Dimensions are Approximate, Actual May Vary.



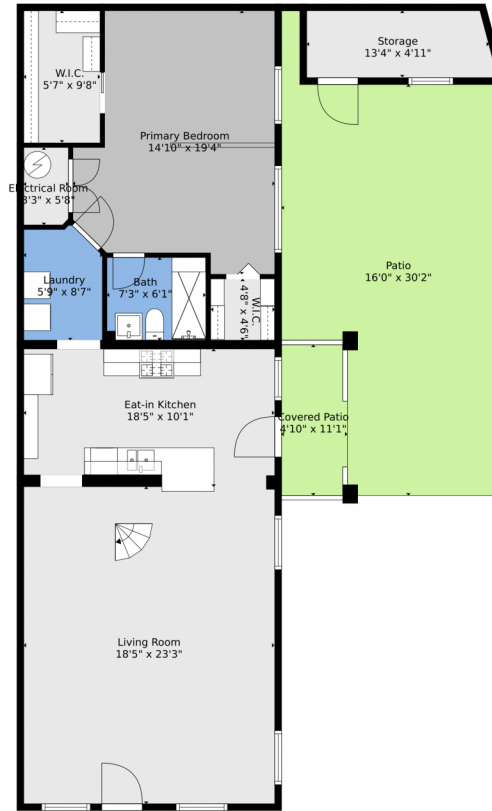
**Jaden Combs**  
303-324-1437  
jaden@kentwood.com



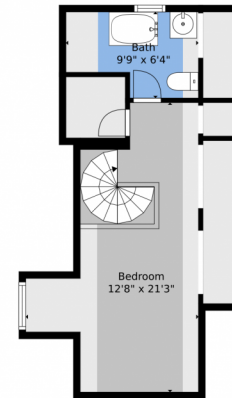
Scan code  
for more  
property  
details



# 1125 e kentucky ave, denver, CO 80209 – All Levels



Floor 1



Floor 2

**TOTAL: 1238 sq. ft**  
BELOW GROUND: 1055 sq. ft, FLOOR 2: 183 sq. ft  
EXCLUDED AREAS: ELECTRICAL ROOM: 19 sq. ft, STORAGE: 66 sq. ft, PATIO: 434 sq. ft,  
COVERED PATIO: 51 sq. ft, LOW CEILING: 152 sq. ft

Floor Plan Created By V1photos.com, Measurements Deamed Highly Reliable But Not Guaranteed.



Disclaimer: Sizes and Dimensions are Approximate, Actual May Vary.



**Jaden Combs**  
303-324-1437  
jaden@kentwood.com

