





 Single Family

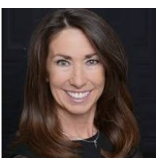
 1621 SQFT

 3 Beds

 2 Baths

 2 Car

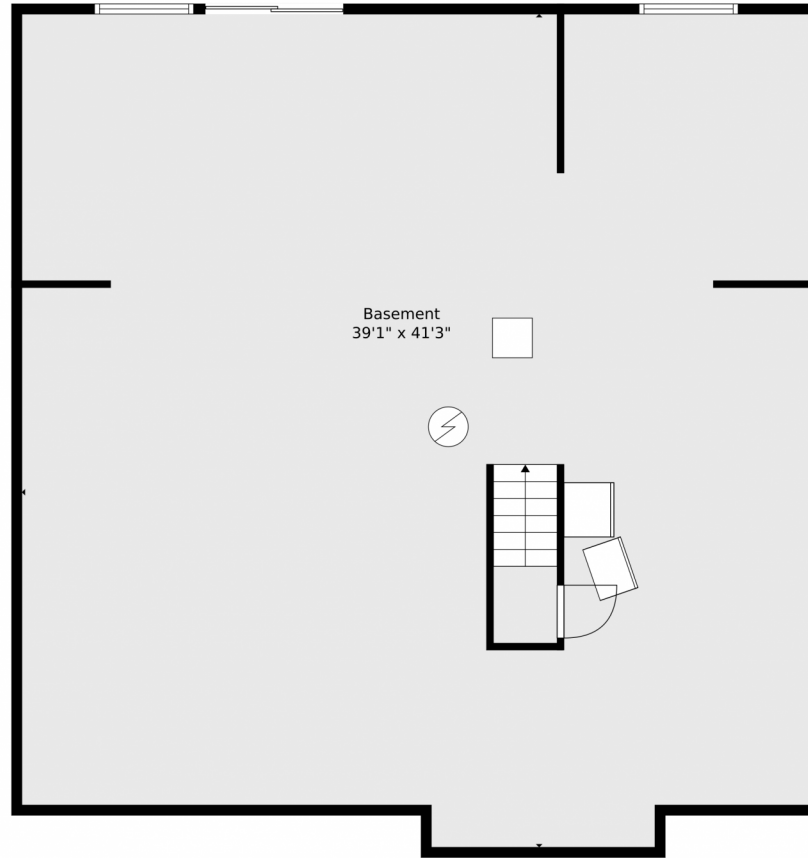
 0.17 Acre



Kristin Frasier
303-587-1103
kristinfrasier@kw.com



12868 Capital Creek St, Parker, CO 80134 – Lower Level



TOTAL: 1564 sq. ft
BELOW GROUND: 0 sq. ft, FLOOR 2: 1564 sq. ft
EXCLUDED AREAS: BASEMENT: 1553 sq. ft, GARAGE: 371 sq. ft
Floor Plan Created By V1photos.com, Measurements Deamed Highly Reliable But Not Guaranteed.

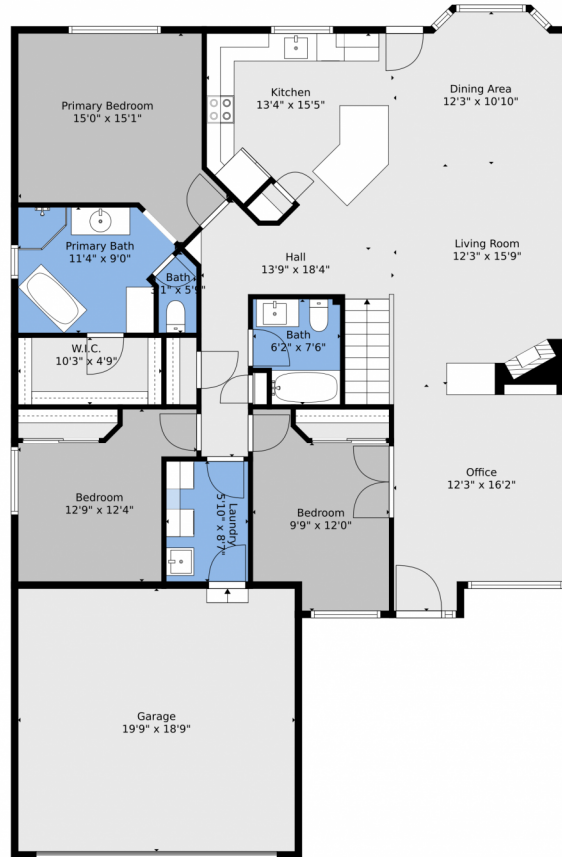


Disclaimer: Sizes and Dimensions are Approximate, Actual May Vary.



Kristin Frasier
303-587-1103
kristinfrasier@kw.com





TOTAL: 1564 sq. ft
BELOW GROUND: 0 sq. ft, FLOOR 2: 1564 sq. ft
EXCLUDED AREAS: BASEMENT: 1553 sq. ft, GARAGE: 371 sq. ft
Floor Plan Created By V1photos.com, Measurements Deamed Highly Reliable But Not Guaranteed.



Disclaimer: Sizes and Dimensions are Approximate, Actual May Vary.



Kristin Frasier
303-587-1103
kristinfrasier@kw.com



12868 Capital Creek St, Parker, CO 80134 – All Levels



TOTAL: 1564 sq. ft
BELOW GROUND: 0 sq. ft, FLOOR 2: 1564 sq. ft
EXCLUDED AREAS: BASEMENT: 1553 sq. ft, GARAGE: 371 sq. ft
Floor Plan Created By V1photos.com, Measurements Deamed Highly Reliable But Not Guaranteed.



Disclaimer: Sizes and Dimensions are Approximate, Actual May Vary.



Kristin Frasier
303-587-1103
kristinfrasier@kw.com

