



 Single Family  2948 SQFT  4 Beds  3 Baths  2 Car  0.16 Acre

PROPERTY DETAILS

Welcome to this spacious single-family home in Lakewood Estates, Denver. This impressive property features 4 bedrooms and 3 full bathrooms within 2,948 square feet. It includes a two-car garage for ample parking and storage.

The open-concept layout maximizes comfort and functionality, ideal for entertaining. Bedrooms are well-sized with natural light, and bathrooms feature modern fixtures. The community is friendly and offers parks, schools, and shopping, creating a vibrant environment.

With easy access to major highways, commuting to downtown Denver and nearby recreational areas is a breeze. This home is a fantastic opportunity for anyone looking to join a welcoming and thriving community.



Tonie Benetti
303-210-7336
tonie@tbkrealstate.com
<https://www.tbkrealstate.com>



2295 S Depew Street, Denver, CO 80227 – Lower Level



TOTAL: 2574 sq. ft
BELOW GROUND: 1155 sq. ft, FLOOR 2: 1419 sq. ft
EXCLUDED AREAS: STORAGE: 52 sq. ft, ELECTRICAL ROOM: 110 sq. ft, GARAGE: 366 sq. ft,
PORCH: 54 sq. ft, PATIO: 310 sq. ft, COVERED PATIO: 168 sq. ft

Floor Plan Created By V1photos.com, Measurements Deamed Highly Reliable But Not Guaranteed.

Disclaimer: Sizes and Dimensions are Approximate, Actual May Vary.

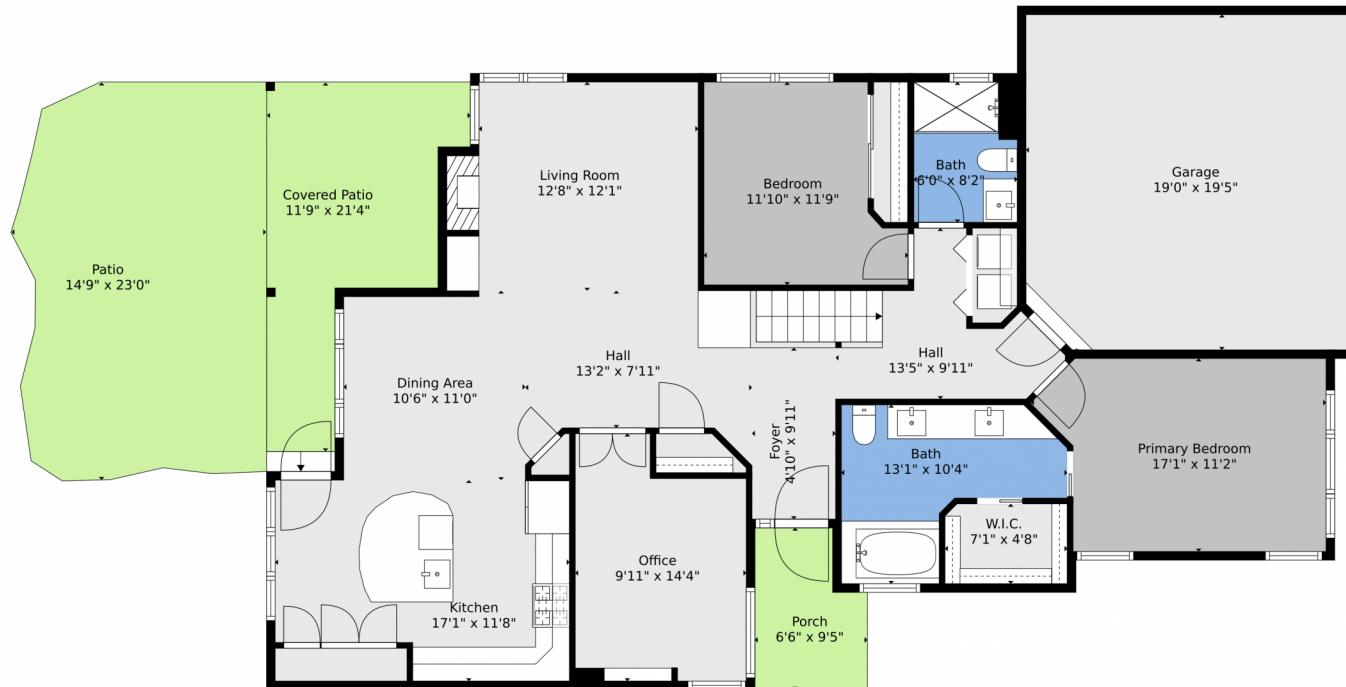


Tonie Benetti
303-210-7336
tonie@tbkrealstate.com
<https://www.tbkrealstate.com>



Scan code
for more
property
details





TOTAL: 2574 sq. ft
BELOW GROUND: 1155 sq. ft, FLOOR 2: 1419 sq. ft
EXCLUDED AREAS: STORAGE: 52 sq. ft, ELECTRICAL ROOM: 110 sq. ft, GARAGE: 366 sq. ft,
PORCH: 54 sq. ft, PATIO: 310 sq. ft, COVERED PATIO: 168 sq. ft

Floor Plan Created By V1photos.com, Measurements Deamed Highly Reliable But Not Guaranteed.



Disclaimer: Sizes and Dimensions are Approximate, Actual May Vary.



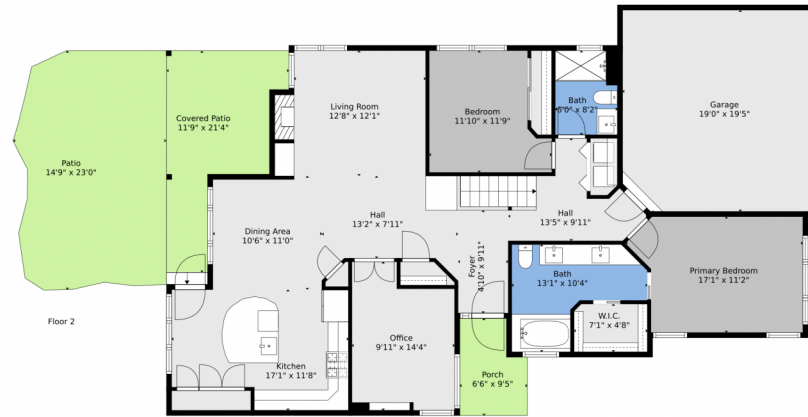
Tonie Benetti
303-210-7336
tonie@tbkrealstate.com
<https://www.tbkrealstate.com>



Scan code
for more
property
details



2295 S Depew Street, Denver, CO 80227 – All Levels



Floor 1

TOTAL: 2574 sq. ft
BELOW GROUND: 1155 sq. ft, FLOOR 2: 1419 sq. ft
EXCLUDED AREAS: STORAGE: 52 sq. ft, ELECTRICAL ROOM: 110 sq. ft, GARAGE: 366 sq. ft,
PORCH: 54 sq. ft, PATIO: 310 sq. ft, COVERED PATIO: 168 sq. ft

Floor Plan Created By V1photos.com, Measurements Deamed Highly Reliable But Not Guaranteed.



Disclaimer: Sizes and Dimensions are Approximate, Actual May Vary.



Tonie Benetti
303-210-7336
tonie@tbkrealstate.com
<https://www.tbkrealstate.com>



Scan code
for more
property
details

