



500 Himalaya Avenue
Broomfield, CO 80020
COMMUNITY: COUNTRY ESTATES

MLS # 6352936
PRICE \$1



Single Family



5122 SQFT



5 Beds



4/1 Baths



3 Car



0.25 Acre

PROPERTY DETAILS

This stunning home combines luxury and thoughtful design, ideal for entertaining and refined living. The elegant gourmet kitchen features a gas cooktop, warming drawer, and a spacious walk-in pantry. A butler's pantry connects the kitchen to the dining area for seamless hosting. The main level includes a dedicated study and every bedroom has its own private en-suite bath. The expansive primary suite offers a luxurious en-suite with a jetted tub, dual vanities, and a spacious walk-in closet. Outside, enjoy a covered patio oasis with ceiling fans and a tranquil fountain. The finished basement is perfect for entertainment, featuring a wet bar, wine refrigerators, and a home theater setup. Two additional bedrooms downstairs provide guest options, while a hidden door leads to an unfinished area for storage or customization. This home truly checks every box for modern living.



Jeni VanOrnum

303-475-3880

jenivorealtor@gmail.com

<https://www.jenivosellscolorado.com>



Scan code
for more
property
details



500 Himalaya Avenue, Broomfield, CO 80020 — Main



TOTAL: 4290 sq. ft
BELOW GROUND: 1525 sq. ft, FLOOR 2: 2765 sq. ft
EXCLUDED AREAS: STORAGE: 435 sq. ft, PORCH: 63 sq. ft, COVERED PATIO: 552 sq. ft,
GARAGE: 726 sq. ft

Floor Plan Created By V1photos.com, Measurements Deamed Highly Reliable But Not Guaranteed.



Disclaimer: Sizes and Dimensions are Approximate, Actual May Vary.



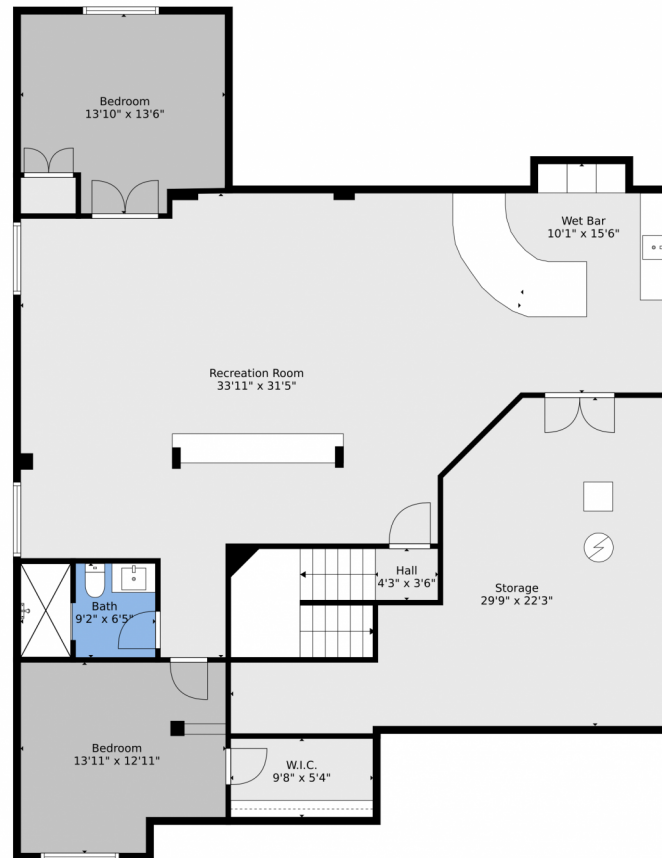
Jeni VanOrnum
303-475-3880
jenivorealtor@gmail.com
<https://www.jenivosellscolorado.com>



Scan code
for more
property
details



500 Himalaya Avenue, Broomfield, CO 80020 — Lower Level



TOTAL: 4290 sq. ft
BELOW GROUND: 1525 sq. ft, FLOOR 2: 2765 sq. ft
EXCLUDED AREAS: STORAGE: 435 sq. ft, PORCH: 63 sq. ft, COVERED PATIO: 552 sq. ft,
GARAGE: 726 sq. ft

Floor Plan Created By V1photos.com, Measurements Deamed Highly Reliable But Not Guaranteed.



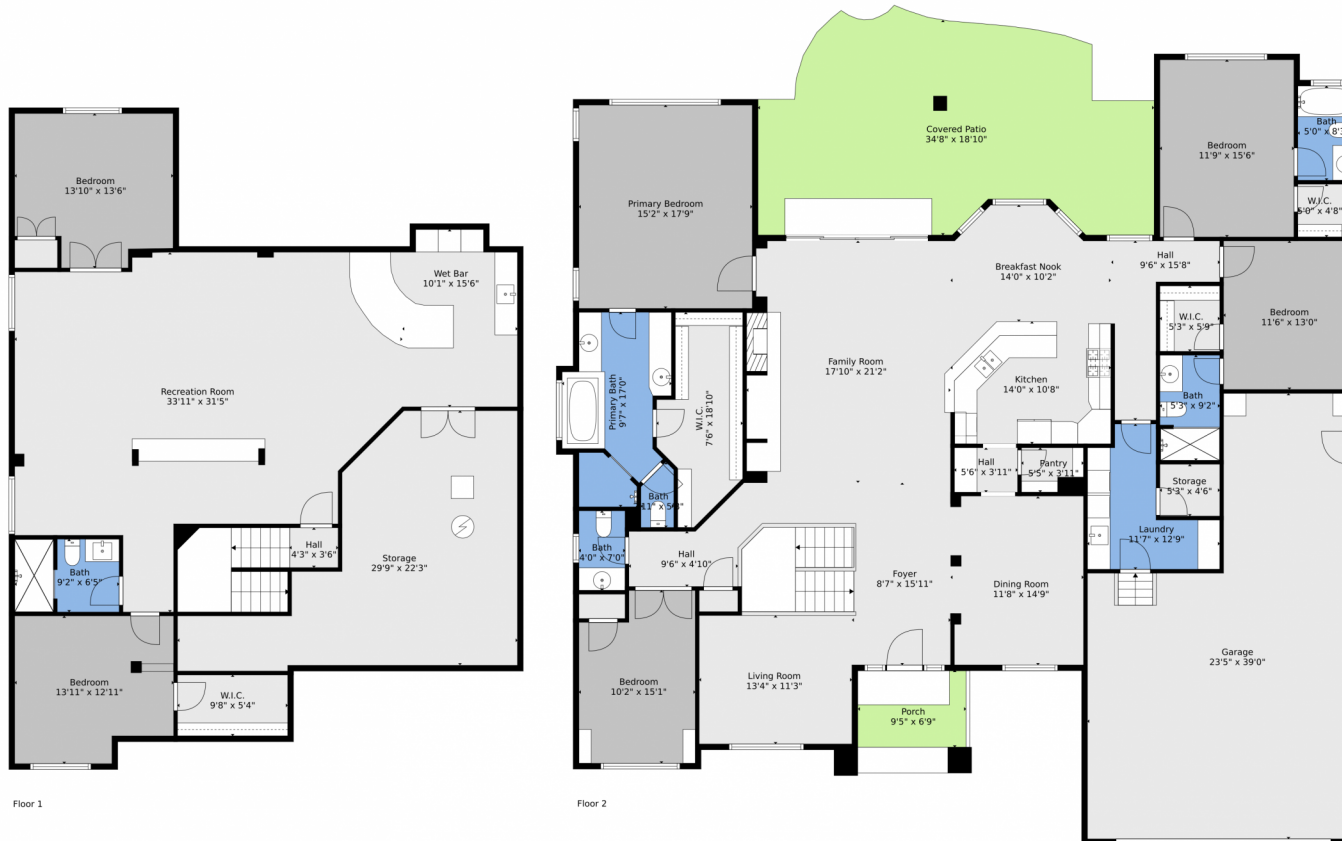
Disclaimer: Sizes and Dimensions are Approximate, Actual May Vary.



Jeni VanOrnum
303-475-3880
jenivorealtor@gmail.com
<https://www.jenivosellscolorado.com>



500 Himalaya Avenue, Broomfield, CO 80020 – All Levels



TOTAL: 4290 sq. ft
 BELOW GROUND: 1525 sq. ft, FLOOR 2: 2765 sq. ft
 EXCLUDED AREAS: STORAGE: 435 sq. ft, PORCH: 63 sq. ft, COVERED PATIO: 552 sq. ft,
 GARAGE: 726 sq. ft

Floor Plan Created By V1photos.com, Measurements Deamed Highly Reliable But Not Guaranteed.



Disclaimer: Sizes and Dimensions are Approximate, Actual May Vary.



Jeni VanOrnum
 303-475-3880
jenivorealtor@gmail.com
<https://www.jenivosellscolorado.com>



Scan code
 for more
 property
 details

