

5365 Eldridge Street
Arvada, CO 80002



Single Family



2750 SQFT



3 Beds



2/1 Baths



3 Car



972 Acre



Keith Gantenbein
303-947-5213
keithgantenbein@hotmail.com



Scan code
for more
property
details





TOTAL: 5052 sq. ft
BELOW GROUND: 2446 sq. ft, FLOOR 2: 74 sq. ft, FLOOR 3: 2532 sq. ft, FLOOR 4: 0 sq. ft
EXCLUDED AREAS: GARAGE: 2822 sq. ft, PATIO: 426 sq. ft, PORCH: 519 sq. ft,
OPEN TO BELOW: 1857 sq. ft, STORAGE: 395 sq. ft

Floor Plan Created By V1photos.com, Measurements Deamed Highly Reliable But Not Guaranteed.



Disclaimer: Sizes and Dimensions are Approximate, Actual May Vary.



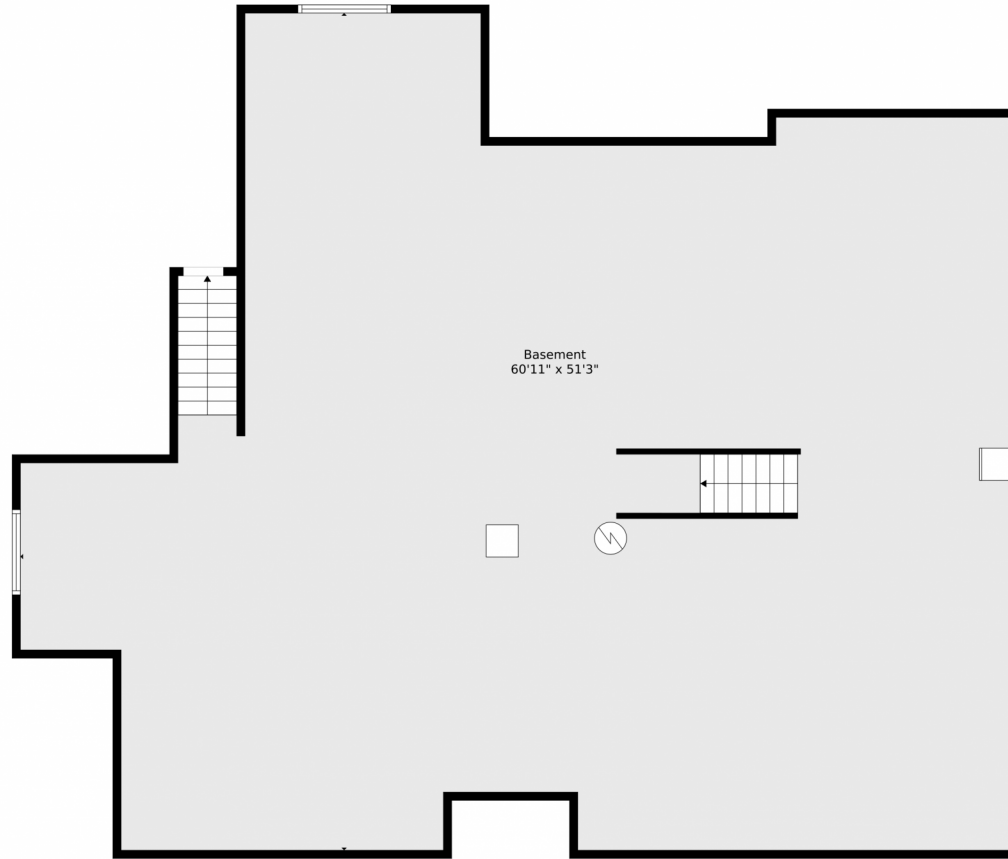
Keith Gantenbein
303-947-5213
keithgantenbein@hotmail.com



Scan code
for more
property
details



5365 Eldridge Street, Arvada, CO 80002 – Lower Level



TOTAL: 5052 sq. ft
BELOW GROUND: 2446 sq. ft, FLOOR 2: 74 sq. ft, FLOOR 3: 2532 sq. ft, FLOOR 4: 0 sq. ft
EXCLUDED AREAS: GARAGE: 2822 sq. ft, PATIO: 426 sq. ft, PORCH: 519 sq. ft,
OPEN TO BELOW: 1857 sq. ft, STORAGE: 395 sq. ft

Floor Plan Created By V1photos.com, Measurements Deamed Highly Reliable But Not Guaranteed.



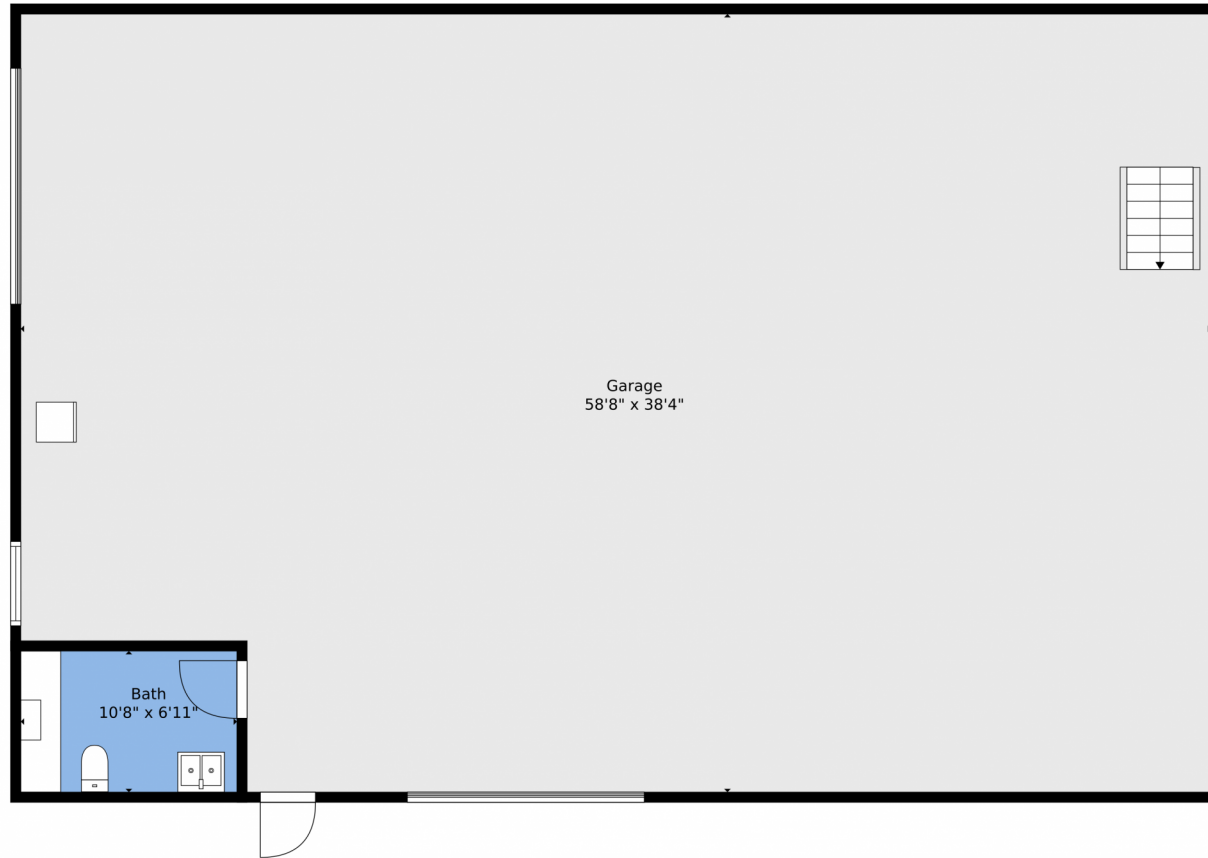
Disclaimer: Sizes and Dimensions are Approximate, Actual May Vary.



Keith Gantenbein
303-947-5213
keithgantenbein@hotmail.com



5365 Eldridge Street, Arvada, CO 80002 – Detached Garage



TOTAL: 5052 sq. ft
BELOW GROUND: 2446 sq. ft, FLOOR 2: 74 sq. ft, FLOOR 3: 2532 sq. ft, FLOOR 4: 0 sq. ft
EXCLUDED AREAS: GARAGE: 2822 sq. ft, PATIO: 426 sq. ft, PORCH: 519 sq. ft,
OPEN TO BELOW: 1857 sq. ft, STORAGE: 395 sq. ft

Floor Plan Created By V1photos.com, Measurements Deamed Highly Reliable But Not Guaranteed.



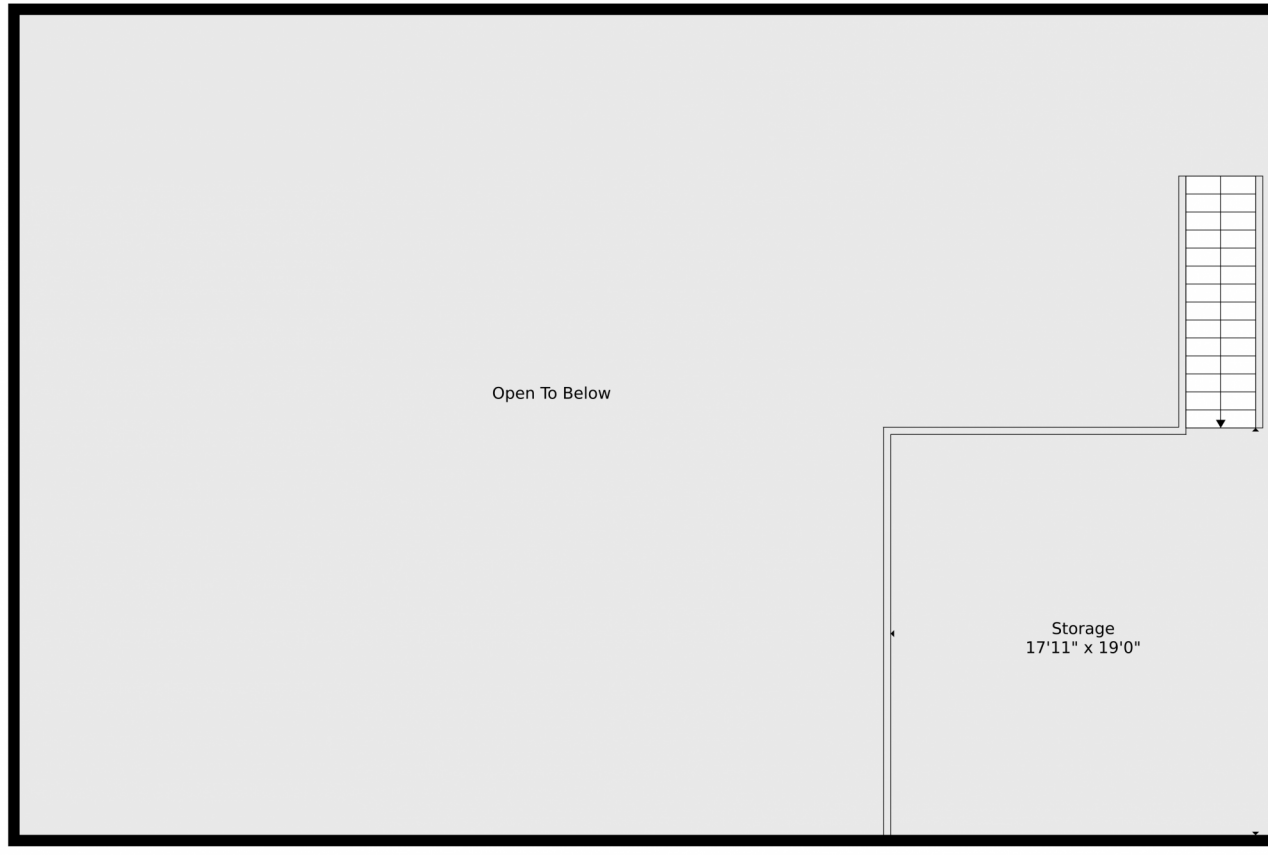
Disclaimer: Sizes and Dimensions are Approximate, Actual May Vary.



Keith Gantenbein
303-947-5213
keithgantenbein@hotmail.com



5365 Eldridge Street, Arvada, CO 80002 – Detached Garage



TOTAL: 5052 sq. ft
BELOW GROUND: 2446 sq. ft, FLOOR 2: 74 sq. ft, FLOOR 3: 2532 sq. ft, FLOOR 4: 0 sq. ft
EXCLUDED AREAS: GARAGE: 2822 sq. ft, PATIO: 426 sq. ft, PORCH: 519 sq. ft,
OPEN TO BELOW: 1857 sq. ft, STORAGE: 395 sq. ft

Floor Plan Created By V1photos.com. Measurements Deamed Highly Reliable But Not Guaranteed.



Disclaimer: Sizes and Dimensions are Approximate, Actual May Vary.



Keith Gantenbein
303-947-5213
keithgantenbein@hotmail.com



5365 Eldridge Street, Arvada, CO 80002 – All Levels



TOTAL: 5052 sq. ft
BELOW GROUND: 2446 sq. ft, FLOOR 2: 74 sq. ft, FLOOR 3: 2532 sq. ft, FLOOR 4: 0 sq. ft
EXCLUDED AREAS: GARAGE: 2822 sq. ft, PATIO: 426 sq. ft, PORCH: 519 sq. ft,
OPEN TO BELOW: 1857 sq. ft, STORAGE: 395 sq. ft

Floor Plan Created By V1photos.com, Measurements Deamed Highly Reliable But Not Guaranteed.



Disclaimer: Sizes and Dimensions are Approximate, Actual May Vary.



Keith Gantenbein
303-947-5213
keithgantenbein@hotmail.com



Scan code
for more
property
details

