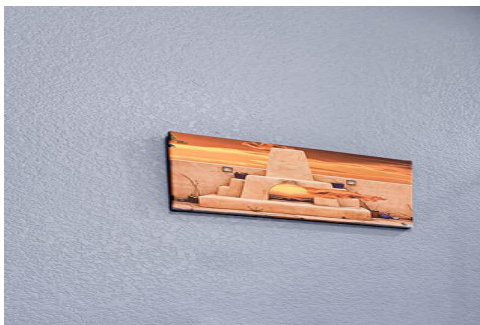


5365 Eldridge Street  
Arvada, CO 80002

MLS # 9419792  
PRICE \$1,925,000



Single Family



2750 SQFT



3 Beds



2/1 Baths



3 Car



972 Acre



**Keith Gantenbein**  
303-947-5213  
keithgantenbein@hotmail.com



Scan code  
for more  
property  
details





**TOTAL: 5052 sq. ft**  
BELOW GROUND: 2446 sq. ft, FLOOR 2: 74 sq. ft, FLOOR 3: 2532 sq. ft, FLOOR 4: 0 sq. ft  
EXCLUDED AREAS: GARAGE: 2822 sq. ft, PATIO: 426 sq. ft, PORCH: 519 sq. ft,  
OPEN TO BELOW: 1857 sq. ft, STORAGE: 395 sq. ft

Floor Plan Created By V1photos.com, Measurements Deamed Highly Reliable But Not Guaranteed.



Disclaimer: Sizes and Dimensions are Approximate, Actual May Vary.



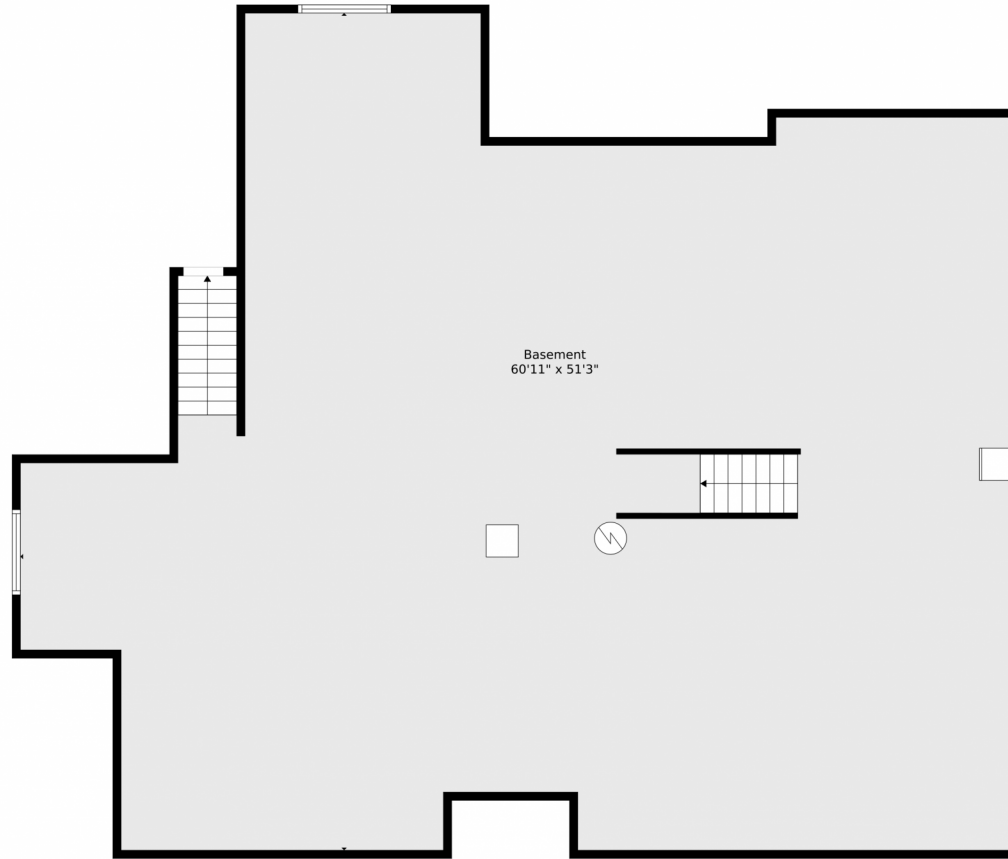
**Keith Gantenbein**  
303-947-5213  
keithgantenbein@hotmail.com



Scan code  
for more  
property  
details



5365 Eldridge Street, Arvada, CO 80002 – Lower Level



**TOTAL: 5052 sq. ft**  
BELOW GROUND: 2446 sq. ft, FLOOR 2: 74 sq. ft, FLOOR 3: 2532 sq. ft, FLOOR 4: 0 sq. ft  
EXCLUDED AREAS: GARAGE: 2822 sq. ft, PATIO: 426 sq. ft, PORCH: 519 sq. ft,  
OPEN TO BELOW: 1857 sq. ft, STORAGE: 395 sq. ft

Floor Plan Created By V1photos.com, Measurements Deamed Highly Reliable But Not Guaranteed.



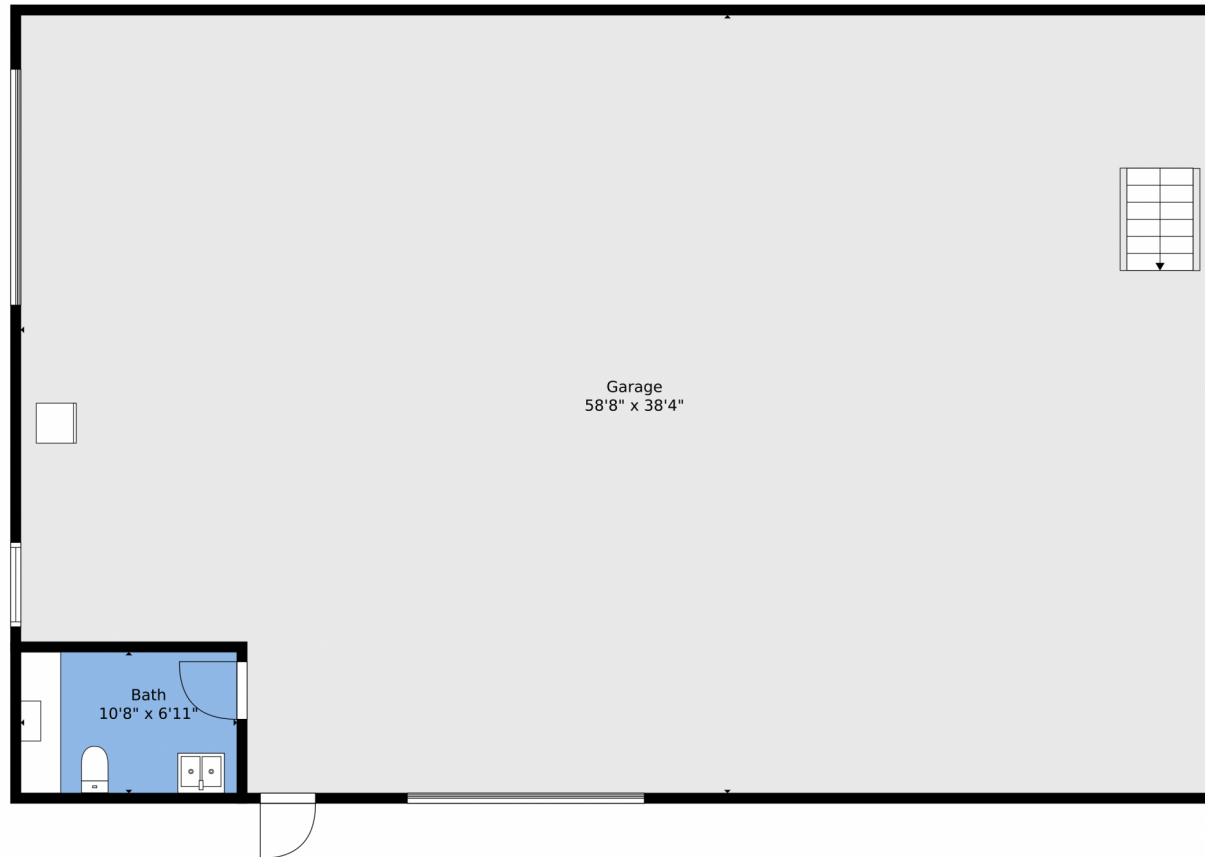
Disclaimer: Sizes and Dimensions are Approximate, Actual May Vary.



**Keith Gantenbein**  
303-947-5213  
keithgantenbein@hotmail.com



# 5365 Eldridge Street, Arvada, CO 80002 – Detached Garage



**TOTAL: 5052 sq. ft**  
BELOW GROUND: 2446 sq. ft, FLOOR 2: 74 sq. ft, FLOOR 3: 2532 sq. ft, FLOOR 4: 0 sq. ft  
EXCLUDED AREAS: GARAGE: 2822 sq. ft, PATIO: 426 sq. ft, PORCH: 519 sq. ft,  
OPEN TO BELOW: 1857 sq. ft, STORAGE: 395 sq. ft

Floor Plan Created By V1photos.com, Measurements Deamed Highly Reliable But Not Guaranteed.



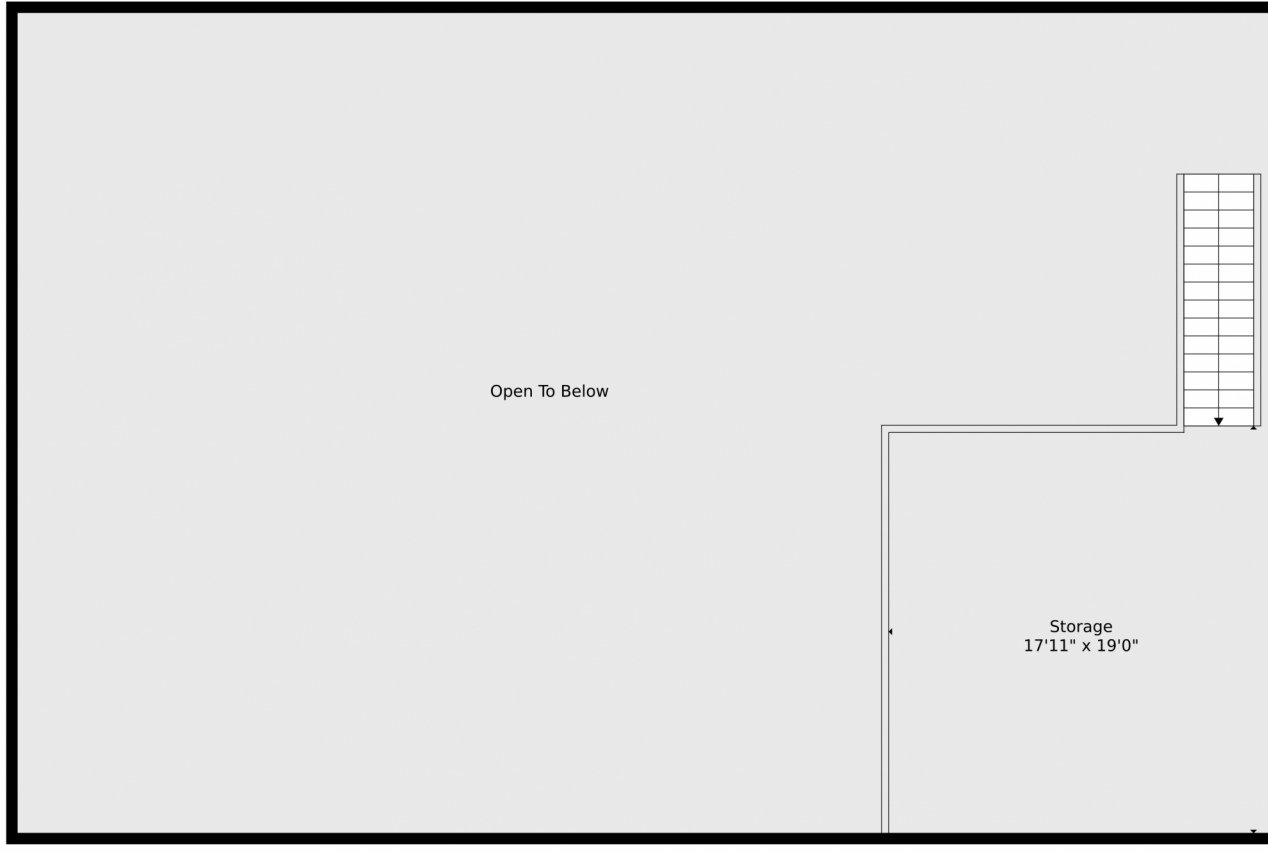
Disclaimer: Sizes and Dimensions are Approximate, Actual May Vary.



**Keith Gantenbein**  
303-947-5213  
keithgantenbein@hotmail.com



# 5365 Eldridge Street, Arvada, CO 80002 – Detached Garage



**TOTAL: 5052 sq. ft**  
BELOW GROUND: 2446 sq. ft, FLOOR 2: 74 sq. ft, FLOOR 3: 2532 sq. ft, FLOOR 4: 0 sq. ft  
EXCLUDED AREAS: GARAGE: 2822 sq. ft, PATIO: 426 sq. ft, PORCH: 519 sq. ft,  
OPEN TO BELOW: 1857 sq. ft, STORAGE: 395 sq. ft

Floor Plan Created By V1photos.com. Measurements Deamed Highly Reliable But Not Guaranteed.



Disclaimer: Sizes and Dimensions are Approximate, Actual May Vary.



**Keith Gantenbein**  
303-947-5213  
keithgantenbein@hotmail.com



# 5365 Eldridge Street, Arvada, CO 80002 – All Levels



**TOTAL: 5052 sq. ft**  
 BELOW GROUND: 2446 sq. ft, FLOOR 2: 74 sq. ft, FLOOR 3: 2532 sq. ft, FLOOR 4: 0 sq. ft  
 EXCLUDED AREAS: GARAGE: 2822 sq. ft, PATIO: 426 sq. ft, PORCH: 519 sq. ft,  
 OPEN TO BELOW: 1857 sq. ft, STORAGE: 395 sq. ft

Floor Plan Created By V1photos.com, Measurements Deamed Highly Reliable But Not Guaranteed.



Disclaimer: Sizes and Dimensions are Approximate, Actual May Vary.



**Keith Gantenbein**  
 303-947-5213  
 keithgantenbein@hotmail.com



Scan code  
 for more  
 property  
 details

