

JUST REDUCED! CORNER UNIT! POOLSIDE, 2nd FLOOR!



Condominium



678 SQFT



2 Beds



1 Baths

PROPERTY DETAILS

Discover your POOLSIDE paradise at Oakland East Manors in Oakland Park, FL. This 2-Bedroom, 1-Bathroom Condo on the Second Floor is Completely Renovated, featuring an Expanded Kitchen with rare Granite Countertops, Custom Cabinets with Hidden Drawers, 2021 Stainless Steel Appliances, LED lighting and NEST AC control. FURNITURE NEGOTIABLE! The Upgraded Electrical, 2019 AC and 2021 Water Heater ensure modern convenience. The spa-like bathroom boasts Ceramic Tile, a Glass-Enclosed Shower with a Slotted Drain. Impact Windows offer Panoramic Views facing East, South & West, showcasing AMAZING POOL, SUNRISE & SUNSET VIEWS. Enjoy vibrant nearby shopping, dining, coffee, groceries, movies, airport, Wilton Manors, Las Olas, Fort Lauderdale & More! This is the lifestyle you deserve! WELCOME HOME!



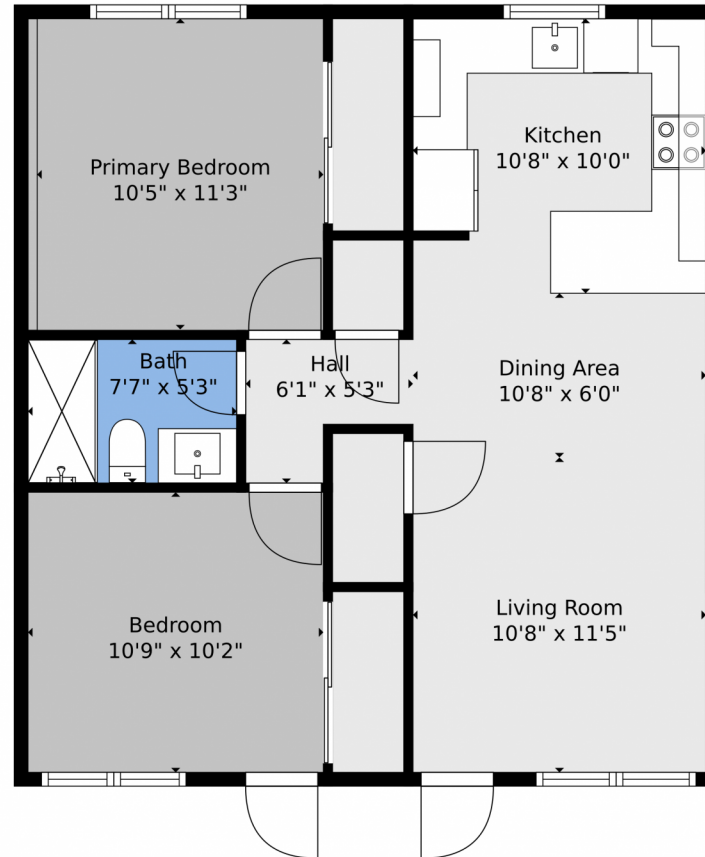
Kevin O'Neil
954-857-3119
kevinoneilrealtor@gmail.com
<https://www.kevin-oneil.com>



Scan code
for more
property
details



1581 Northeast 34th Court, Oakland Park, FL 33334 — Main Level



TOTAL: 673 sq. ft
FLOOR 1: 673 sq. ft

Floor Plan Created By V1photos.com, Measurements Deamed Highly Reliable But Not Guaranteed.



Disclaimer: Sizes and Dimensions are Approximate, Actual May Vary.



Kevin O'Neil
954-857-3119
kevinoneilrealtor@gmail.com
<https://www.kevin-oneil.com>

