

Commercial



2328 SQFT



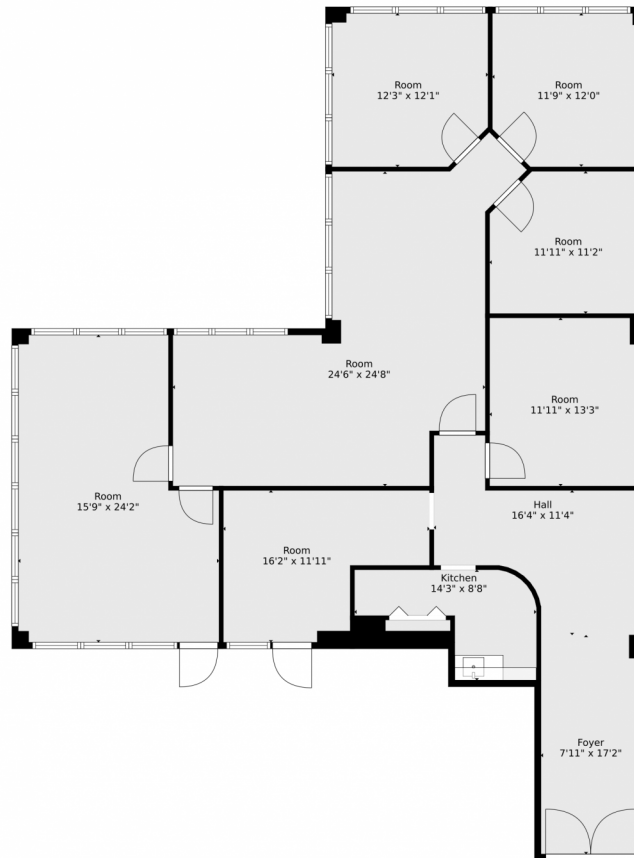
Andrew Hulik
561-839-0371
ahulik@sispropfl.com



Scan code
for more
property
details



7000 West Palmetto Park Road, Boca Raton, FL 33433 — Main Level



TOTAL: 1936 sq. ft
FLOOR 1: 1936 sq. ft
EXCLUDED AREAS: UNDEFINED: 13 sq. ft

Floor Plan Created By V1photos.com, Measurements Deamed Highly Reliable But Not Guaranteed.



Disclaimer: Sizes and Dimensions are Approximate, Actual May Vary.



Andrew Hulik
561-839-0371
ahulik@sispropfl.com

