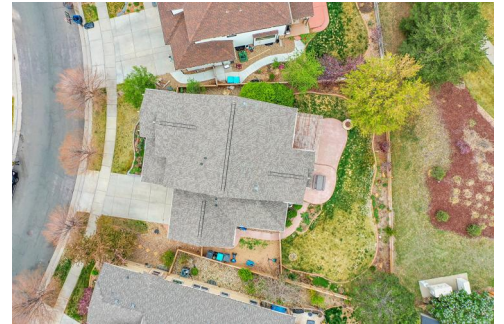




15767 East 109th Avenue
Commerce City, CO 80022
COMMUNITY: Reunion

MLS # 2059393



Single Family



2608 SQFT



3 Beds



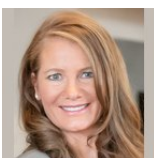
2/1 Baths



3 Car



0.19 Acre



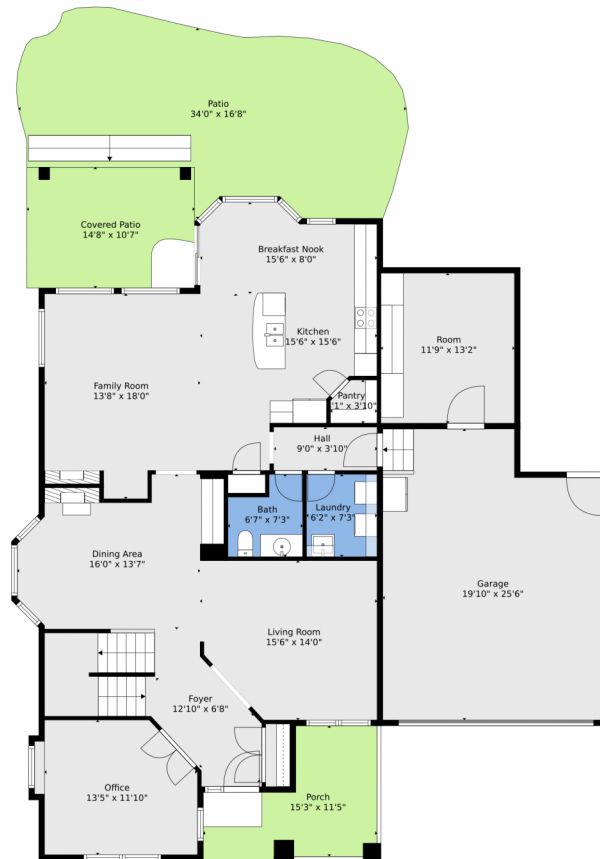
Christina Kern
303-915-0809
ckernsells@gmail.com



Scan code
for more
property
details



15767 East 109th Avenue, Commerce City, CO 80022 — Main

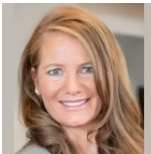


TOTAL: 2822 sq. ft

BELOW GROUND: 0 sq. ft, FLOOR 2: 1584 sq. ft, FLOOR 3: 1238 sq. ft
EXCLUDED AREAS: BASEMENT: 1291 sq. ft, GARAGE: 471 sq. ft, PATIO: 460 sq. ft,
COVERED PATIO: 156 sq. ft, PORCH: 130 sq. ft, OPEN TO BELOW: 180 sq. ft

Floor Plan Created By V1photos.com, Measurements Deamed Highly Reliable But Not Guaranteed.

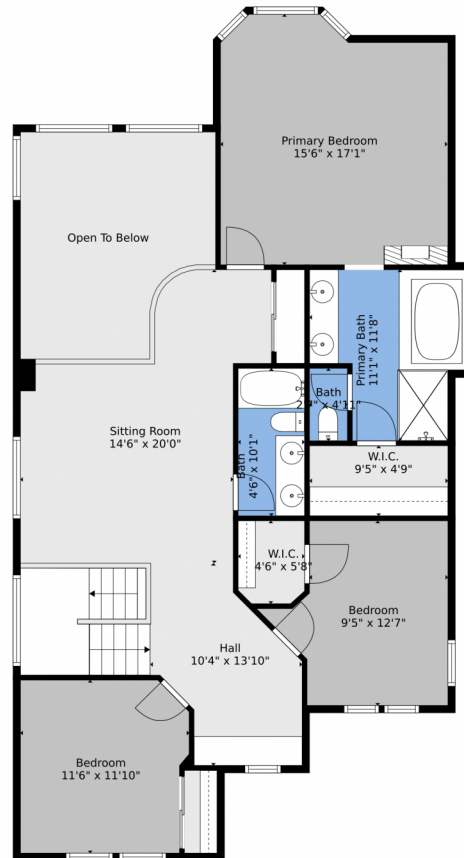
Disclaimer: Sizes and Dimensions are Approximate, Actual May Vary.



Christina Kern
303-915-0809
ckernsells@gmail.com



15767 East 109th Avenue, Commerce City, CO 80022 – 2nd Level

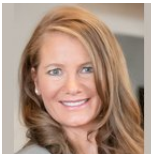


TOTAL: 2822 sq. ft
BELOW GROUND: 0 sq. ft, FLOOR 2: 1584 sq. ft, FLOOR 3: 1238 sq. ft
EXCLUDED AREAS: BASEMENT: 1291 sq. ft, GARAGE: 471 sq. ft, PATIO: 460 sq. ft,
COVERED PATIO: 156 sq. ft, PORCH: 130 sq. ft, OPEN TO BELOW: 180 sq. ft

Floor Plan Created By V1photos.com, Measurements Deamed Highly Reliable But Not Guaranteed.



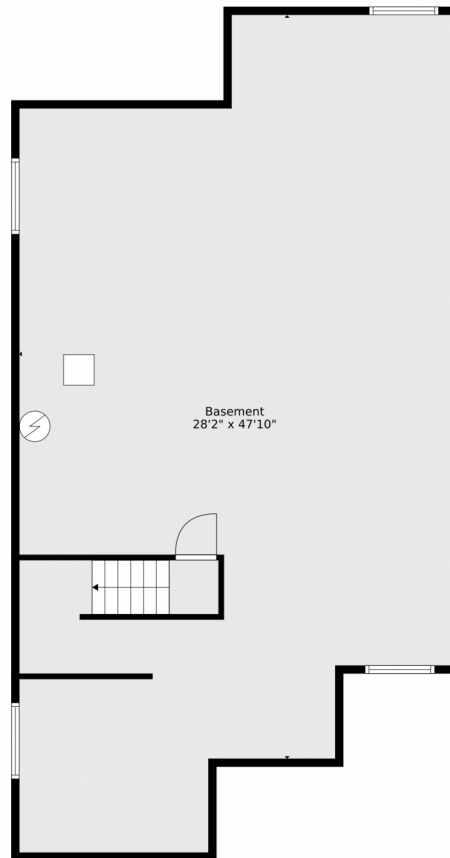
Disclaimer: Sizes and Dimensions are Approximate, Actual May Vary.



Christina Kern
303-915-0809
ckernsells@gmail.com



15767 East 109th Avenue, Commerce City, CO 80022 — Basement



TOTAL: 2822 sq. ft
BELOW GROUND: 0 sq. ft, FLOOR 2: 1584 sq. ft, FLOOR 3: 1238 sq. ft
EXCLUDED AREAS: BASEMENT: 1291 sq. ft, GARAGE: 471 sq. ft, PATIO: 460 sq. ft,
COVERED PATIO: 156 sq. ft, PORCH: 130 sq. ft, OPEN TO BELOW: 180 sq. ft
Floor Plan Created By V1photos.com, Measurements Deamed Highly Reliable But Not Guaranteed.



Disclaimer: Sizes and Dimensions are Approximate, Actual May Vary.

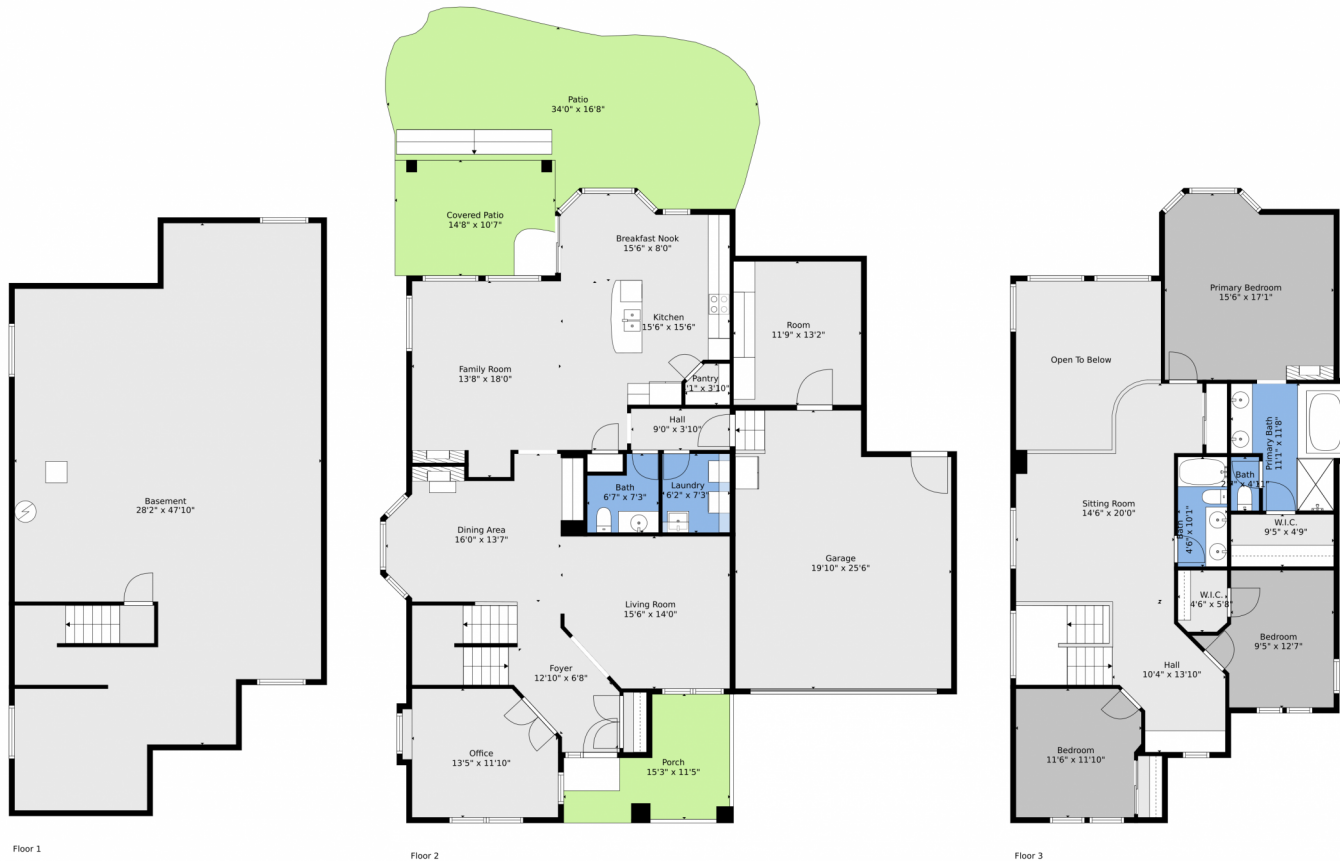


Christina Kern
303-915-0809
ckernsells@gmail.com



Scan code
for more
property
details

15767 East 109th Avenue, Commerce City, CO 80022 — All Levels

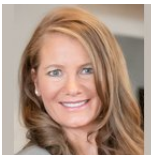


TOTAL: 2822 sq. ft
 BELOW GROUND: 0 sq. ft, FLOOR 2: 1584 sq. ft, FLOOR 3: 1238 sq. ft
 EXCLUDED AREAS: BASEMENT: 1291 sq. ft, GARAGE: 471 sq. ft, PATIO: 460 sq. ft,
 COVERED PATIO: 156 sq. ft, PORCH: 130 sq. ft, OPEN TO BELOW: 180 sq. ft

Floor Plan Created By V1photos.com, Measurements Deamed Highly Reliable But Not Guaranteed.



Disclaimer: Sizes and Dimensions are Approximate, Actual May Vary.



Christina Kern
 303-915-0809
 ckernsells@gmail.com

