



12873 East 108th Avenue
Commerce City, CO 80022
COMMUNITY: Turnberry

MLS # 5819123
PRICE \$550,000



floorplan_single_2



Single Family



1929 SQFT



3 Beds



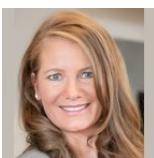
2/1 Baths



2 Car



0.13 Acre



Christina Kern
303-915-0809
ckernsells@gmail.com



Scan code
for more
property
details



12873 East 108th Avenue, Commerce City, CO 80022 — Main

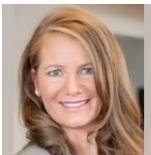


TOTAL: 1789 sq. ft
BELOW GROUND: 0 sq. ft, FLOOR 2: 788 sq. ft, FLOOR 3: 1001 sq. ft
EXCLUDED AREAS: BASEMENT: 728 sq. ft, GARAGE: 400 sq. ft, PORCH: 58 sq. ft,
COVERED PATIO: 259 sq. ft, PATIO: 165 sq. ft

Floor Plan Created By V1photos.com, Measurements Deamed Highly Reliable But Not Guaranteed.



Disclaimer: Sizes and Dimensions are Approximate, Actual May Vary.



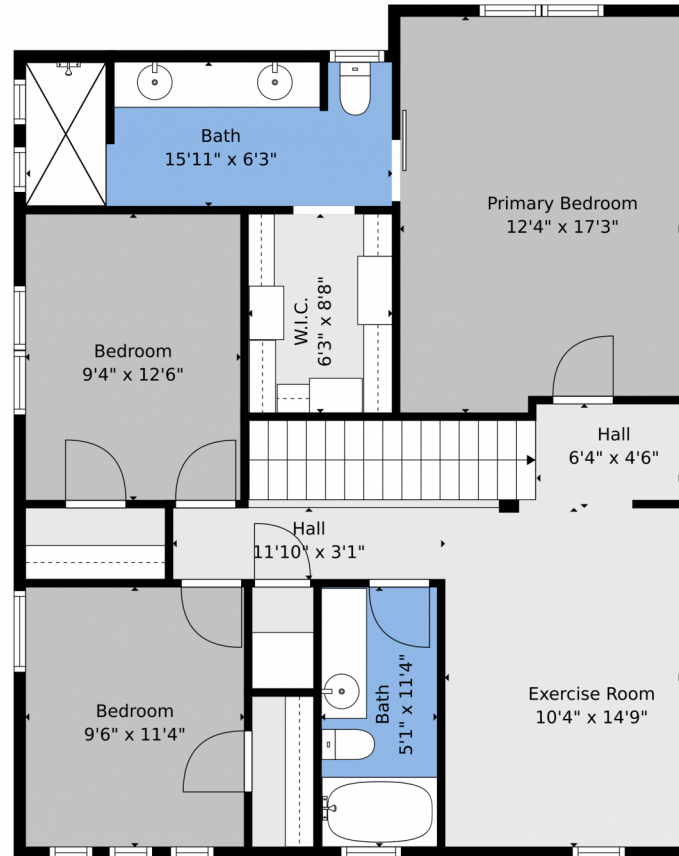
Christina Kern
303-915-0809
ckernsells@gmail.com



Scan code
for more
property
details



12873 East 108th Avenue, Commerce City, CO 80022 — 2nd Level

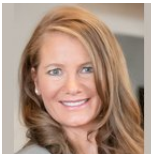


TOTAL: 1789 sq. ft
BELOW GROUND: 0 sq. ft, FLOOR 2: 788 sq. ft, FLOOR 3: 1001 sq. ft
EXCLUDED AREAS: BASEMENT: 728 sq. ft, GARAGE: 400 sq. ft, PORCH: 58 sq. ft,
COVERED PATIO: 259 sq. ft, PATIO: 165 sq. ft

Floor Plan Created By V1photos.com, Measurements Deamed Highly Reliable But Not Guaranteed.



Disclaimer: Sizes and Dimensions are Approximate, Actual May Vary.



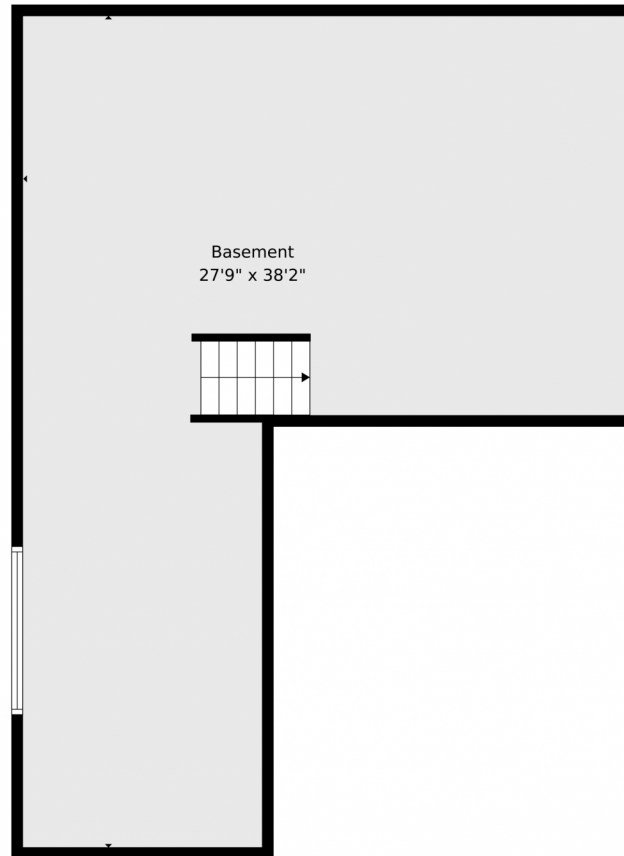
Christina Kern
303-915-0809
ckernsells@gmail.com



Scan code
for more
property
details



12873 East 108th Avenue, Commerce City, CO 80022 — Basement

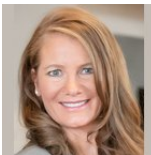


TOTAL: 1789 sq. ft
BELOW GROUND: 0 sq. ft, FLOOR 2: 788 sq. ft, FLOOR 3: 1001 sq. ft
EXCLUDED AREAS: BASEMENT: 728 sq. ft, GARAGE: 400 sq. ft, PORCH: 58 sq. ft,
COVERED PATIO: 259 sq. ft, PATIO: 165 sq. ft

Floor Plan Created By V1photos.com, Measurements Deamed Highly Reliable But Not Guaranteed.



Disclaimer: Sizes and Dimensions are Approximate, Actual May Vary.



Christina Kern
303-915-0809
ckernsells@gmail.com



Scan code
for more
property
details



12873 East 108th Avenue, Commerce City, CO 80022 — All Levels

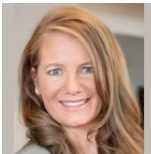


TOTAL: 1789 sq. ft
BELOW GROUND: 0 sq. ft, FLOOR 2: 788 sq. ft, FLOOR 3: 1001 sq. ft
EXCLUDED AREAS: BASEMENT: 728 sq. ft, GARAGE: 400 sq. ft, PORCH: 58 sq. ft,
COVERED PATIO: 259 sq. ft, PATIO: 165 sq. ft

Floor Plan Created By V1photos.com, Measurements Deamed Highly Reliable But Not Guaranteed.



Disclaimer: Sizes and Dimensions are Approximate, Actual May Vary.



Christina Kern
303-915-0809
ckernsells@gmail.com



Scan code
for more
property
details

