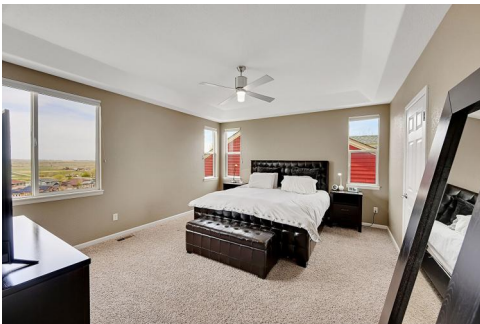


## Stunning Lake and Mountain Views!



Single Family



4234 SQFT



4 Beds



3/1 Baths



3 Car



0.18 Acre

## PROPERTY DETAILS

Welcome to this charming 2-story home in the Village of Five Parks, featuring a walk-out finished basement. The inviting front porch and serene water feature set the tone. Inside, natural light floods the foyer through two-story windows. The living room flows into the family room, offering stunning views of the Flatirons and Standley Lake. The kitchen includes a large island and spacious dining nook. Enjoy sunsets from the expansive upper deck. The main floor also has a formal dining room, powder bath, and a remodeled mud/laundry room. Upstairs, find the primary suite with a remodeled bathroom, a loft, and two bedrooms. The remodeled walk-out basement boasts a great room, wet bar, fourth bedroom, and full bath. Outside, enjoy a covered patio and low-maintenance yard. The 3-car tandem garage offers ample storage. Conveniently located near parks, a pool, and local shops. Don't miss this incredible property!



**Meg Bente**  
720-939-5184  
meg.bente@windermere.com



Scan code  
for more  
property  
details



# 13325 W 86th Drive, Arvada, CO 80005 – All Levels



**TOTAL: 3730 sq. ft**  
BELOW GROUND: 1005 sq. ft, FLOOR 2: 1414 sq. ft, FLOOR 3: 1311 sq. ft  
EXCLUDED AREAS: COVERED PATIO: 770 sq. ft, STORAGE: 357 sq. ft, GARAGE: 596 sq. ft,  
PORCH: 281 sq. ft, DECK: 399 sq. ft, OPEN TO BELOW: 585 sq. ft,  
BAY WINDOW: 4 sq. ft

Floor Plan Created By V1photos.com, Measurements Deamed Highly Reliable But Not Guaranteed.



Disclaimer: Sizes and Dimensions are Approximate, Actual May Vary.



**Meg Bente**  
720-939-5184  
meg.bente@windermere.com



Scan code  
for more  
property  
details

