



Single Family



1900 SQFT



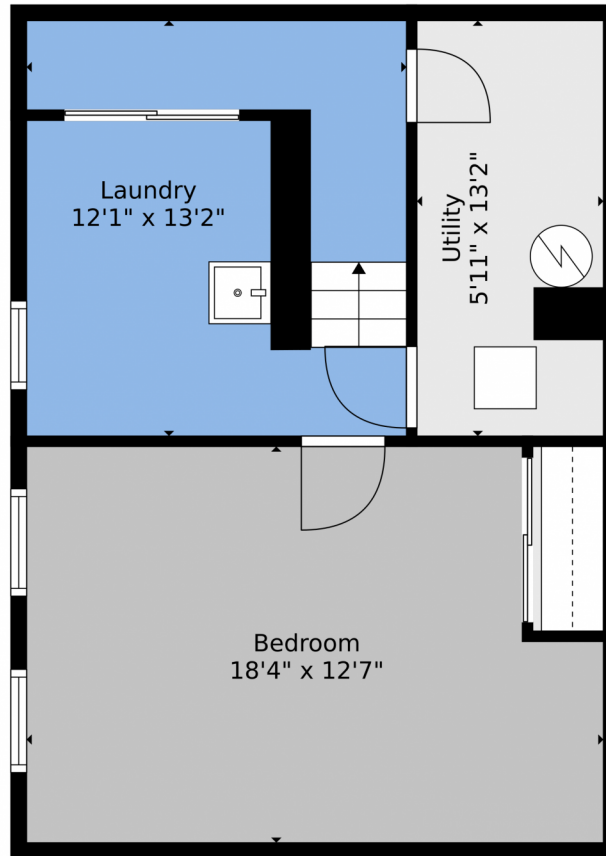
Shawn Kane
720-334-1034
shawn@7281re.com



Scan code
for more
property
details



731 North Foote Avenue, Colorado Springs, CO 80909 — Lower Level



TOTAL: 1601 sq. ft
BELOW GROUND: 237 sq. ft, FLOOR 2: 1364 sq. ft
EXCLUDED AREAS: LAUNDRY: 164 sq. ft, UTILITY: 78 sq. ft, PORCH: 19 sq. ft,
DECK: 116 sq. ft, PATIO: 678 sq. ft

Floor Plan Created By V1photos.com, Measurements Deamed Highly Reliable But Not Guaranteed.



Disclaimer: Sizes and Dimensions are Approximate, Actual May Vary.



Shawn Kane
720-334-1034
shawn@7281re.com



Scan code
for more
property
details



731 North Foote Avenue, Colorado Springs, CO 80909 — Main



TOTAL: 1601 sq. ft
BELOW GROUND: 237 sq. ft, FLOOR 2: 1364 sq. ft
EXCLUDED AREAS: LAUNDRY: 164 sq. ft, UTILITY: 78 sq. ft, PORCH: 19 sq. ft,
DECK: 116 sq. ft, PATIO: 678 sq. ft

Floor Plan Created By V1photos.com, Measurements Deamed Highly Reliable But Not Guaranteed.



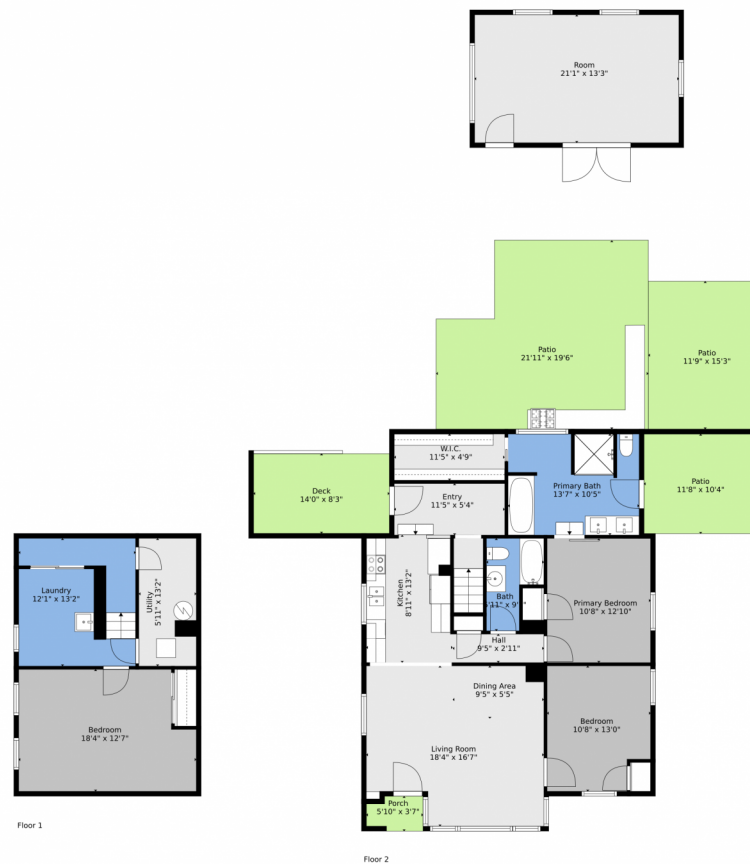
Disclaimer: Sizes and Dimensions are Approximate, Actual May Vary.



Shawn Kane
720-334-1034
shawn@7281re.com



731 North Foote Avenue, Colorado Springs, CO 80909 — All Levels

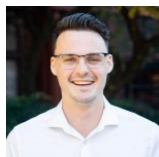


TOTAL: 1601 sq. ft
BELOW GROUND: 237 sq. ft, FLOOR 2: 1364 sq. ft
EXCLUDED AREAS: LAUNDRY: 164 sq. ft, UTILITY: 78 sq. ft, PORCH: 19 sq. ft,
DECK: 116 sq. ft, PATIO: 678 sq. ft

Floor Plan Created By V1photos.com, Measurements Deamed Highly Reliable But Not Guaranteed.



Disclaimer: Sizes and Dimensions are Approximate, Actual May Vary.



Shawn Kane
720-334-1034
shawn@7281re.com



Scan code
for more
property
details

