



1540 Grove Street
Boulder, CO 80302



Multi Family



2210 SQFT



5 Beds



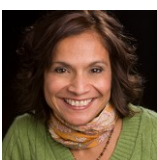
3 Baths



1 Car



0.12 Acre



AJ Chamberlin
303-588-8999
aj@phoenixctd.com



1540 Grove Street, Boulder, CO 80302 — Main



TOTAL: 2062 sq. ft
FLOOR 1: 621 sq. ft, FLOOR 2: 810 sq. ft, FLOOR 3: 631 sq. ft
EXCLUDED AREAS: STORAGE: 68 sq. ft, LAUNDRY: 77 sq. ft, PATIO: 43 sq. ft,
PORCH: 111 sq. ft, DECK: 15 sq. ft, LOW CEILING: 7 sq. ft

Floor Plan Created By V1photos.com, Measurements Deamed Highly Reliable But Not Guaranteed.



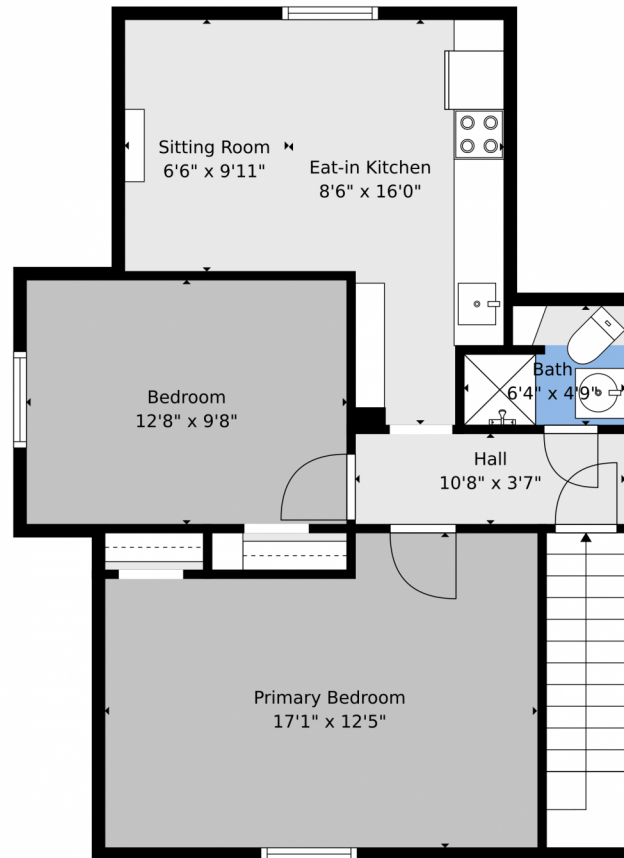
Disclaimer: Sizes and Dimensions are Approximate, Actual May Vary.



AJ Chamberlin
303-588-8999
aj@phoenixctd.com



1540 Grove Street, Boulder, CO 80302 — 2nd Level



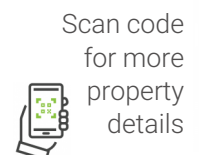
TOTAL: 2062 sq. ft
FLOOR 1: 621 sq. ft, FLOOR 2: 810 sq. ft, FLOOR 3: 631 sq. ft
EXCLUDED AREAS: STORAGE: 68 sq. ft, LAUNDRY: 77 sq. ft, PATIO: 43 sq. ft,
PORCH: 111 sq. ft, DECK: 15 sq. ft, LOW CEILING: 7 sq. ft
Floor Plan Created By V1photos.com, Measurements Deamed Highly Reliable But Not Guaranteed.



Disclaimer: Sizes and Dimensions are Approximate, Actual May Vary.



AJ Chamberlin
303-588-8999
aj@phoenixctd.com



Scan code
for more
property
details



1540 Grove Street, Boulder, CO 80302 — Lower Level



TOTAL: 2062 sq. ft
FLOOR 1: 621 sq. ft, FLOOR 2: 810 sq. ft, FLOOR 3: 631 sq. ft
EXCLUDED AREAS: STORAGE: 68 sq. ft, LAUNDRY: 77 sq. ft, PATIO: 43 sq. ft,
PORCH: 111 sq. ft, DECK: 15 sq. ft, LOW CEILING: 7 sq. ft

Floor Plan Created By V1photos.com, Measurements Deamed Highly Reliable But Not Guaranteed.



Disclaimer: Sizes and Dimensions are Approximate, Actual May Vary.



AJ Chamberlin
303-588-8999
aj@phoenixctd.com



1540 Grove Street, Boulder, CO 80302 — All Levels



TOTAL: 2062 sq. ft
 FLOOR 1: 621 sq. ft, FLOOR 2: 810 sq. ft, FLOOR 3: 631 sq. ft
 EXCLUDED AREAS: STORAGE: 68 sq. ft, LAUNDRY: 77 sq. ft, PATIO: 43 sq. ft,
 PORCH: 111 sq. ft, DECK: 15 sq. ft, LOW CEILING: 7 sq. ft

Floor Plan Created By V1photos.com, Measurements Deamed Highly Reliable But Not Guaranteed.



Disclaimer: Sizes and Dimensions are Approximate, Actual May Vary.



AJ Chamberlin
 303-588-8999
 aj@phoenixctd.com

