



Single Family



2833 SQFT



4 Beds



3/1 Baths



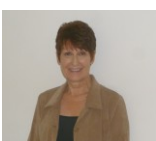
2 Car



0.14 Acre

PROPERTY DETAILS

Welcome Home to the Best Location in Landing at Standley Lake! This Spacious Home Backs to Little Dry Creek Trail and is Just a Few Blocks from Trailhead for Standley Lake at Ward Rd and W 86th PKWY. Engineered Wood Flooring Throughout Main Level and Open Floorplan for Carefree Living is Perfect for Entertaining. Every Room is Flooded with Natural Light from High Quality Jeld-wen Windows installed in 2023. Bay Windows in Living Room, Dining Room, and All Upper Bedrooms-Wall of Windows in Great Room and Kitchen Give a Feeling of Connection with the Backyard Oasis and Inviting Front Porch. Great Room with Vaulted Ceiling and Skylights Features a Beautiful Brick Fireplace that Lends a Cozy Feel to Chilly Winter Days. Finished Lower Level Provides Privacy for your Guests, an In-Law Suite, Movie Room or Office. Cooling is Provided by Thermostat Controlled Rooftop Breezair Evaporative Cooler with Vents into Each Upper Bedroom and Upper Hall/Loft. Covered Brick Patio with Ceiling Fan /Light and Garden Area is One of a Kind. Adorable Play House could also Serve as a Gardening/Potting Shed. The Private and Tranquil Backyard has a Gate to Access Little Dry Creek Greenbelt. Near W 86th PKWY and Alkire ST Enjoy Dining and Fun at Village of Five Parks, Piranhas Swim Club, Rose Roots Community Garden and at Simms and W 84th Ave Michael Northey Park. Don't Miss this Opportunity to Make this Lovely House Your New Home!



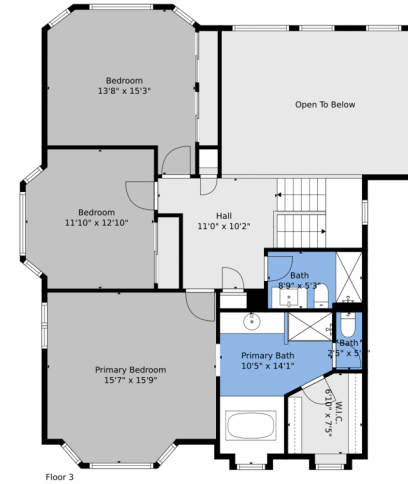
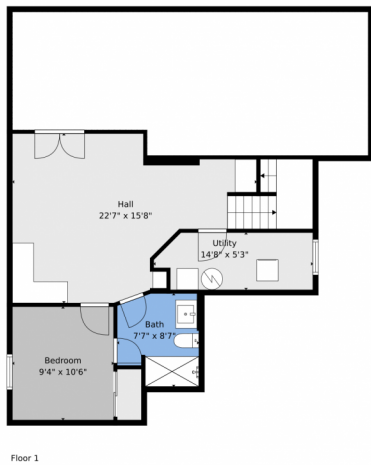
Cyndy Halley
303-548-0151
cyndyhalley@comcast.net



Scan code
for more
property
details



12718 West 84th Drive, Arvada, CO 80005 – All Levels



TOTAL: 2585 sq. ft
BELOW GROUND: 493 sq. ft, FLOOR 2: 1082 sq. ft, FLOOR 3: 1010 sq. ft
EXCLUDED AREAS: UTILITY: 71 sq. ft, LOW CEILING: 407 sq. ft, GARAGE: 425 sq. ft,
PORCH: 213 sq. ft, FIREPLACE: 8 sq. ft, OPEN TO BELOW: 240 sq. ft
Floor Plan Created By V1photos.com, Measurements Deamed Highly Reliable But Not Guaranteed.



Disclaimer: Sizes and Dimensions are Approximate, Actual May Vary.



Cyndy Halley
303-548-0151
cyndyhalley@comcast.net

