



Single Family



1400 SQFT



Rondi DuPont

970-401-0123

[rdupont@thegroupinc.com](mailto:rdupont@thegroupinc.com)

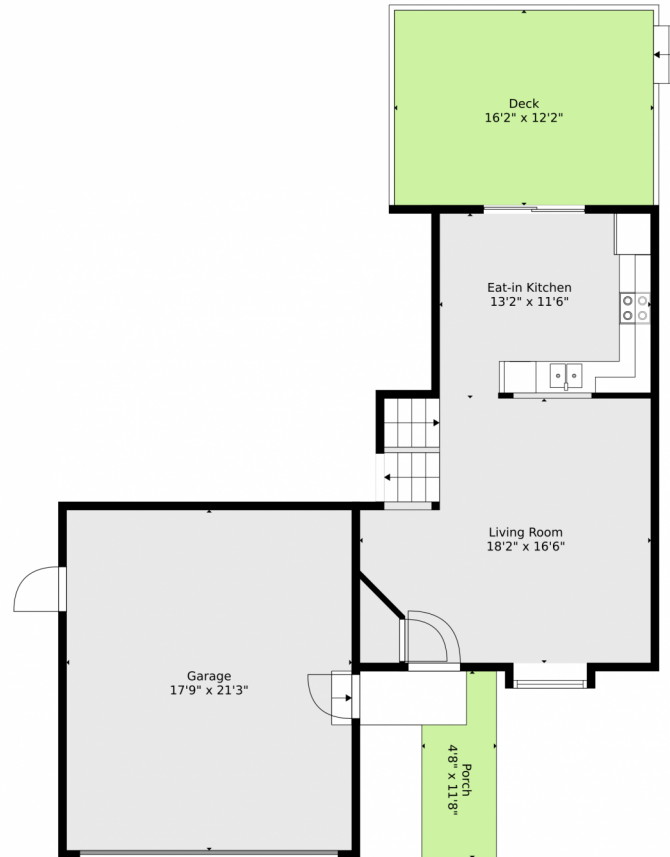
<https://rondidupont.com/>



Scan code  
for more  
property  
details



# 3107 Sharps Street, Fort Collins, CO 80528 — Main



**TOTAL: 1258 sq. ft**  
BELOW GROUND: 409 sq. ft, FLOOR 2: 440 sq. ft, FLOOR 3: 409 sq. ft  
EXCLUDED AREAS: GARAGE: 377 sq. ft, DECK: 196 sq. ft, PORCH: 67 sq. ft,  
BAY WINDOW: 6 sq. ft

Floor Plan Created By V1photos.com, Measurements Deamed Highly Reliable But Not Guaranteed.



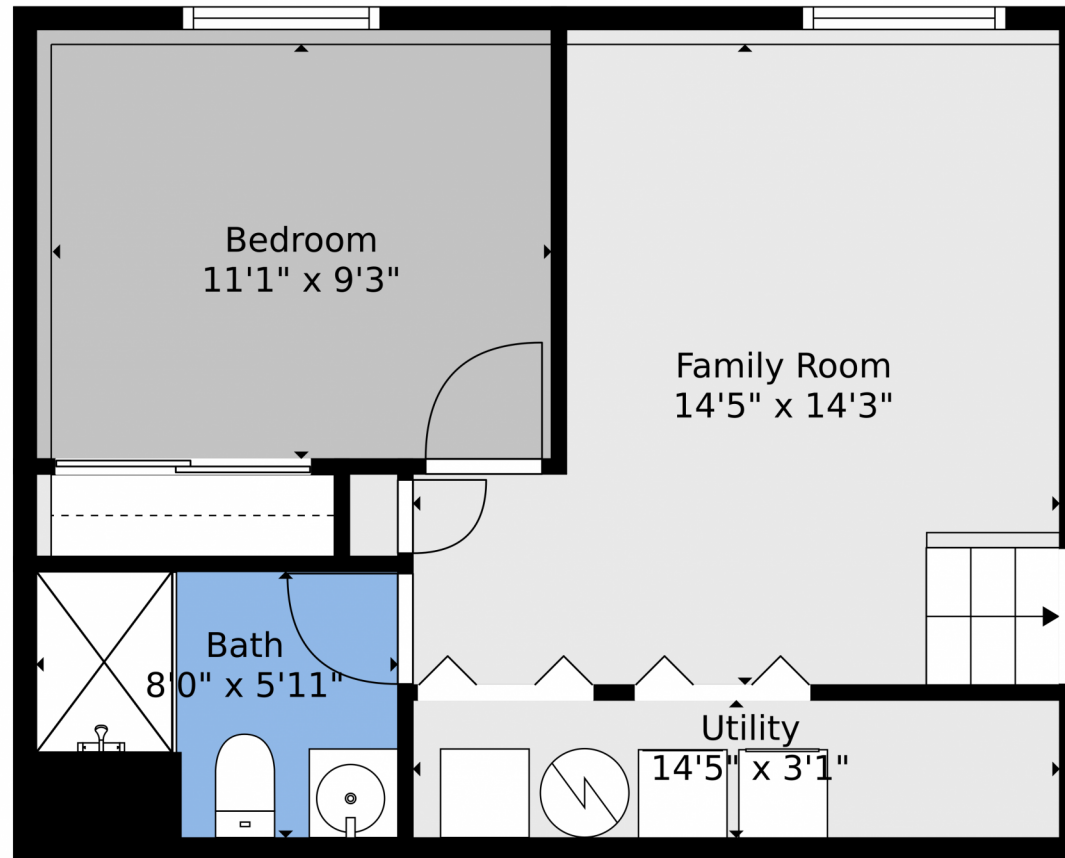
Disclaimer: Sizes and Dimensions are Approximate, Actual May Vary.



**Rondi DuPont**  
970-401-0123  
rdupont@thegroupinc.com  
<https://rondidupont.com/>



## 3107 Sharps Street, Fort Collins, CO 80528 – Basement



**TOTAL: 1258 sq. ft**  
BELOW GROUND: 409 sq. ft, FLOOR 2: 440 sq. ft, FLOOR 3: 409 sq. ft  
EXCLUDED AREAS: GARAGE: 377 sq. ft, DECK: 196 sq. ft, PORCH: 67 sq. ft,  
BAY WINDOW: 6 sq. ft

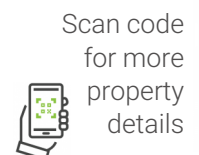
Floor Plan Created By V1photos.com, Measurements Deamed Highly Reliable But Not Guaranteed.



Disclaimer: Sizes and Dimensions are Approximate, Actual May Vary.



**Rondi DuPont**  
970-401-0123  
rdupont@thegroupinc.com  
<https://rondidupont.com/>

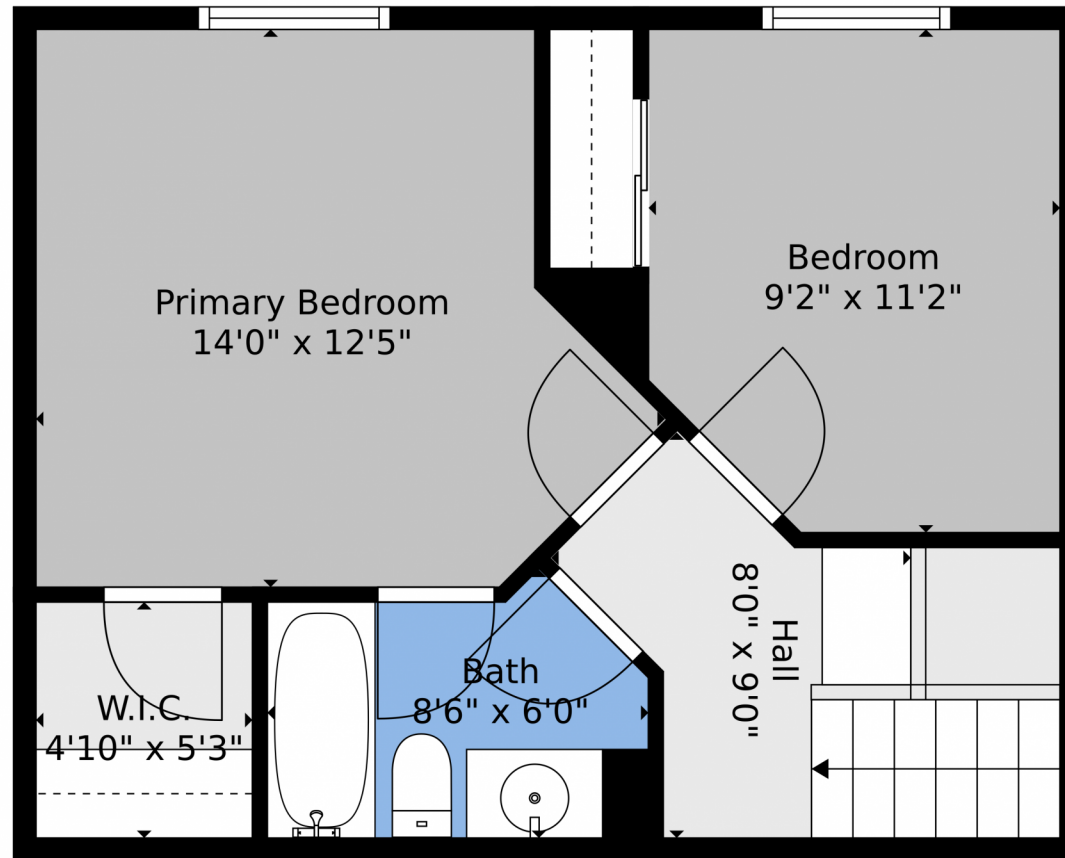


Scan code  
for more  
property  
details





## 3107 Sharps Street, Fort Collins, CO 80528 – 2nd Level



**TOTAL: 1258 sq. ft**  
BELOW GROUND: 409 sq. ft, FLOOR 2: 440 sq. ft, FLOOR 3: 409 sq. ft  
EXCLUDED AREAS: GARAGE: 377 sq. ft, DECK: 196 sq. ft, PORCH: 67 sq. ft,  
BAY WINDOW: 6 sq. ft

Floor Plan Created By V1photos.com, Measurements Deamed Highly Reliable But Not Guaranteed.



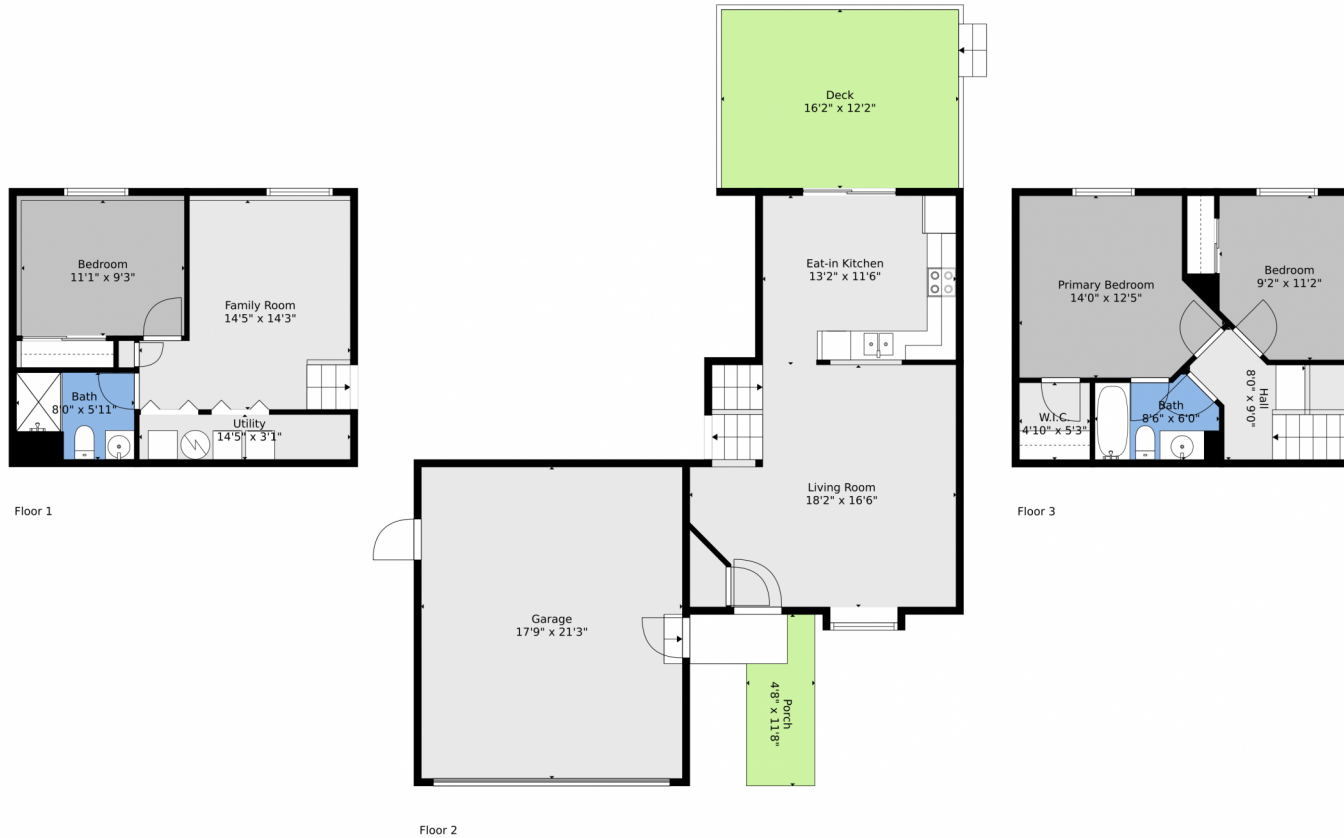
Disclaimer: Sizes and Dimensions are Approximate, Actual May Vary.



**Rondi DuPont**  
970-401-0123  
rdupont@thegroupinc.com  
<https://rondidupont.com/>



# 3107 Sharps Street, Fort Collins, CO 80528 – All Levels



**TOTAL: 1258 sq. ft**  
BELOW GROUND: 409 sq. ft, FLOOR 2: 440 sq. ft, FLOOR 3: 409 sq. ft  
EXCLUDED AREAS: GARAGE: 377 sq. ft, DECK: 196 sq. ft, PORCH: 67 sq. ft,  
BAY WINDOW: 6 sq. ft

Floor Plan Created By V1photos.com, Measurements Deamed Highly Reliable But Not Guaranteed.



Disclaimer: Sizes and Dimensions are Approximate, Actual May Vary.



**Rondi DuPont**  
970-401-0123  
rdupont@thegroupinc.com  
<https://rondidupont.com/>



Scan code  
for more  
property  
details

