



4765 S Garland Street
 Littleton, CO 80123
 COMMUNITY: Village West

MLS # 1032013



Single Family



2203 SQFT



3 Beds



3/1 Baths



2 Car

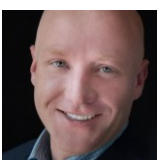


0.24 Acre

PROPERTY DETAILS

Welcome to this move-in ready home located in the heart of Littleton! Boasting 3 generously sized bedrooms upstairs and 4 beautifully appointed bathrooms, this property is perfect for comfortable living and entertaining. The primary bedroom features an updated bathroom and walk-in closet. Recent updates include new carpet, roof replaced in 2023, New A/C in 2022!

The kitchen showcases upgraded cherry cabinets, granite countertops, and stainless-steel appliances, combining style with functionality. The inviting family room centers around a cozy gas fireplace, hardwood floors creating a warm and welcoming atmosphere. The home features an attached 2-car garage, ensuring convenience and ample storage space. Step outside to enjoy the large covered back patio, complete with a charming lounge swing a perfect spot to relax and unwind. Situated close to parks and a recreation center, this home offers easy access to outdoor activities and community amenities. Don't miss the opportunity to own this exceptional property!



Dave Abel
 303-725-0461
 daveabel@boulderco.com



Scan code
 for more
 property
 details





TOTAL: 2119 sq. ft
BELOW GROUND: 411 sq. ft, FLOOR 2: 871 sq. ft, FLOOR 3: 837 sq. ft
EXCLUDED AREAS: UTILITY: 99 sq. ft, GARAGE: 393 sq. ft, PORCH: 79 sq. ft,
COVERED PATIO: 473 sq. ft, FIREPLACE: 13 sq. ft, OPEN TO BELOW: 229 sq. ft
Floor Plan Created By V1photos.com, Measurements Deamed Highly Reliable But Not Guaranteed.



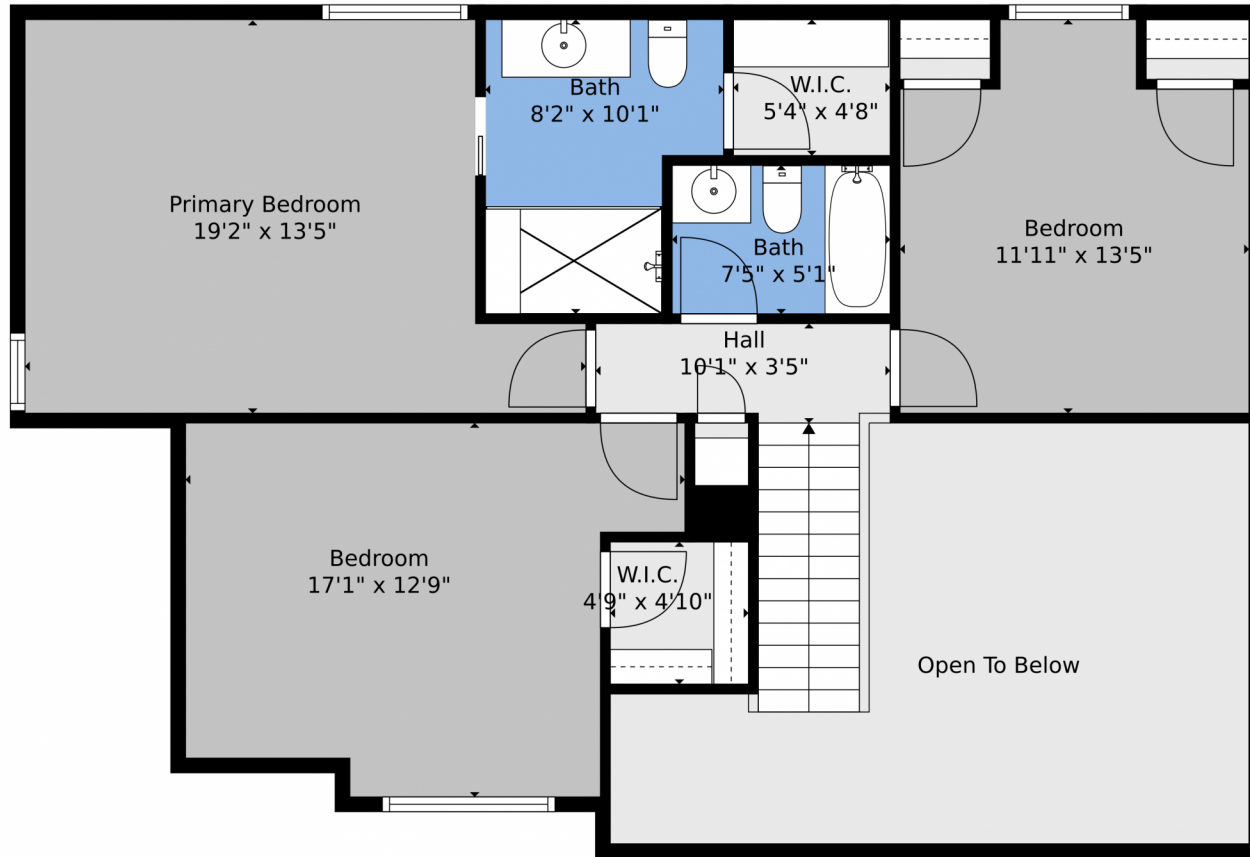
Disclaimer: Sizes and Dimensions are Approximate, Actual May Vary.



Dave Abel
303-725-0461
daveabel@boulderco.com



4765 S Garland Street, Littleton, CO 80123 – 2nd Level



TOTAL: 2119 sq. ft
BELOW GROUND: 411 sq. ft, FLOOR 2: 871 sq. ft, FLOOR 3: 837 sq. ft
EXCLUDED AREAS: UTILITY: 99 sq. ft, GARAGE: 393 sq. ft, PORCH: 79 sq. ft,
COVERED PATIO: 473 sq. ft, FIREPLACE: 13 sq. ft, OPEN TO BELOW: 229 sq. ft
Floor Plan Created By V1photos.com, Measurements Deamed Highly Reliable But Not Guaranteed.

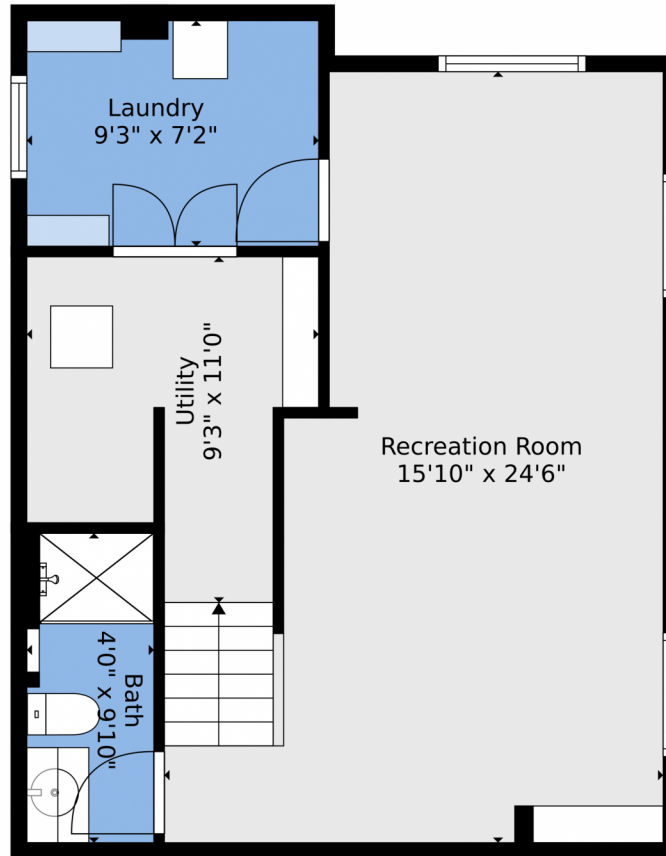


Disclaimer: Sizes and Dimensions are Approximate, Actual May Vary.



Dave Abel
303-725-0461
daveabel@boulderco.com





TOTAL: 2119 sq. ft
BELOW GROUND: 411 sq. ft, FLOOR 2: 871 sq. ft, FLOOR 3: 837 sq. ft
EXCLUDED AREAS: UTILITY: 99 sq. ft, GARAGE: 393 sq. ft, PORCH: 79 sq. ft,
COVERED PATIO: 473 sq. ft, FIREPLACE: 13 sq. ft, OPEN TO BELOW: 229 sq. ft
Floor Plan Created By V1photos.com, Measurements Deamed Highly Reliable But Not Guaranteed.



Disclaimer: Sizes and Dimensions are Approximate, Actual May Vary.



Dave Abel
303-725-0461
daveabel@boulderco.com



4765 S Garland Street, Littleton, CO 80123 – All Levels



TOTAL: 2119 sq. ft
BELOW GROUND: 411 sq. ft, FLOOR 2: 871 sq. ft, FLOOR 3: 837 sq. ft
EXCLUDED AREAS: UTILITY: 99 sq. ft, GARAGE: 393 sq. ft, PORCH: 79 sq. ft,
COVERED PATIO: 473 sq. ft, FIREPLACE: 13 sq. ft, OPEN TO BELOW: 229 sq. ft

Floor Plan Created By V1photos.com, Measurements Deamed Highly Reliable But Not Guaranteed.

Disclaimer: Sizes and Dimensions are Approximate, Actual May Vary.



Dave Abel
303-725-0461
daveabel@boulderco.com

