



5103 West 12th Street  
Greeley, CO 80634  
COMMUNITY: Country Club West



Single Family



3850 SQFT



4 Beds



3 Baths



3 Car



0.26 Acre



**Brian Franzen**  
970-301-0266  
brian@briansellsnoco.com



Scan code  
for more  
property  
details



# 5103 West 12th Street, Greeley, CO 80634 — Main



**TOTAL: 2372 sq. ft**  
BELOW GROUND: 439 sq. ft, FLOOR 2: 1933 sq. ft  
EXCLUDED AREAS: BASEMENT: 1240 sq. ft, DECK: 340 sq. ft, PATIO: 119 sq. ft,  
PORCH: 71 sq. ft, GARAGE: 626 sq. ft, FIREPLACE: 11 sq. ft

Floor Plan Created By V1photos.com, Measurements Deamed Highly Reliable But Not Guaranteed.



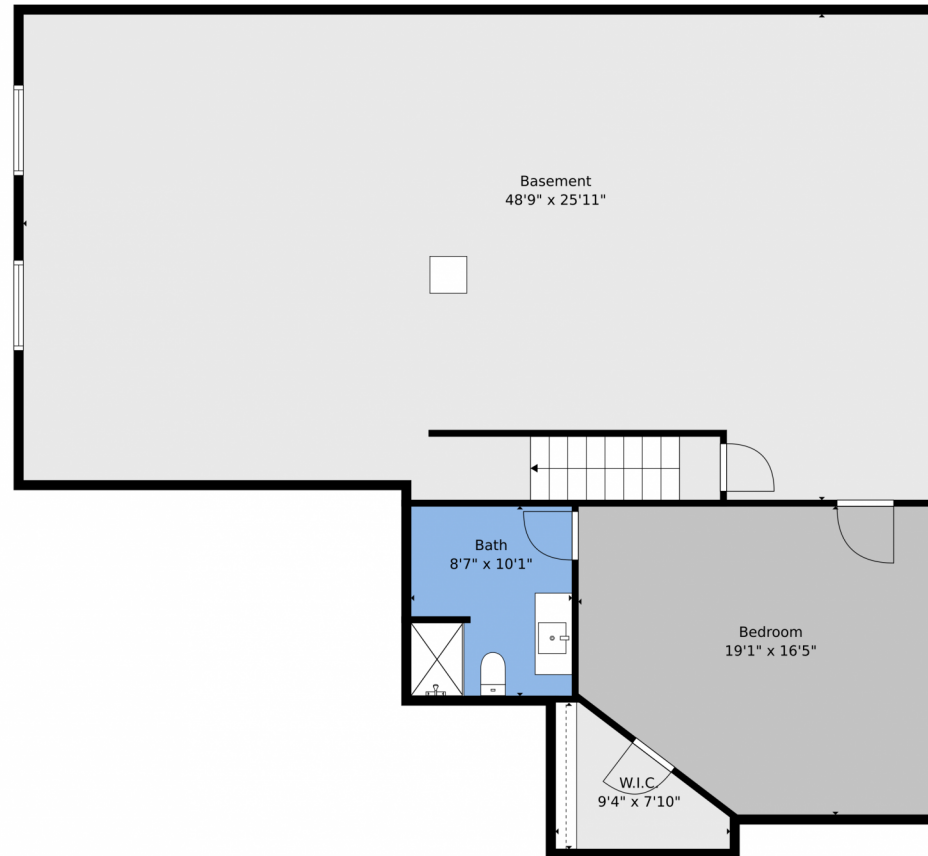
Disclaimer: Sizes and Dimensions are Approximate, Actual May Vary.



**Brian Franzen**  
970-301-0266  
brian@briansellsnoco.com



## 5103 West 12th Street, Greeley, CO 80634 — Basement



**TOTAL: 2372 sq. ft**  
BELOW GROUND: 439 sq. ft, FLOOR 2: 1933 sq. ft  
EXCLUDED AREAS: BASEMENT: 1240 sq. ft, DECK: 340 sq. ft, PATIO: 119 sq. ft,  
PORCH: 71 sq. ft, GARAGE: 626 sq. ft, FIREPLACE: 11 sq. ft

Floor Plan Created By V1photos.com, Measurements Deamed Highly Reliable But Not Guaranteed.



Disclaimer: Sizes and Dimensions are Approximate, Actual May Vary.



**Brian Franzen**  
970-301-0266  
brian@briansellsnoco.com



Scan code  
for more  
property  
details



# 5103 West 12th Street, Greeley, CO 80634 — All Levels



**TOTAL: 2372 sq. ft**  
BELOW GROUND: 439 sq. ft, FLOOR 2: 1933 sq. ft  
EXCLUDED AREAS: BASEMENT: 1240 sq. ft, DECK: 340 sq. ft, PATIO: 119 sq. ft,  
PORCH: 71 sq. ft, GARAGE: 626 sq. ft, FIREPLACE: 11 sq. ft

Floor Plan Created By V1photos.com, Measurements Deamed Highly Reliable But Not Guaranteed.



Disclaimer: Sizes and Dimensions are Approximate, Actual May Vary.



**Brian Franzen**  
970-301-0266  
brian@briansellsnoco.com



Scan code  
for more  
property  
details

