



Single Family



3482 SQFT



4 Beds



3 Baths



4 Car

PROPERTY DETAILS

A Rare Gem - Country Living in Town

This beautifully maintained two-story Victorian home sits on a 0.77-acre corner lot, blending timeless charm with modern comfort. It features four bedrooms and three baths, showcasing quality craftsmanship. Elegant hardwood floors and classic trim enhance the main level, while original stained glass doors and granite countertops add character. A cozy gas fireplace warms the inviting living area, and newer carpet upgrades the upstairs and office. Recent updates include a new furnace (2024) for peace of mind. The expansive four-car detached garage offers convenience and storage, and the lovely yard features mature trees and shrubs. This exceptional property is a must-see!



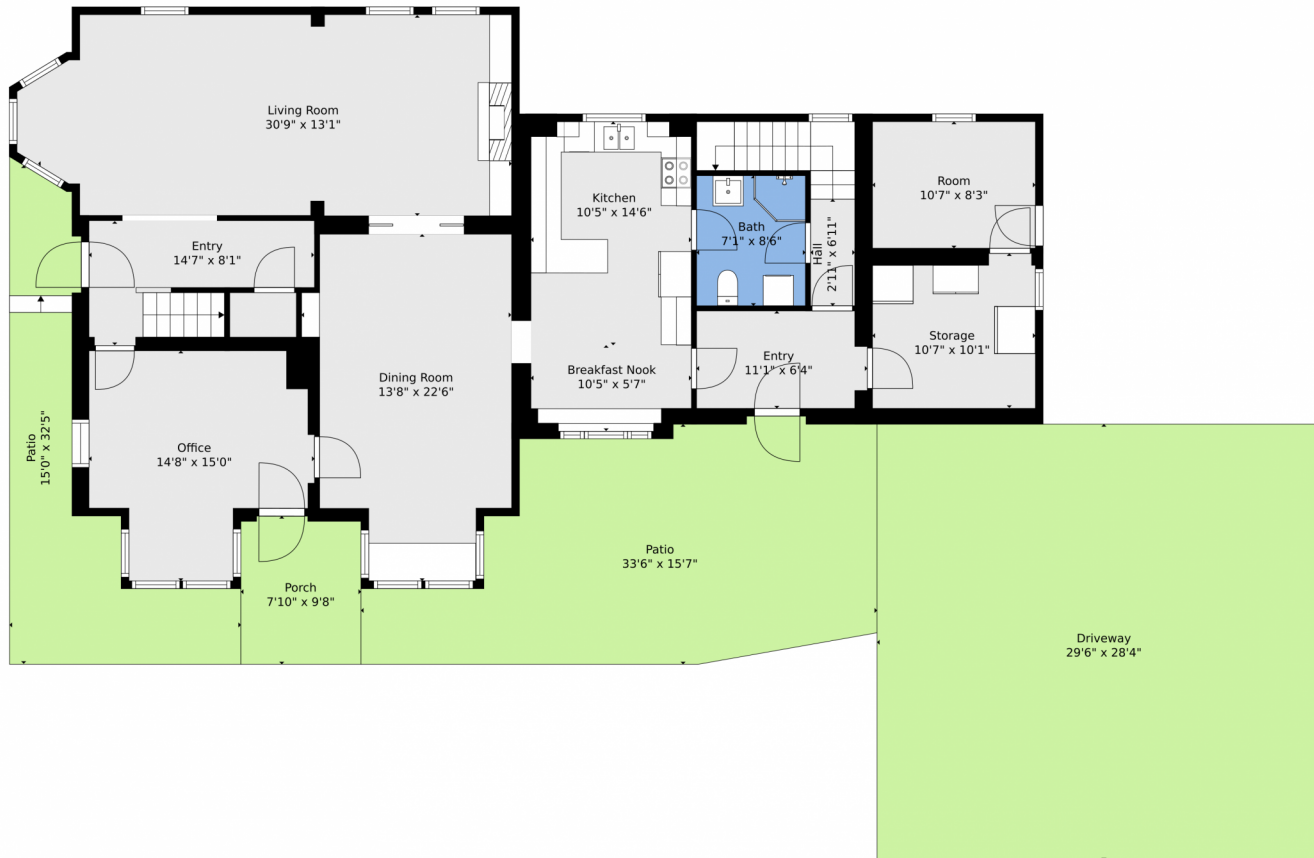
Suzanne Ekeler
970-590-4841
suzanne.ekeler@windermere.com



Scan code
for more
property
details



807 Collins Street, Eaton, CO 80615 – Main



TOTAL: 2857 sq. ft
FLOOR 1: 1529 sq. ft, FLOOR 2: 0 sq. ft, FLOOR 3: 1328 sq. ft
EXCLUDED AREAS: STORAGE: 101 sq. ft, DRIVEWAY: 836 sq. ft, PATIO: 605 sq. ft,
PORCH: 74 sq. ft, GARAGE: 923 sq. ft

Floor Plan Created By V1photos.com, Measurements Deamed Highly Reliable But Not Guaranteed.



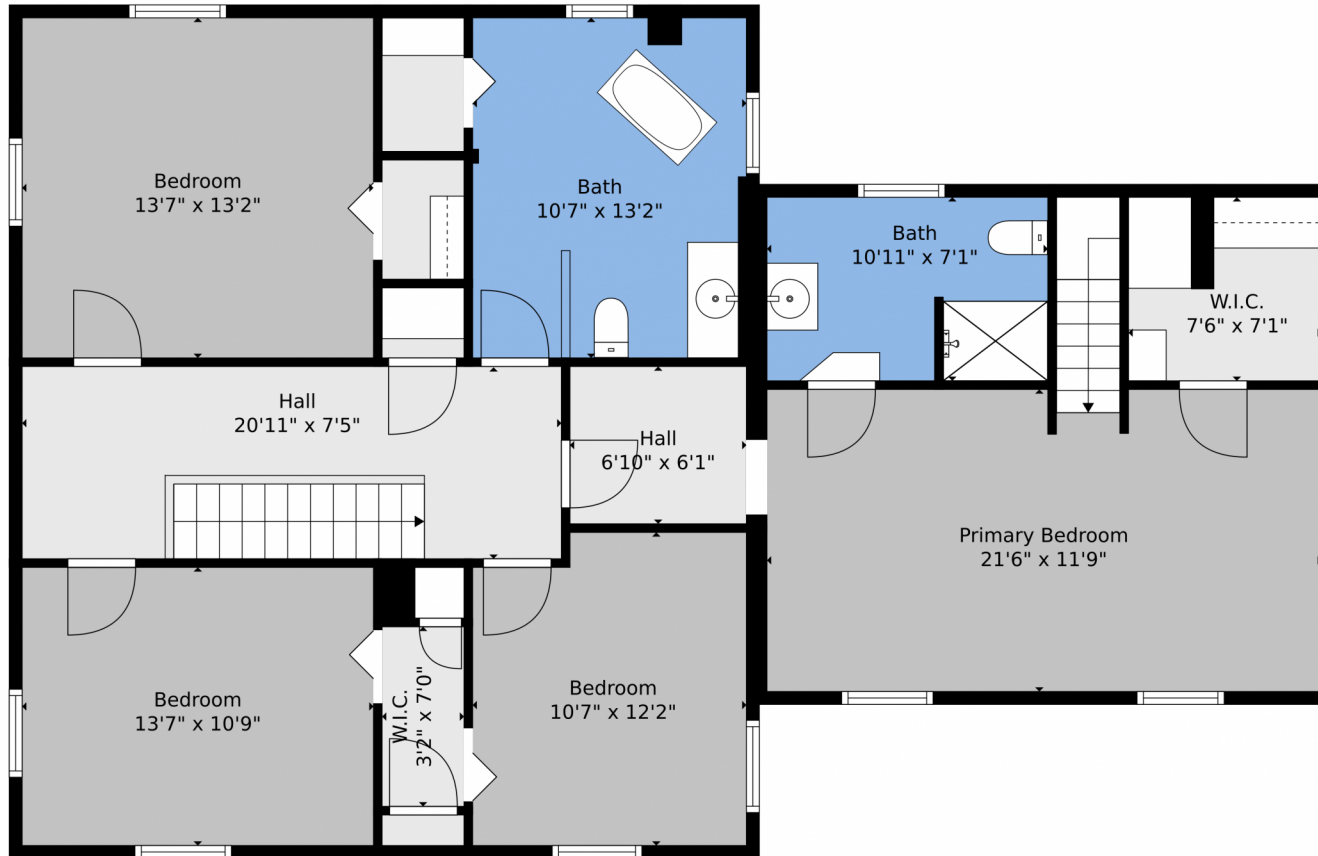
Disclaimer: Sizes and Dimensions are Approximate, Actual May Vary.



Suzanne Ekeler
970-590-4841
suzanne.ekeler@windermere.com



807 Collins Street, Eaton, CO 80615 – 2nd Level



TOTAL: 2857 sq. ft
FLOOR 1: 1529 sq. ft, FLOOR 2: 0 sq. ft, FLOOR 3: 1328 sq. ft
EXCLUDED AREAS: STORAGE: 101 sq. ft, DRIVEWAY: 836 sq. ft, PATIO: 605 sq. ft,
PORCH: 74 sq. ft, GARAGE: 923 sq. ft

Floor Plan Created By V1photos.com, Measurements Deamed Highly Reliable But Not Guaranteed.



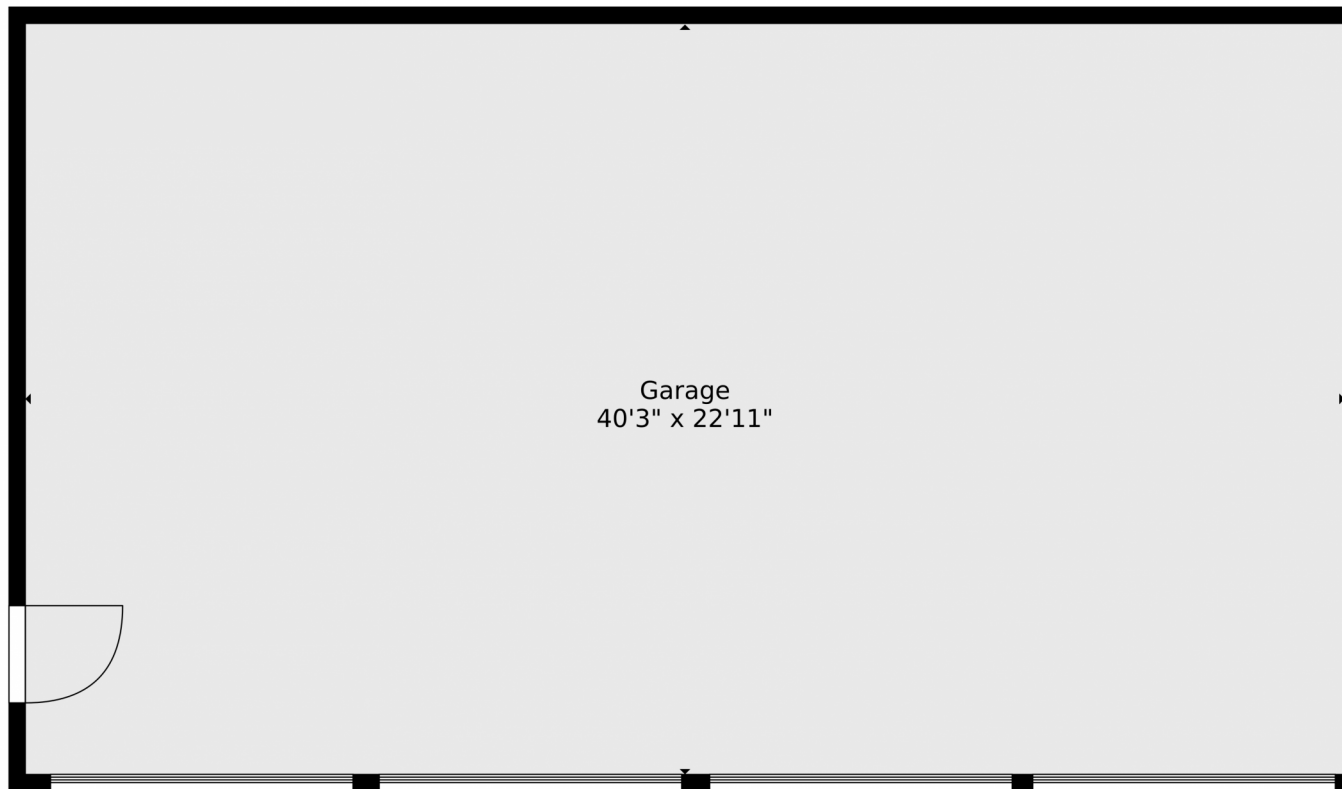
Disclaimer: Sizes and Dimensions are Approximate, Actual May Vary.



Suzanne Ekeler
970-590-4841
suzanne.ekeler@windermere.com



807 Collins Street, Eaton, CO 80615 — Detached Garage



TOTAL: 2857 sq. ft
FLOOR 1: 1529 sq. ft, FLOOR 2: 0 sq. ft, FLOOR 3: 1328 sq. ft
EXCLUDED AREAS: STORAGE: 101 sq. ft, DRIVEWAY: 836 sq. ft, PATIO: 605 sq. ft,
PORCH: 74 sq. ft, GARAGE: 923 sq. ft

Floor Plan Created By V1photos.com, Measurements Deamed Highly Reliable But Not Guaranteed.



Disclaimer: Sizes and Dimensions are Approximate, Actual May Vary.



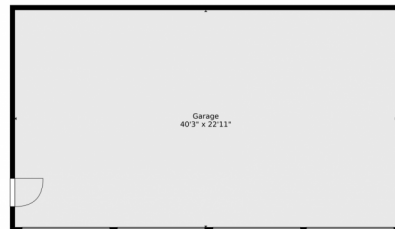
Suzanne Ekeler
970-590-4841
suzanne.ekeler@windermere.com



Scan code
for more
property
details



807 Collins Street, Eaton, CO 80615 — All Levels



Floor 2



Floor 3



Floor 1

TOTAL: 2857 sq. ft
 FLOOR 1: 1529 sq. ft, FLOOR 2: 0 sq. ft, FLOOR 3: 1328 sq. ft
 EXCLUDED AREAS: STORAGE: 101 sq. ft, DRIVEWAY: 836 sq. ft, PATIO: 605 sq. ft,
 PORCH: 74 sq. ft, GARAGE: 923 sq. ft

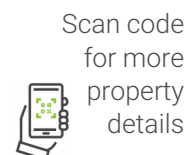
Floor Plan Created By V1photos.com, Measurements Deamed Highly Reliable But Not Guaranteed.



Disclaimer: Sizes and Dimensions are Approximate, Actual May Vary.



Suzanne Ekeler
 970-590-4841
suzanne.ekeler@windermere.com



Scan code
 for more
 property
 details

