

Single Family



1248 SQFT



3 Beds



1/1 Baths



Taylor Haas
303-665-7368

taylorh@coloradorpm.com

<https://www.coloradorpm.com/available-rental-properties-denver>



Scan code
for more
property
details



1980 Swearingin Drive, Colorado Springs, CO 80906 — Main



TOTAL: 1258 sq. ft
BELOW GROUND: 629 sq. ft, FLOOR 2: 629 sq. ft
EXCLUDED AREAS: GARAGE: 302 sq. ft, PORCH: 88 sq. ft, PATIO: 172 sq. ft
Floor Plan Created By V1photos.com, Measurements Deamed Highly Reliable But Not Guaranteed.



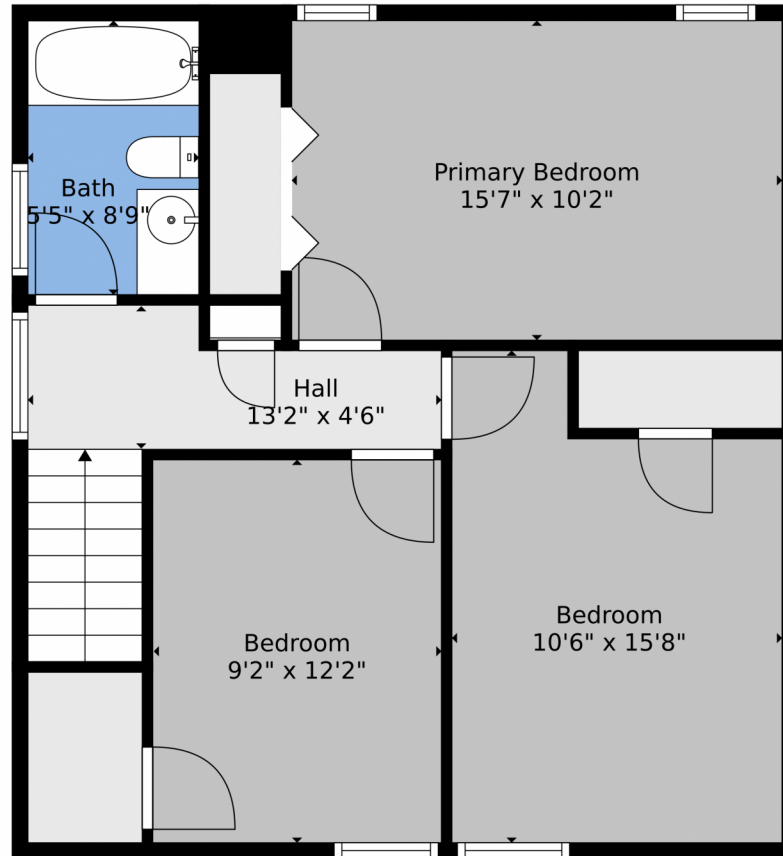
Disclaimer: Sizes and Dimensions are Approximate, Actual May Vary.



Taylor Haas
303-665-7368
taylorh@coloradorpm.com
<https://www.coloradorpm.com/available-rental-properties-denver>



1980 Swearingin Drive, Colorado Springs, CO 80906 — 2nd Level



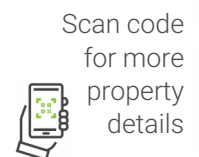
TOTAL: 1258 sq. ft
BELOW GROUND: 629 sq. ft, FLOOR 2: 629 sq. ft
EXCLUDED AREAS: GARAGE: 302 sq. ft, PORCH: 88 sq. ft, PATIO: 172 sq. ft
Floor Plan Created By V1photos.com, Measurements Deamed Highly Reliable But Not Guaranteed.



Disclaimer: Sizes and Dimensions are Approximate, Actual May Vary.



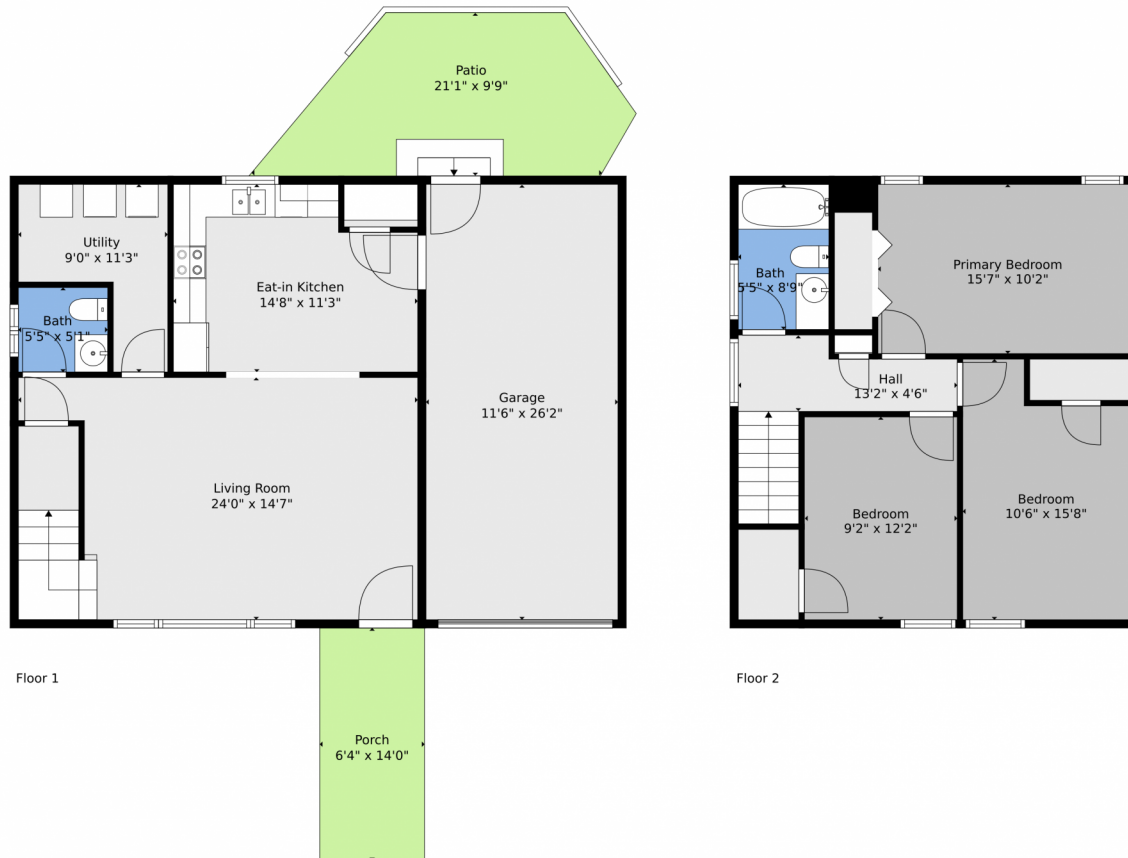
Taylor Haas
303-665-7368
taylorh@coloradorpm.com
<https://www.coloradorpm.com/available-rental-properties-denver>



Scan code
for more
property
details



1980 Swearinger Drive, Colorado Springs, CO 80906 — All Levels



TOTAL: 1258 sq. ft
BELOW GROUND: 629 sq. ft, FLOOR 2: 629 sq. ft
EXCLUDED AREAS: GARAGE: 302 sq. ft, PORCH: 88 sq. ft, PATIO: 172 sq. ft
Floor Plan Created By V1photos.com, Measurements Deamed Highly Reliable But Not Guaranteed.



Disclaimer: Sizes and Dimensions are Approximate, Actual May Vary.



Taylor Haas
303-665-7368
taylorh@coloradorm.com
<https://www.coloradorm.com/available-rental-properties-denver>

