



5325 W A Street
Greeley, CO 80634
COMMUNITY: Forest Glen At Kelly Farm Sub 2nd Fg

MLS # IR1032703
PRICE \$535,000



Single Family



2901 SQFT



4 Beds



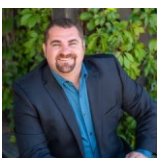
3/1 Baths



3 Car



0.22 Acre



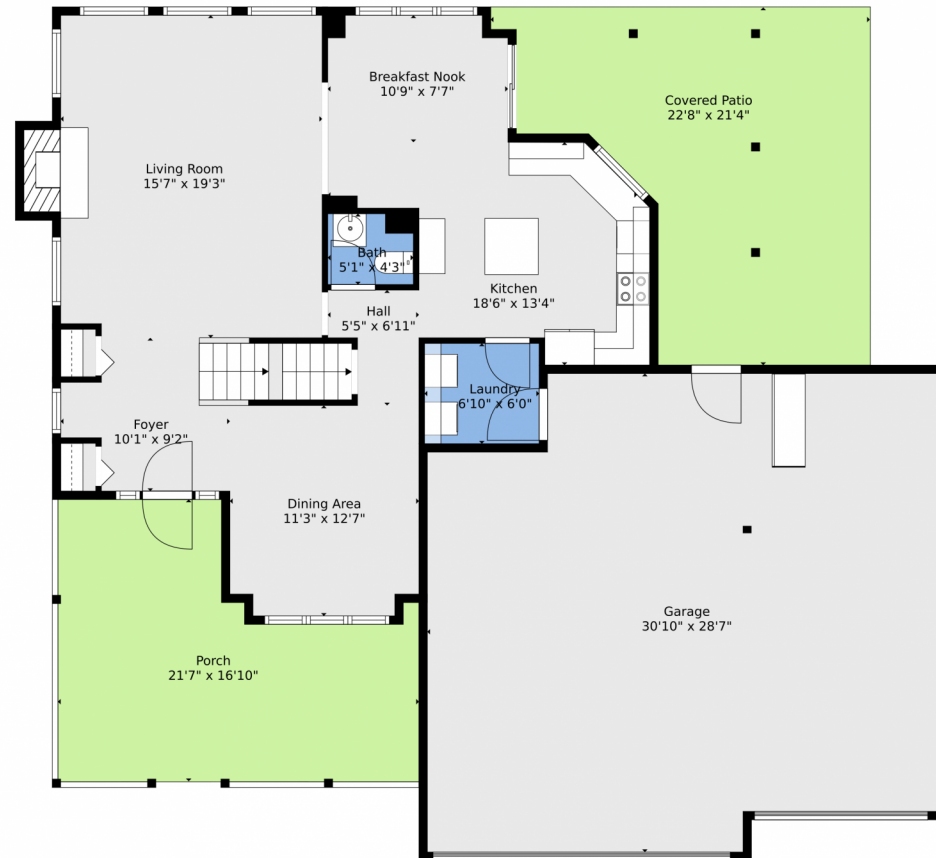
Brad Inhulsen
970-584-4144
brad@yournocorealtor.com



Scan code
for more
property
details



5325 W A Street, Greeley, CO 80634 — Main



TOTAL: 2552 sq. ft
BELOW GROUND: 591 sq. ft, FLOOR 2: 942 sq. ft, FLOOR 3: 1019 sq. ft
EXCLUDED AREAS: STORAGE: 173 sq. ft, UTILITY: 42 sq. ft, GARAGE: 819 sq. ft,
PORCH: 279 sq. ft, COVERED PATIO: 346 sq. ft, FIREPLACE: 13 sq. ft,
LOW CEILING: 29 sq. ft

Floor Plan Created By V1photos.com, Measurements Deamed Highly Reliable But Not Guaranteed.



Disclaimer: Sizes and Dimensions are Approximate, Actual May Vary.



Brad Inhulsen
970-584-4144
brad@yournocorealtor.com



Scan code
for more
property
details



5325 W A Street, Greeley, CO 80634 – 2nd Level



TOTAL: 2552 sq. ft
BELOW GROUND: 591 sq. ft, FLOOR 2: 942 sq. ft, FLOOR 3: 1019 sq. ft
EXCLUDED AREAS: STORAGE: 173 sq. ft, UTILITY: 42 sq. ft, GARAGE: 819 sq. ft,
PORCH: 279 sq. ft, COVERED PATIO: 346 sq. ft, FIREPLACE: 13 sq. ft,
LOW CEILING: 29 sq. ft

Floor Plan Created By V1photos.com, Measurements Deamed Highly Reliable But Not Guaranteed.



Disclaimer: Sizes and Dimensions are Approximate, Actual May Vary.



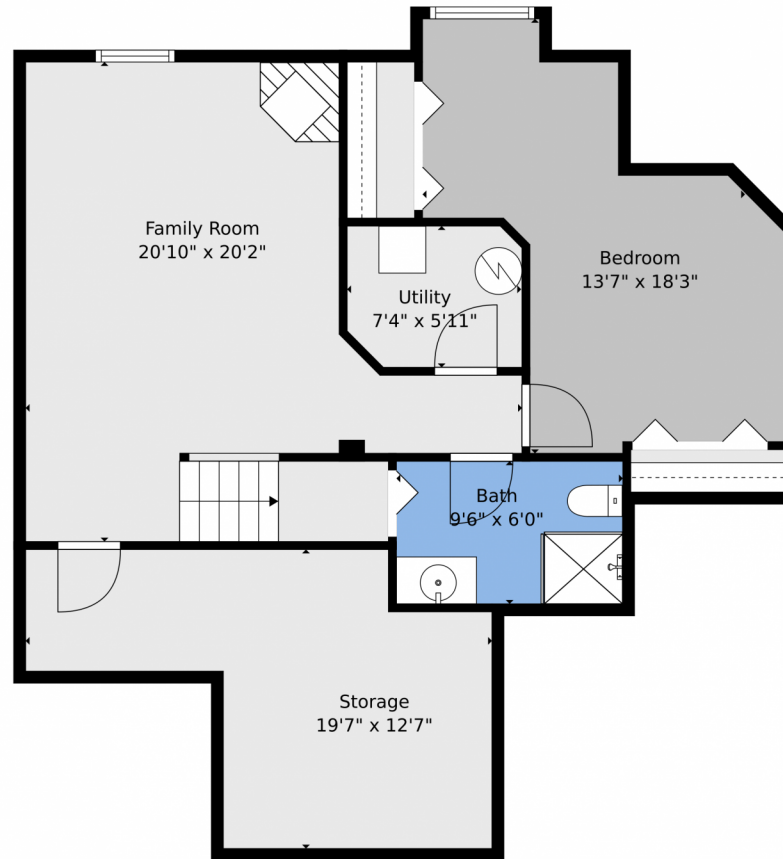
Brad Inhulsen
970-584-4144
brad@yournocorealtor.com



Scan code
for more
property
details



5325 W A Street, Greeley, CO 80634 — Basement



TOTAL: 2552 sq. ft
BELOW GROUND: 591 sq. ft, FLOOR 2: 942 sq. ft, FLOOR 3: 1019 sq. ft
EXCLUDED AREAS: STORAGE: 173 sq. ft, UTILITY: 42 sq. ft, GARAGE: 819 sq. ft,
PORCH: 279 sq. ft, COVERED PATIO: 346 sq. ft, FIREPLACE: 13 sq. ft,
LOW CEILING: 29 sq. ft

Floor Plan Created By V1photos.com, Measurements Deamed Highly Reliable But Not Guaranteed.



Disclaimer: Sizes and Dimensions are Approximate, Actual May Vary.



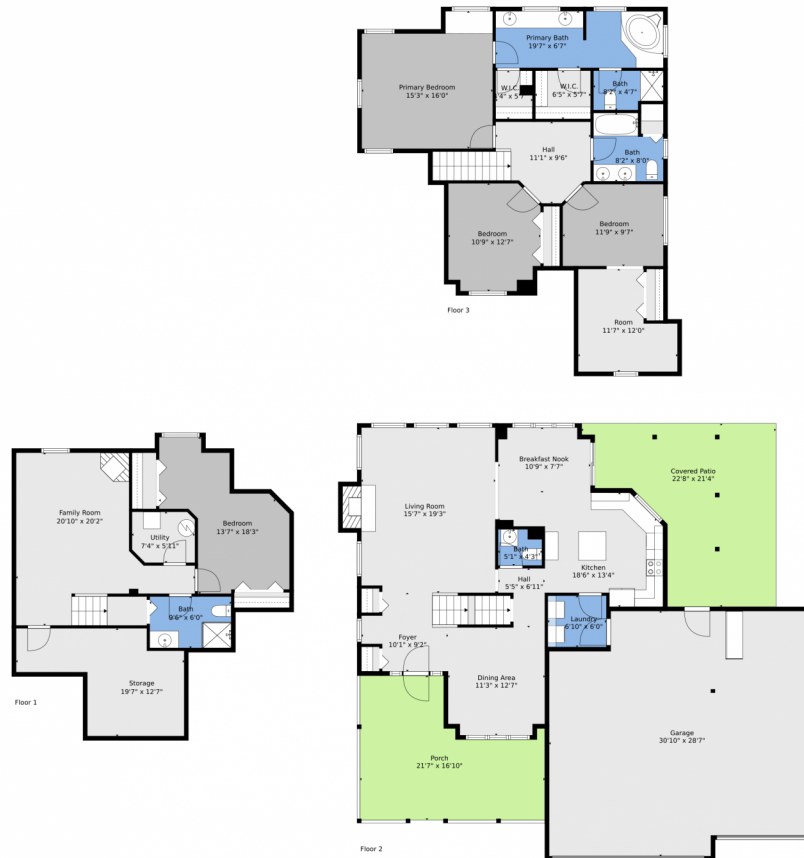
Brad Inhulsen
970-584-4144
brad@yournocorealtor.com



Scan code
for more
property
details



5325 W A Street, Greeley, CO 80634 — All Levels



TOTAL: 2552 sq. ft
BELOW GROUND: 591 sq. ft, FLOOR 2: 942 sq. ft, FLOOR 3: 1019 sq. ft
EXCLUDED AREAS: STORAGE: 173 sq. ft, UTILITY: 42 sq. ft, GARAGE: 819 sq. ft,
PORCH: 279 sq. ft, COVERED PATIO: 346 sq. ft, FIREPLACE: 13 sq. ft,
LOW CEILING: 29 sq. ft

Floor Plan Created By V1photos.com, Measurements Deamed Highly Reliable But Not Guaranteed.



Disclaimer: Sizes and Dimensions are Approximate, Actual May Vary.



Brad Inhulsen
970-584-4144
brad@yournocorealtor.com



Scan code
for more
property
details

