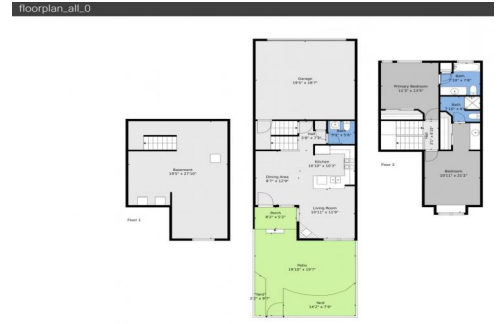




843 Snowberry Street  
 Longmont, CO 80503  
 COMMUNITY: MEADOWVIEW WEST

MLS # 7949264  
 PRICE \$465,000



Townhouse 1572 SQFT 2 Beds 2/1 Baths 2 Car 0.03 Acre

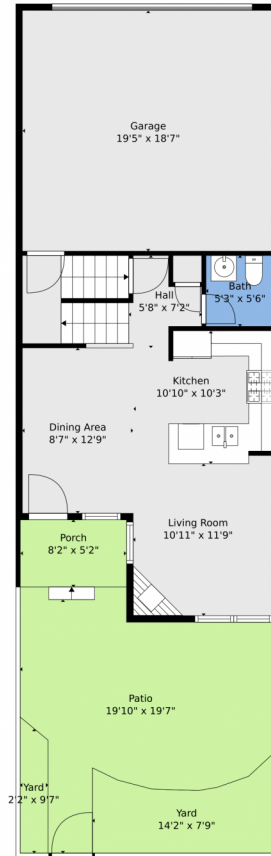
## PROPERTY DETAILS

This beautifully designed townhouse in Mountainview West offers modern living across 1,528 square feet. It features 2 upper-level bedrooms, each with a private bathroom. The main level boasts a bright living room with large windows, flowing into a dining area perfect for gatherings by the fireplace. The kitchen is well-appointed with ample cabinet space, stainless-steel appliances, and a breakfast bar. An unfinished basement provides potential for a lower-level bedroom, living area, and full bathroom, ideal for guests or rental income. An attached 2-car garage adds convenience, while a fenced patio is perfect for entertaining. Located just 10 minutes from Main Street and 20 minutes from Boulder, with schools, trails, and parks nearby, this is a truly desirable home.



**Jason Cassidy**  
 720-220-6964  
 jason@sunstonerealestateservices.com





**TOTAL: 1502 sq. ft**  
BELOW GROUND: 474 sq. ft, FLOOR 2: 474 sq. ft, FLOOR 3: 554 sq. ft  
EXCLUDED AREAS: GARAGE: 362 sq. ft, PORCH: 43 sq. ft, YARD: 100 sq. ft,  
PATIO: 276 sq. ft

Floor Plan Created By V1photos.com, Measurements Deamed Highly Reliable But Not Guaranteed.



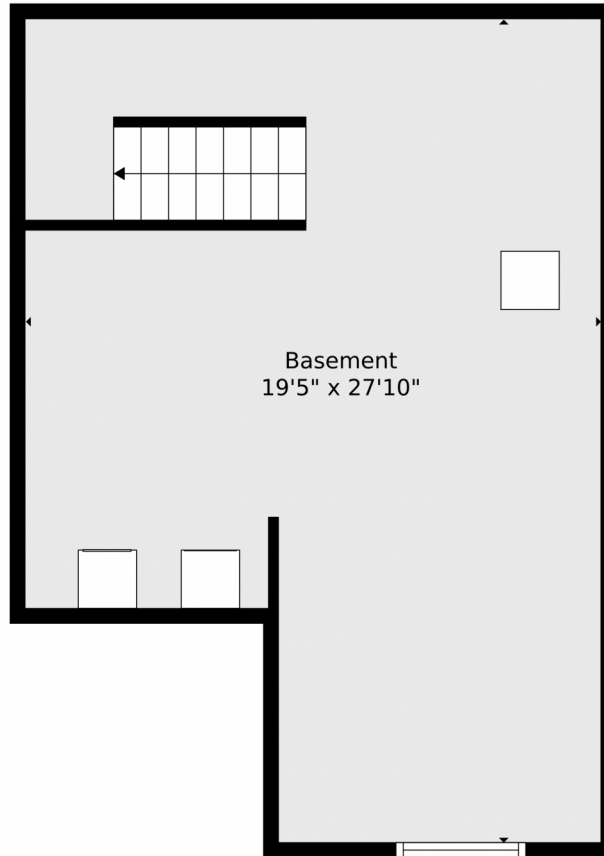
Disclaimer: Sizes and Dimensions are Approximate, Actual May Vary.



**Jason Cassidy**  
720-220-6964  
jason@sunstonerealestateservices.com



843 Snowberry Street, Longmont, CO 80503 – Basement



**TOTAL: 1502 sq. ft**

BELOW GROUND: 474 sq. ft, FLOOR 2: 474 sq. ft, FLOOR 3: 554 sq. ft  
EXCLUDED AREAS: GARAGE: 362 sq. ft, PORCH: 43 sq. ft, YARD: 100 sq. ft,  
PATIO: 276 sq. ft

Floor Plan Created By V1photos.com, Measurements Deamed Highly Reliable But Not Guaranteed.



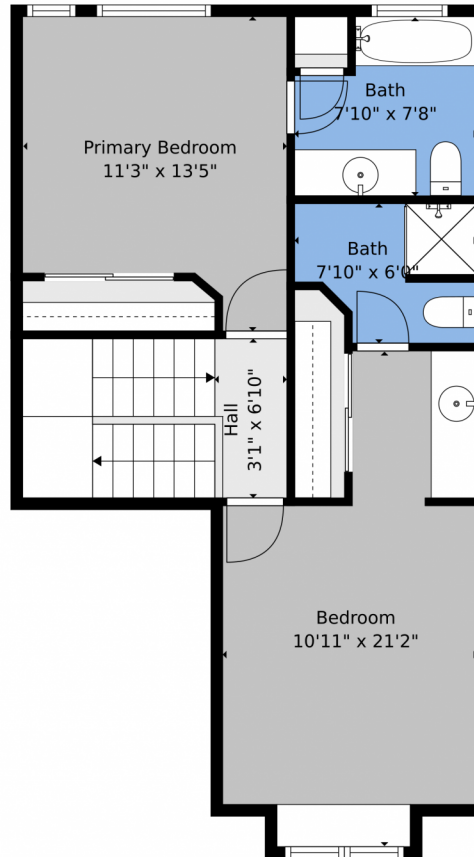
Disclaimer: Sizes and Dimensions are Approximate, Actual May Vary.



**Jason Cassidy**  
720-220-6964  
jason@sunstonerealestateservices.com



843 Snowberry Street, Longmont, CO 80503 – 2nd Level



**TOTAL: 1502 sq. ft**  
BELOW GROUND: 474 sq. ft, FLOOR 2: 474 sq. ft, FLOOR 3: 554 sq. ft  
EXCLUDED AREAS: GARAGE: 362 sq. ft, PORCH: 43 sq. ft, YARD: 100 sq. ft,  
PATIO: 276 sq. ft

Floor Plan Created By V1photos.com, Measurements Deamed Highly Reliable But Not Guaranteed.



Disclaimer: Sizes and Dimensions are Approximate, Actual May Vary.



**Jason Cassidy**  
720-220-6964  
jason@sunstonerealestateservices.com



# 843 Snowberry Street, Longmont, CO 80503 – All Levels



**TOTAL: 1502 sq. ft**  
BELOW GROUND: 474 sq. ft, FLOOR 2: 474 sq. ft, FLOOR 3: 554 sq. ft  
EXCLUDED AREAS: GARAGE: 362 sq. ft, PORCH: 43 sq. ft, YARD: 100 sq. ft,  
PATIO: 276 sq. ft

Floor Plan Created By V1photos.com, Measurements Deamed Highly Reliable But Not Guaranteed.



Disclaimer: Sizes and Dimensions are Approximate, Actual May Vary.



**Jason Cassidy**  
720-220-6964  
jason@sunstonerealestateservices.com

