



2620 Ashland Lane
Fort Collins, CO 80524
COMMUNITY: Maple Hill



Single Family



1890 SQFT



3 Beds



2/1 Baths



2 Car



0.15 Acre



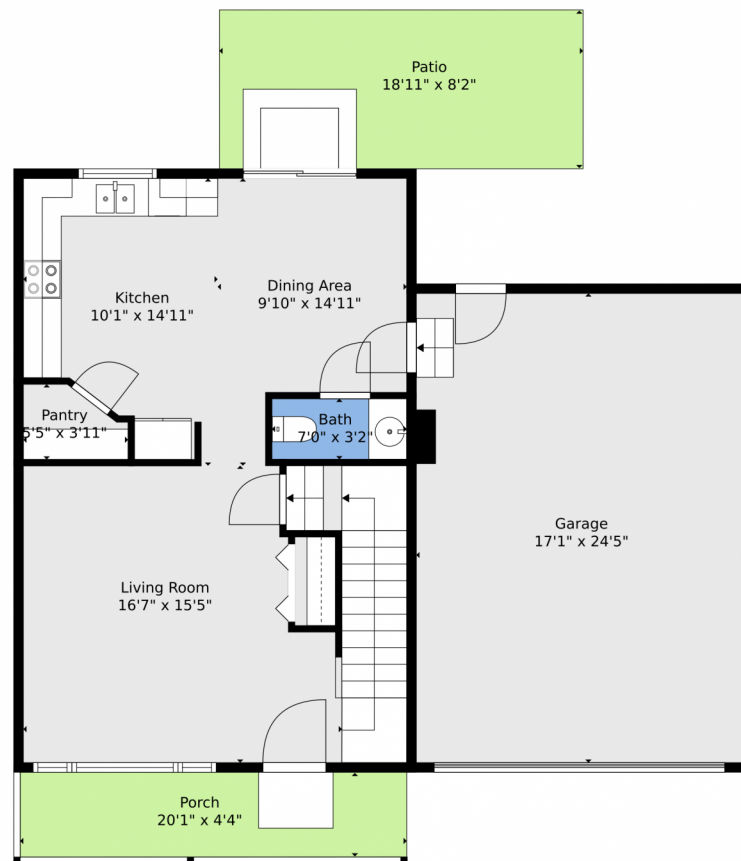
Wesley Lamb
970-302-4419
wes@searsrealestate.com



Scan code
for more
property
details



2620 Ashland Lane, Fort Collins, CO 80524 — Main



TOTAL: 1258 sq. ft
BELOW GROUND: 0 sq. ft, FLOOR 2: 607 sq. ft, FLOOR 3: 651 sq. ft
EXCLUDED AREAS: BASEMENT: 562 sq. ft, GARAGE: 417 sq. ft, PORCH: 89 sq. ft,
PATIO: 156 sq. ft

Floor Plan Created By V1photos.com, Measurements Deamed Highly Reliable But Not Guaranteed.



Disclaimer: Sizes and Dimensions are Approximate, Actual May Vary.



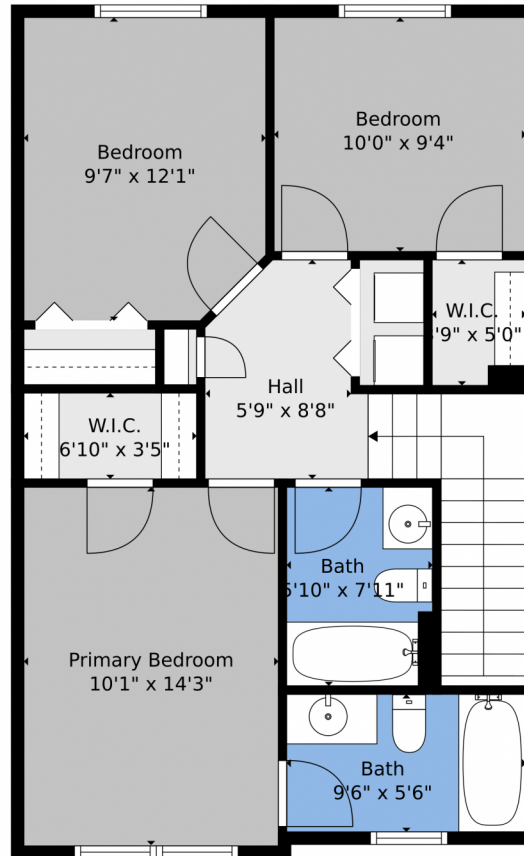
Wesley Lamb
970-302-4419
wes@searsrealestate.com



Scan code
for more
property
details



2620 Ashland Lane, Fort Collins, CO 80524 – 2nd Level



TOTAL: 1258 sq. ft
BELOW GROUND: 0 sq. ft, FLOOR 2: 607 sq. ft, FLOOR 3: 651 sq. ft
EXCLUDED AREAS: BASEMENT: 562 sq. ft, GARAGE: 417 sq. ft, PORCH: 89 sq. ft,
PATIO: 156 sq. ft

Floor Plan Created By V1photos.com, Measurements Deamed Highly Reliable But Not Guaranteed.



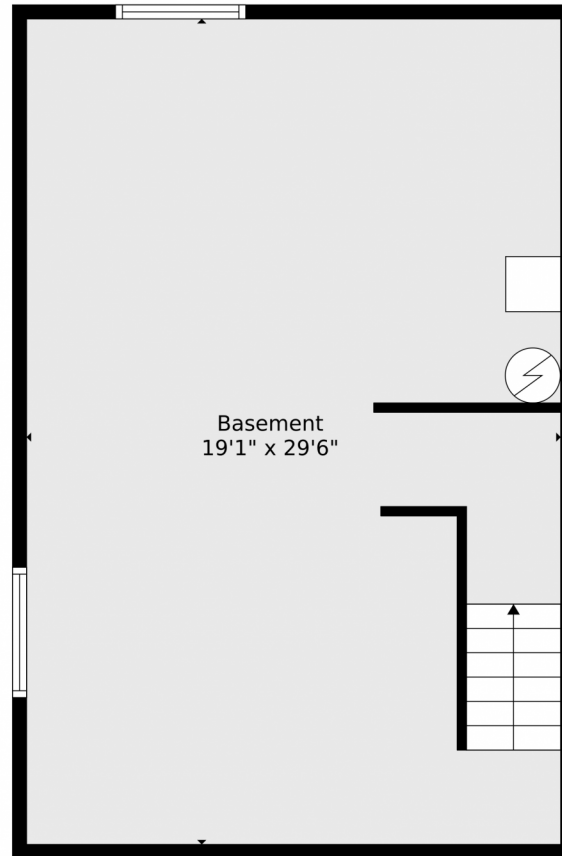
Disclaimer: Sizes and Dimensions are Approximate, Actual May Vary.



Wesley Lamb
970-302-4419
wes@searsrealestate.com



2620 Ashland Lane, Fort Collins, CO 80524 — Basement



TOTAL: 1258 sq. ft
BELOW GROUND: 0 sq. ft, FLOOR 2: 607 sq. ft, FLOOR 3: 651 sq. ft
EXCLUDED AREAS: BASEMENT: 562 sq. ft, GARAGE: 417 sq. ft, PORCH: 89 sq. ft,
PATIO: 156 sq. ft

Floor Plan Created By V1photos.com, Measurements Deamed Highly Reliable But Not Guaranteed.



Disclaimer: Sizes and Dimensions are Approximate, Actual May Vary.



Wesley Lamb
970-302-4419
wes@searsrealestate.com



2620 Ashland Lane, Fort Collins, CO 80524 — All Levels



TOTAL: 1258 sq. ft
 BELOW GROUND: 0 sq. ft, FLOOR 2: 607 sq. ft, FLOOR 3: 651 sq. ft
 EXCLUDED AREAS: BASEMENT: 562 sq. ft, GARAGE: 417 sq. ft, PORCH: 89 sq. ft,
 PATIO: 156 sq. ft

Floor Plan Created By V1photos.com, Measurements Deamed Highly Reliable But Not Guaranteed.



Disclaimer: Sizes and Dimensions are Approximate, Actual May Vary.



Wesley Lamb
 970-302-4419
 wes@searsrealestate.com

