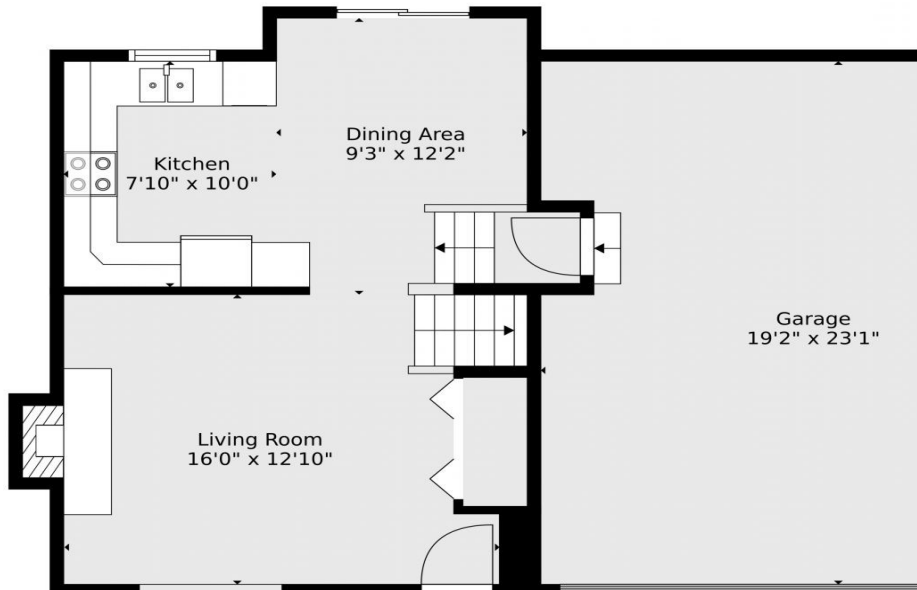


floorplan_single_0



 Single Family

 1000 SQFT

 3 Beds

 1 Baths

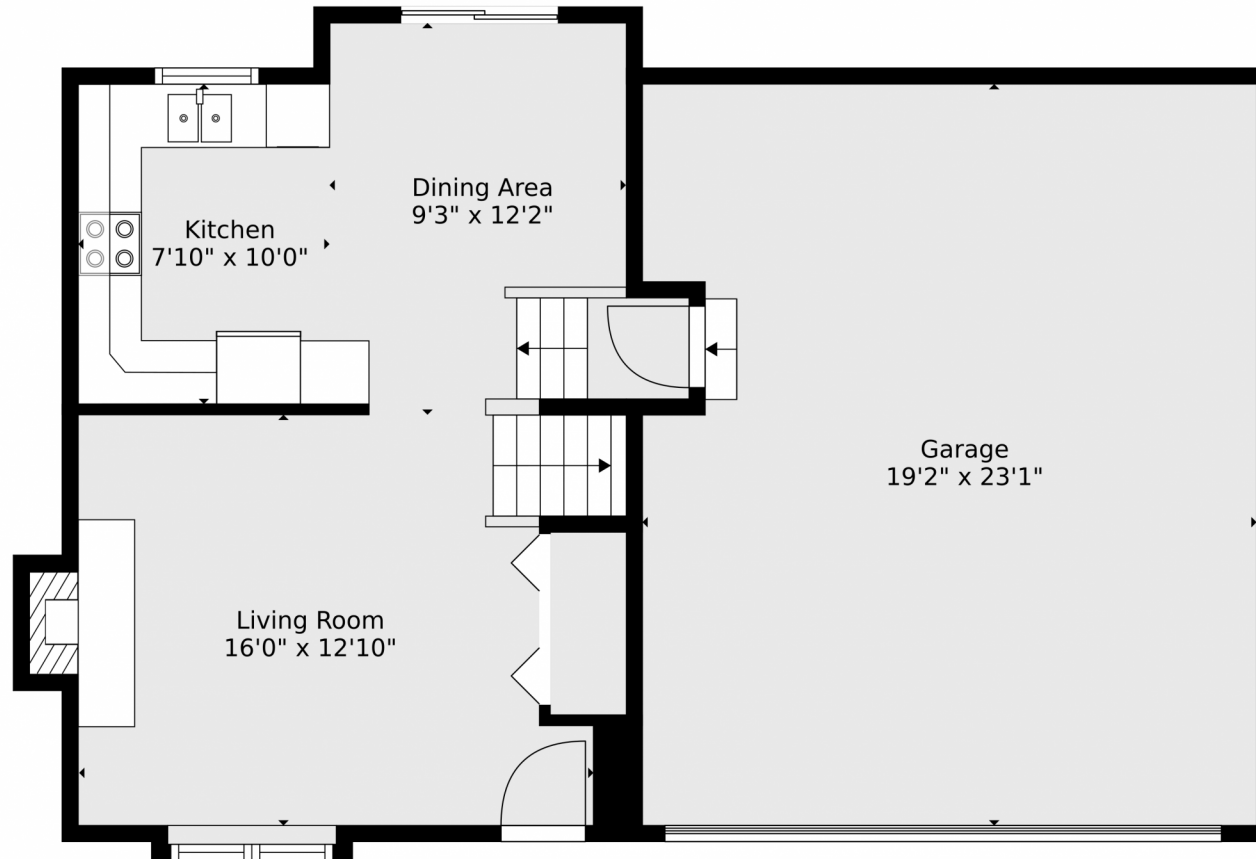


Taylor Haas
303-665-7368
taylorh@coloradorpm.com
<https://www.coloradorpm.com/available-rental-properties-denver>



Scan code
for more
property
details





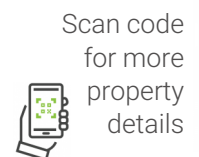
TOTAL: 963 sq. ft
FLOOR 1: 424 sq. ft, FLOOR 2: 539 sq. ft
EXCLUDED AREAS: GARAGE: 434 sq. ft, FIREPLACE: 6 sq. ft
Floor Plan Created By V1photos.com, Measurements Deamed Highly Reliable But Not Guaranteed.



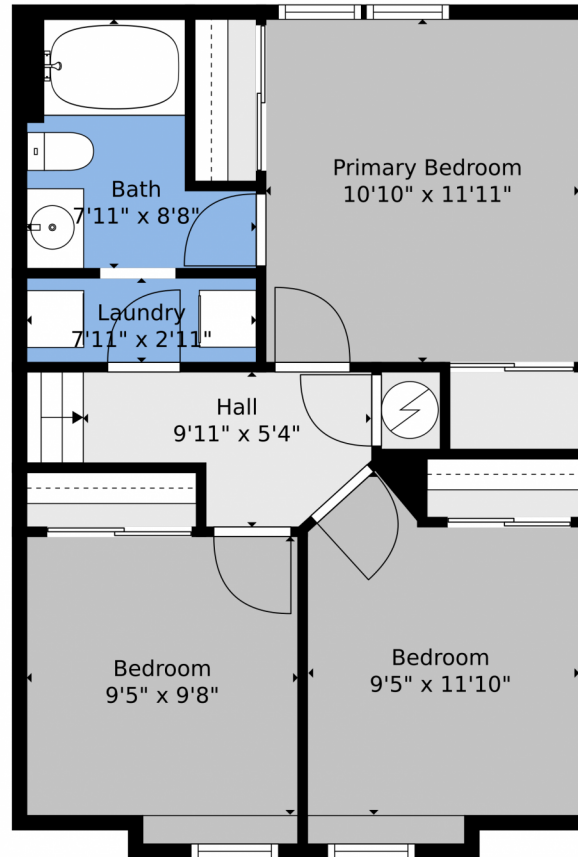
Disclaimer: Sizes and Dimensions are Approximate, Actual May Vary.



Taylor Haas
303-665-7368
taylorh@coloradorpm.com
<https://www.coloradorpm.com/available-rental-properties-denver>



4360 Liverpool Court, Denver, CO 80249 – 2nd Level



TOTAL: 963 sq. ft

FLOOR 1: 424 sq. ft, FLOOR 2: 539 sq. ft

EXCLUDED AREAS: GARAGE: 434 sq. ft, FIREPLACE: 6 sq. ft

Floor Plan Created By V1photos.com, Measurements Deamed Highly Reliable But Not Guaranteed.



Disclaimer: Sizes and Dimensions are Approximate, Actual May Vary.



Taylor Haas

303-665-7368

taylorh@coloradorpm.com

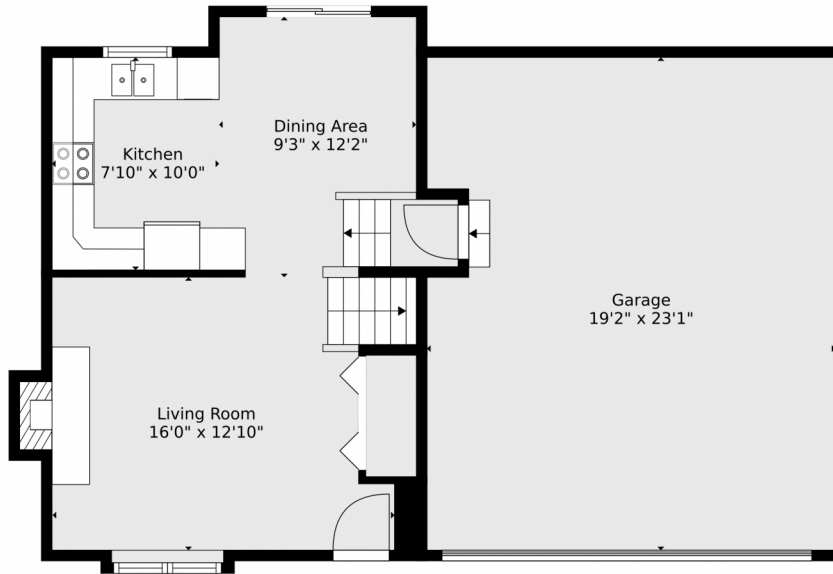
<https://www.coloradorpm.com/available-rental-properties-denver>



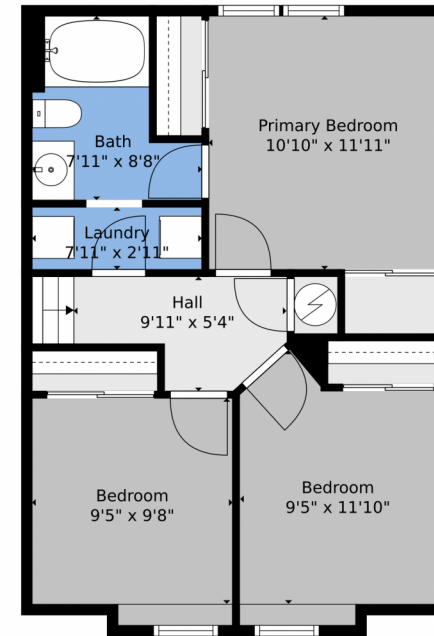
Scan code
for more
property
details



4360 Liverpool Court, Denver, CO 80249 — All Levels



Floor 1



Floor 2

TOTAL: 963 sq. ft
FLOOR 1: 424 sq. ft, FLOOR 2: 539 sq. ft
EXCLUDED AREAS: GARAGE: 434 sq. ft, FIREPLACE: 6 sq. ft

Floor Plan Created By V1photos.com, Measurements Deamed Highly Reliable But Not Guaranteed.



Disclaimer: Sizes and Dimensions are Approximate, Actual May Vary.



Taylor Haas

303-665-7368

taylorh@coloradorpm.com

<https://www.coloradorpm.com/available-rental-properties-denver>



Scan code
for more
property
details

