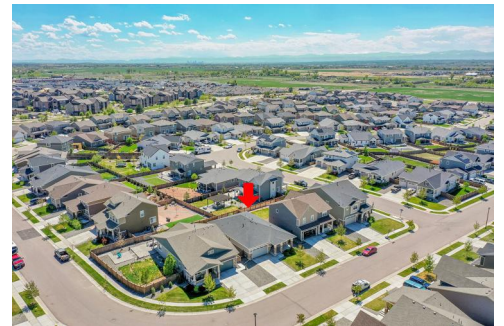




3086 Kestrel Street
 Brighton, CO 80601
 COMMUNITY: Prairie Center Village

MLS # 2150592
 PRICE \$560,000



Single Family 2879 SQFT 3 Beds 2 Baths 2 Car 0.14 Acre

PROPERTY DETAILS

Welcome home to this stunning 5-year-old residence in Brighton! Built in 2020, it features a landscaped backyard with a large deck. Inside, a versatile bonus room greets you, perfect for an office or playroom. The open floor plan includes a spacious kitchen and family room, ideal for gatherings. The master bedroom boasts a full en-suite bath, complemented by two additional bedrooms and a shared bath. An unfinished basement offers over 1,000 sq ft for storage or customization, complete with a tankless hot water heater. Enjoy the outdoor space with a covered patio and a two-tiered deck featuring a gas fire pit. Located near a park and Prairie Center shopping area, with easy access to I-76 and E-470. Don't miss this fantastic opportunity!



Jerry Haberkorn
 303-919-5032
 jhaberkorn@remax.net



3086 Kestrel Street, Brighton, CO 80601 – Main



TOTAL: 2464 sq. ft
BELOW GROUND: 759 sq. ft, FLOOR 2: 1705 sq. ft
EXCLUDED AREAS: LOW CEILING: 788 sq. ft, STORAGE: 156 sq. ft, GARAGE: 387 sq. ft,
PORCH: 159 sq. ft, DECK: 291 sq. ft, COVERED PATIO: 116 sq. ft

Floor Plan Created By V1photos.com, Measurements Deamed Highly Reliable But Not Guaranteed.



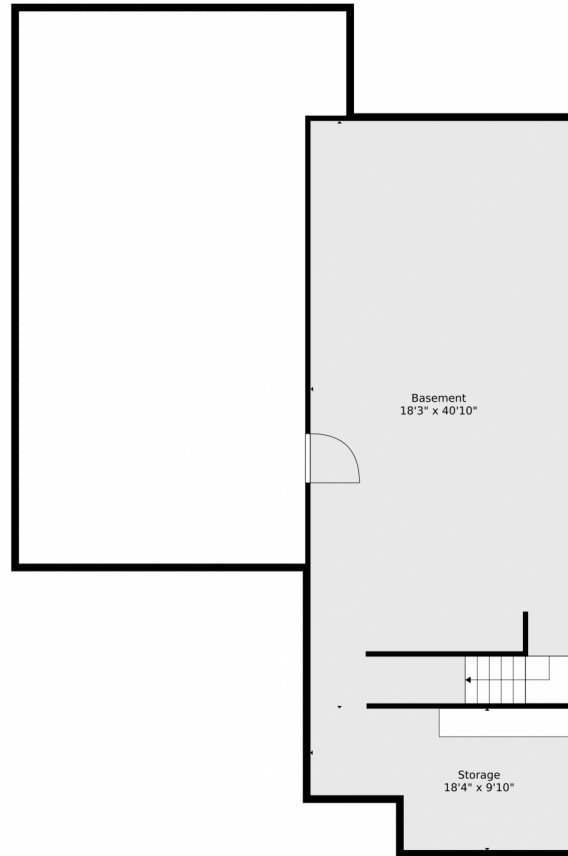
Disclaimer: Sizes and Dimensions are Approximate, Actual May Vary.



Jerry Haberkorn
303-919-5032
jhaberkorn@remax.net



3086 Kestrel Street, Brighton, CO 80601 – Basement



TOTAL: 2464 sq. ft
BELOW GROUND: 759 sq. ft, FLOOR 2: 1705 sq. ft
EXCLUDED AREAS: LOW CEILING: 788 sq. ft, STORAGE: 156 sq. ft, GARAGE: 387 sq. ft,
PORCH: 159 sq. ft, DECK: 291 sq. ft, COVERED PATIO: 116 sq. ft

Floor Plan Created By V1photos.com, Measurements Deamed Highly Reliable But Not Guaranteed.



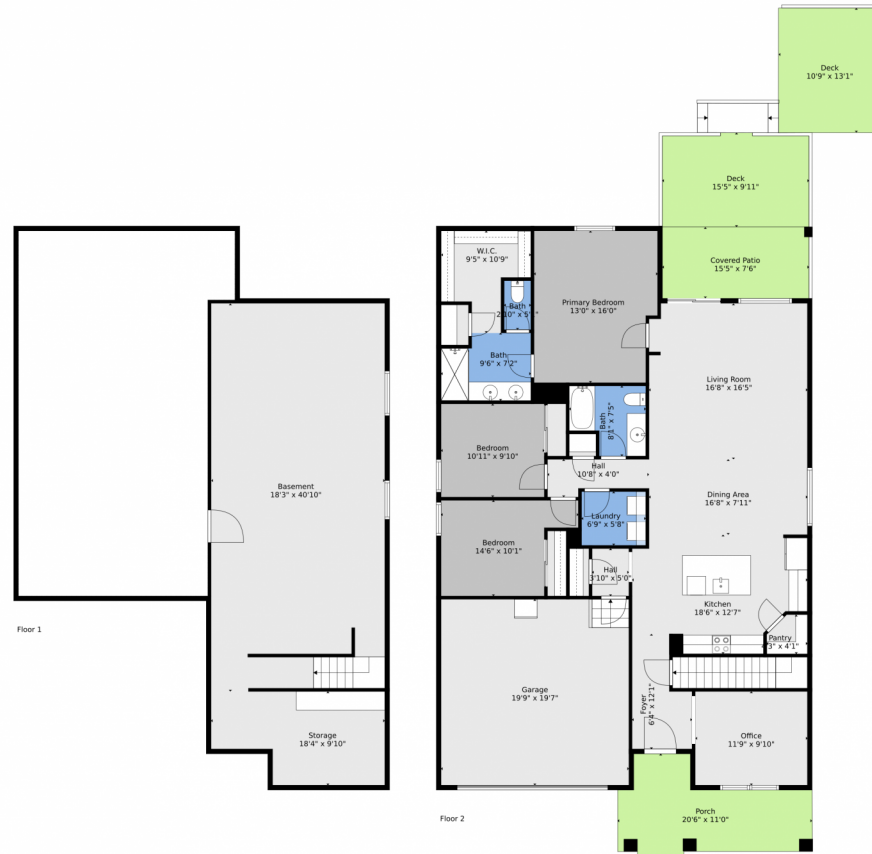
Disclaimer: Sizes and Dimensions are Approximate, Actual May Vary.



Jerry Haberkorn
303-919-5032
jhaberkorn@remax.net



3086 Kestrel Street, Brighton, CO 80601 – All Levels



TOTAL: 2464 sq. ft
BELOW GROUND: 759 sq. ft, FLOOR 2: 1705 sq. ft
EXCLUDED AREAS: LOW CEILING: 788 sq. ft, STORAGE: 156 sq. ft, GARAGE: 387 sq. ft,
PORCH: 159 sq. ft, DECK: 291 sq. ft, COVERED PATIO: 116 sq. ft

Floor Plan Created By V1photos.com, Measurements Deamed Highly Reliable But Not Guaranteed.



Disclaimer: Sizes and Dimensions are Approximate, Actual May Vary.



Jerry Haberkorn
303-919-5032
jhaberkorn@remax.net

