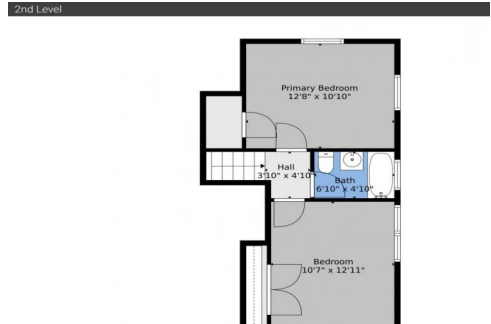




2413 15th Avenue  
Greeley, CO 80631  
COMMUNITY: Farrs



Single Family



1368 SQFT



3 Beds



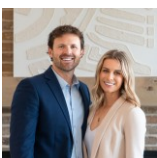
1 Baths



1 Car



0.14 Acre



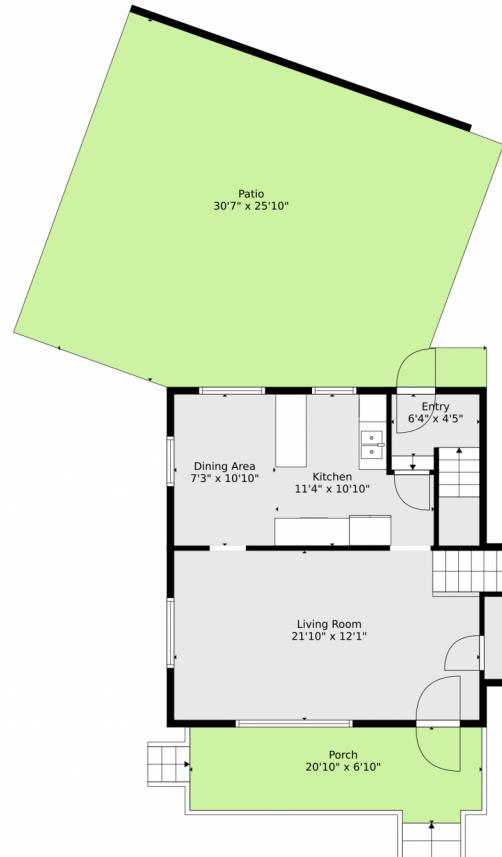
Scott & Carli Nitzel  
970-590-5450  
scott@nexthomefoundations.com



Scan code  
for more  
property  
details



2413 15th Avenue, Greeley, CO 80631 — Main

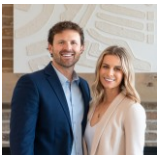


**TOTAL: 1241 sq. ft**  
FLOOR 1: 327 sq. ft, FLOOR 2: 527 sq. ft, FLOOR 3: 387 sq. ft  
EXCLUDED AREAS: UNDEFINED: 13 sq. ft, STORAGE: 55 sq. ft, PATIO: 654 sq. ft,  
PORCH: 127 sq. ft

Floor Plan Created By V1photos.com, Measurements Deamed Highly Reliable But Not Guaranteed.



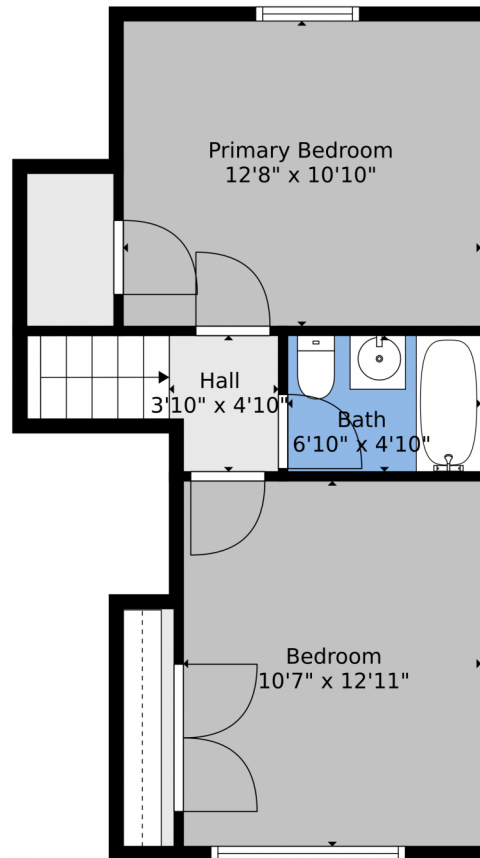
Disclaimer: Sizes and Dimensions are Approximate, Actual May Vary.



**Scott & Carli Nitzel**  
970-590-5450  
[scott@nexthomefoundations.com](mailto:scott@nexthomefoundations.com)



## 2413 15th Avenue, Greeley, CO 80631 — 2nd Level

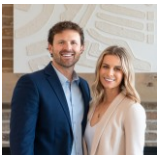


**TOTAL: 1241 sq. ft**  
FLOOR 1: 327 sq. ft, FLOOR 2: 527 sq. ft, FLOOR 3: 387 sq. ft  
EXCLUDED AREAS: UNDEFINED: 13 sq. ft, STORAGE: 55 sq. ft, PATIO: 654 sq. ft,  
PORCH: 127 sq. ft

Floor Plan Created By V1photos.com, Measurements Deamed Highly Reliable But Not Guaranteed.



Disclaimer: Sizes and Dimensions are Approximate, Actual May Vary.

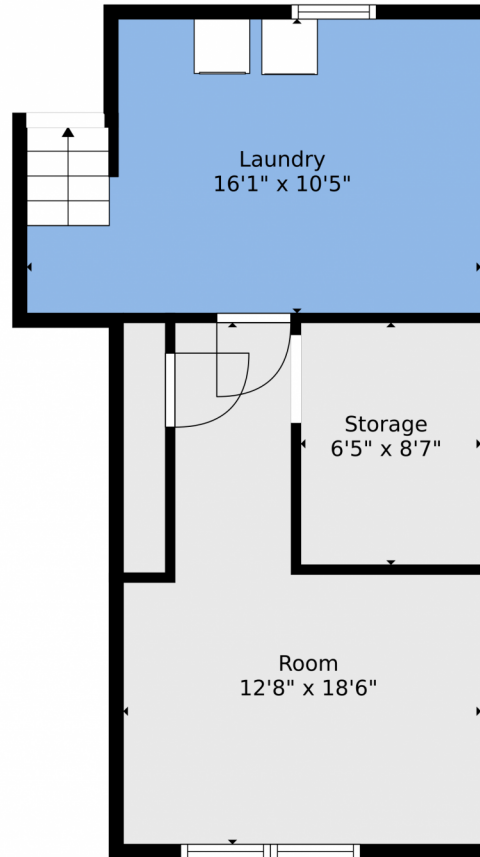


**Scott & Carli Nitzel**  
970-590-5450  
[scott@nexthomefoundations.com](mailto:scott@nexthomefoundations.com)





## 2413 15th Avenue, Greeley, CO 80631 — Lower Level

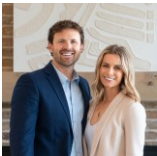


**TOTAL: 1241 sq. ft**  
FLOOR 1: 327 sq. ft, FLOOR 2: 527 sq. ft, FLOOR 3: 387 sq. ft  
EXCLUDED AREAS: UNDEFINED: 13 sq. ft, STORAGE: 55 sq. ft, PATIO: 654 sq. ft,  
PORCH: 127 sq. ft

Floor Plan Created By V1photos.com, Measurements Deamed Highly Reliable But Not Guaranteed.



Disclaimer: Sizes and Dimensions are Approximate, Actual May Vary.



**Scott & Carli Nitzel**  
970-590-5450  
[scott@nexthomefoundations.com](mailto:scott@nexthomefoundations.com)



Scan code  
for more  
property  
details



# 2413 15th Avenue, Greeley, CO 80631 — All Levels

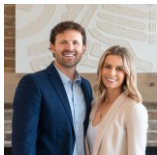


**TOTAL: 1241 sq. ft**  
FLOOR 1: 327 sq. ft, FLOOR 2: 527 sq. ft, FLOOR 3: 387 sq. ft  
EXCLUDED AREAS: UNDEFINED: 13 sq. ft, STORAGE: 55 sq. ft, PATIO: 654 sq. ft,  
PORCH: 127 sq. ft

Floor Plan Created By V1photos.com, Measurements Deamed Highly Reliable But Not Guaranteed.



Disclaimer: Sizes and Dimensions are Approximate, Actual May Vary.



**Scott & Carli Nitzel**  
970-590-5450  
[scott@nexthomefoundations.com](mailto:scott@nexthomefoundations.com)

