



3742 Florentine Circle  
Longmont, CO 80503  
COMMUNITY: Renaissance

PRICE \$560,000



Townhouse



2712 SQFT



3 Beds



2/1 Baths



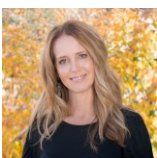
2 Car



0.04 Acre

## PROPERTY DETAILS

Discover this sought-after patio home in Renaissance, Longmont, just minutes from Boulder. Enjoy low-maintenance living near trails, schools, parks, shopping, and restaurants. This ranch-style home features 3 bedrooms, a study, and 3 baths, with a finished garden-level basement. The open floor plan boasts natural light, vaulted ceilings, and elegant hardwood floors. The efficient kitchen includes ample cabinet space and appliances, while the separate dining room is perfect for entertaining. Relax in the large living room with a gas fireplace, or step out onto the private patio. The main level includes a primary suite with a walk-in closet, a study, and laundry. The basement offers a spacious rec room, two bedrooms, and a full bath. With great storage and a 2-car garage, this corner lot home has beautiful green space. Call today for a private showing!



**Terri Ellerington**

303-929-8116

terri@elevated-team.com

<https://www.remax.com/real-estate-agents/terri-ellerington-louisville-co/10205130>

Scan code  
for more  
property  
details



# 3742 Florentine Circle, Longmont, CO 80503 — Main



**TOTAL: 2412 sq. ft**  
BELOW GROUND: 1110 sq. ft, FLOOR 2: 1302 sq. ft  
EXCLUDED AREAS: UTILITY: 62 sq. ft, GARAGE: 400 sq. ft, BALCONY: 141 sq. ft,  
PORCH: 104 sq. ft

Floor Plan Created By V1photos.com, Measurements Deamed Highly Reliable But Not Guaranteed.



Disclaimer: Sizes and Dimensions are Approximate, Actual May Vary.



**Terri Ellerington**

303-929-8116

terri@elevated-team.com

<https://www.remax.com/real-estate-agents/terri-ellerington-louisville-co/102051301>

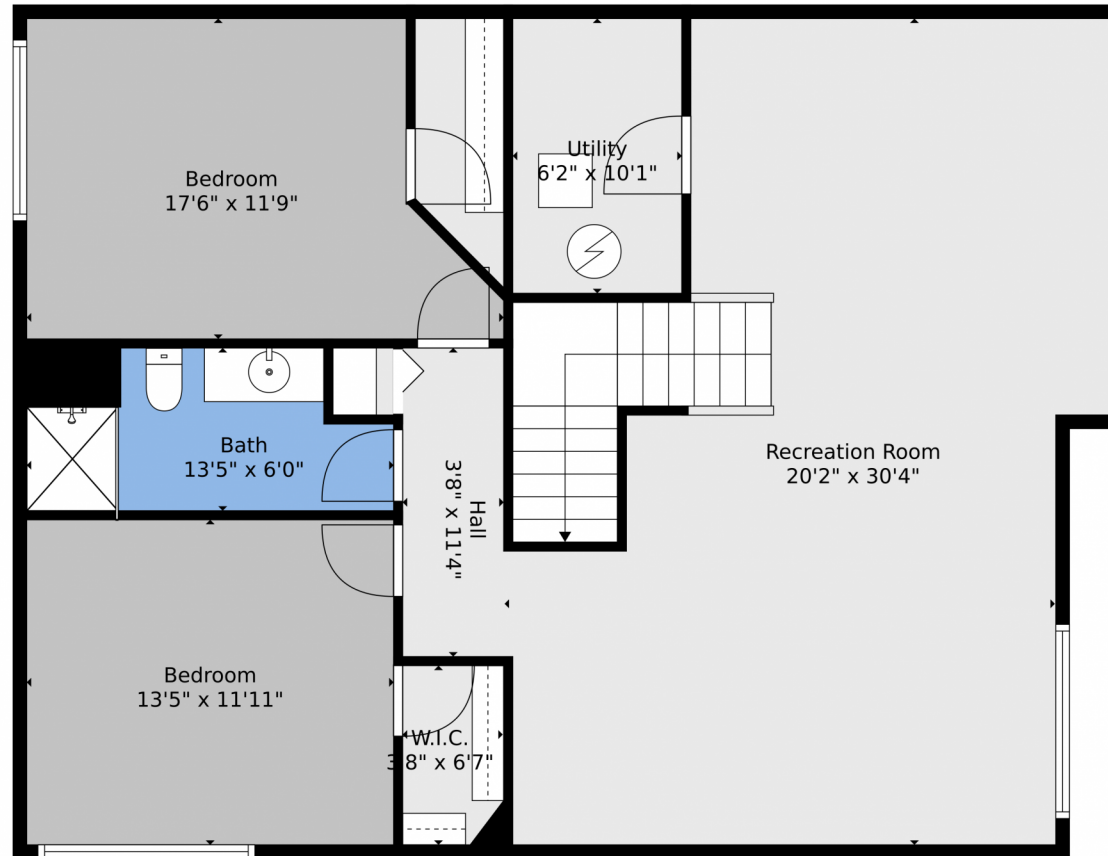


Scan code  
for more  
property  
details





## 3742 Florentine Circle, Longmont, CO 80503 — Lower Level



**TOTAL: 2412 sq. ft**  
BELOW GROUND: 1110 sq. ft, FLOOR 2: 1302 sq. ft  
EXCLUDED AREAS: UTILITY: 62 sq. ft, GARAGE: 400 sq. ft, BALCONY: 141 sq. ft,  
PORCH: 104 sq. ft

Floor Plan Created By V1photos.com, Measurements Deamed Highly Reliable But Not Guaranteed.



Disclaimer: Sizes and Dimensions are Approximate, Actual May Vary.



**Terri Ellerington**

303-929-8116

terri@elevated-team.com

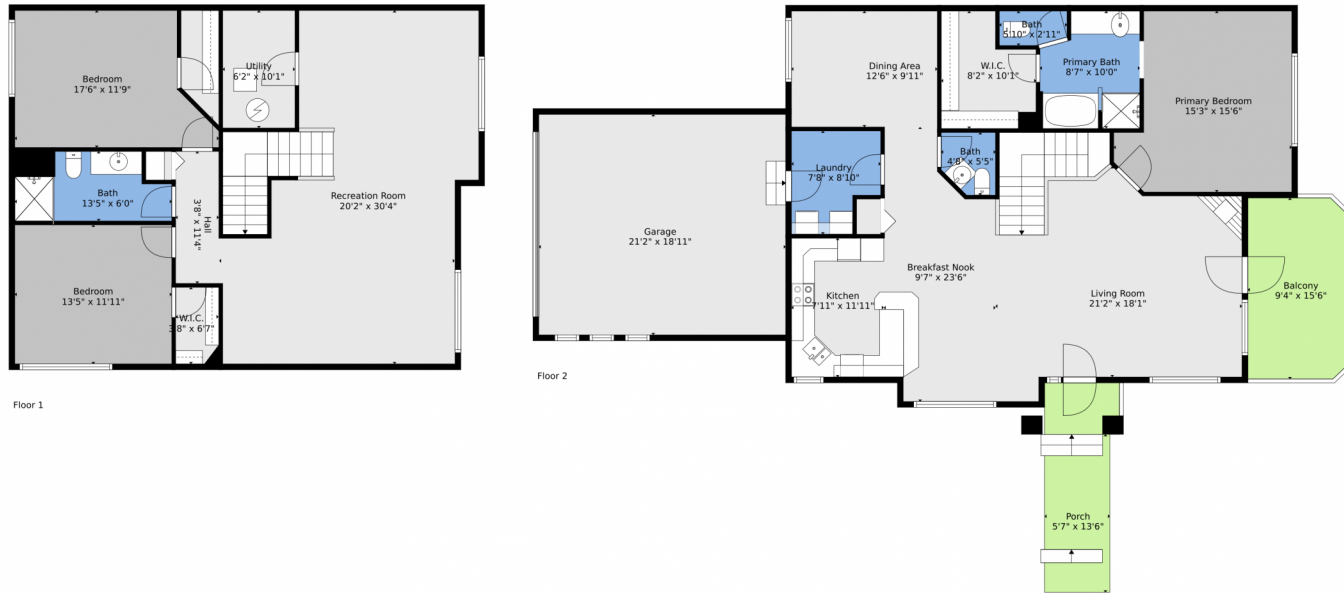
<https://www.remax.com/real-estate-agents/terri-ellerington-louisville-co/102051301>



Scan code  
for more  
property  
details



# 3742 Florentine Circle, Longmont, CO 80503 — All Levels



**TOTAL: 2412 sq. ft**  
BELOW GROUND: 1110 sq. ft, FLOOR 2: 1302 sq. ft  
EXCLUDED AREAS: UTILITY: 62 sq. ft, GARAGE: 400 sq. ft, BALCONY: 141 sq. ft,  
PORCH: 104 sq. ft

Floor Plan Created By V1photos.com, Measurements Deamed Highly Reliable But Not Guaranteed.



Disclaimer: Sizes and Dimensions are Approximate, Actual May Vary.



**Terri Ellerington**

303-929-8116

terri@elevated-team.com

<https://www.remax.com/real-estate-agents/terri-ellerington-louisville-co/102051301>



Scan code  
for more  
property  
details

