





972 Petra Heights  
Colorado Springs, CO 80910



 Single Family

 1702 SQFT

 3 Beds

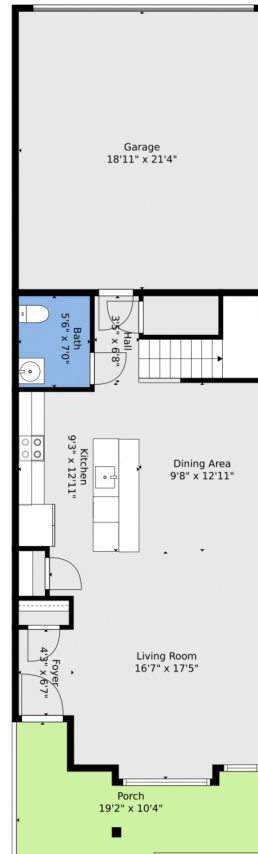
 2/1 Baths



**Taylor Haas**  
303-665-7368  
taylorh@coloradorpm.com  
<https://www.coloradorpm.com/available-rental-properties-denver>



## 972 Petra Heights, Colorado Springs, CO 80910 — Main



**TOTAL: 1560 sq. ft**  
FLOOR 1: 672 sq. ft, FLOOR 2: 888 sq. ft  
EXCLUDED AREAS: GARAGE: 403 sq. ft, PORCH: 132 sq. ft

Floor Plan Created By V1photos.com, Measurements Deamed Highly Reliable But Not Guaranteed.



Disclaimer: Sizes and Dimensions are Approximate, Actual May Vary.



**Taylor Haas**

303-665-7368

taylorh@coloradorpm.com

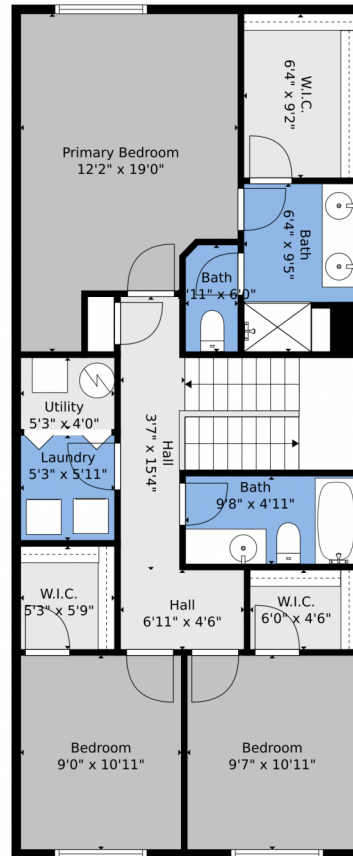
<https://www.coloradorpm.com/available-rental-properties-denver>



Scan code  
for more  
property  
details



## 972 Petra Heights, Colorado Springs, CO 80910 — 2nd Level



**TOTAL: 1560 sq. ft**  
FLOOR 1: 672 sq. ft, FLOOR 2: 888 sq. ft  
EXCLUDED AREAS: GARAGE: 403 sq. ft, PORCH: 132 sq. ft

Floor Plan Created By V1photos.com, Measurements Deamed Highly Reliable But Not Guaranteed.



Disclaimer: Sizes and Dimensions are Approximate, Actual May Vary.



**Taylor Haas**

303-665-7368

taylorh@coloradorpm.com

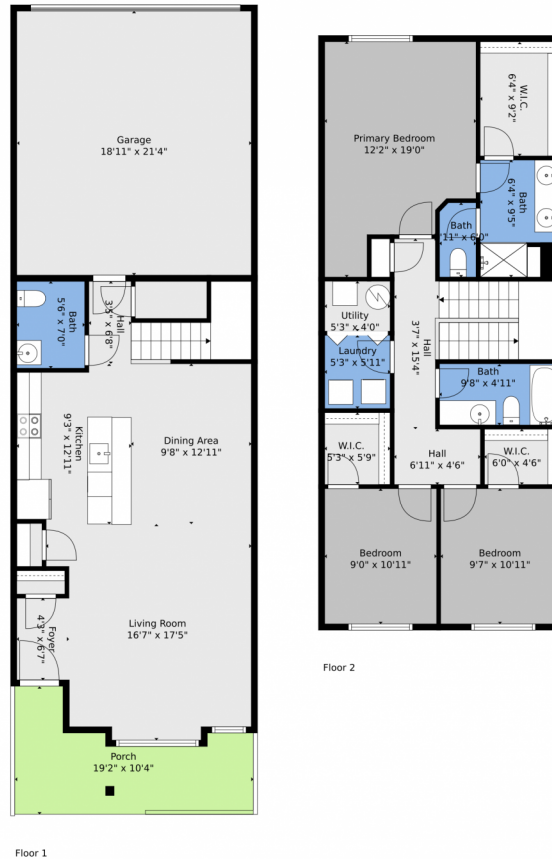
<https://www.coloradorpm.com/available-rental-properties-denver>



Scan code  
for more  
property  
details



# 972 Petra Heights, Colorado Springs, CO 80910 — All Levels



**TOTAL: 1560 sq. ft**  
 FLOOR 1: 672 sq. ft, FLOOR 2: 888 sq. ft  
 EXCLUDED AREAS: GARAGE: 403 sq. ft, PORCH: 132 sq. ft

Floor Plan Created By V1photos.com, Measurements Deamed Highly Reliable But Not Guaranteed.



Disclaimer: Sizes and Dimensions are Approximate, Actual May Vary.



**Taylor Haas**  
 303-665-7368  
 taylorh@coloradorpm.com  
<https://www.coloradorpm.com/available-rental-properties-denver>

