


 Single Family

 1279 SQFT

 4 Beds

 1 Baths



**Carl Dire**  
720-260-9979  
diresellsdenver@yahoo.com

Scan code  
for more  
property  
details





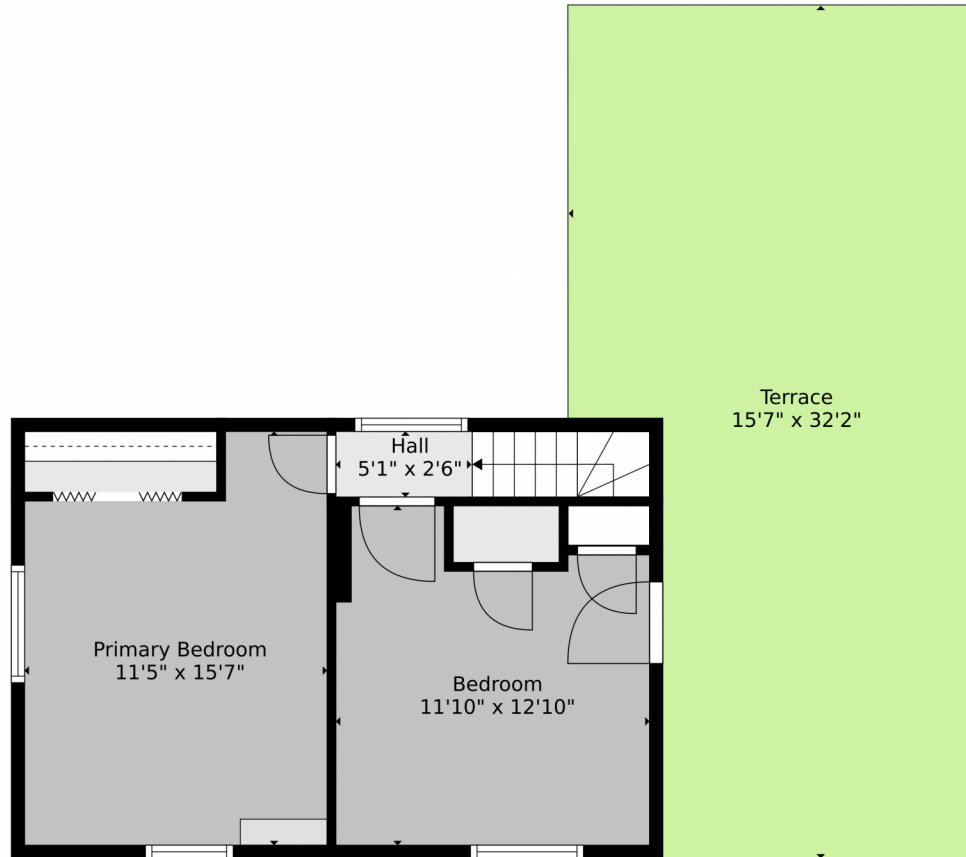
**TOTAL: 1150 sq. ft**  
BELOW GROUND: 782 sq. ft, FLOOR 2: 368 sq. ft  
EXCLUDED AREAS: PORCH: 231 sq. ft, PATIO: 56 sq. ft, TERRACE: 445 sq. ft  
Floor Plan Created By V1photos.com, Measurements Deamed Highly Reliable But Not Guaranteed.

Disclaimer: Sizes and Dimensions are Approximate, Actual May Vary.



**Carl Dire**  
720-260-9979  
diresellsdenver@yahoo.com





**TOTAL: 1150 sq. ft**  
BELOW GROUND: 782 sq. ft, FLOOR 2: 368 sq. ft  
EXCLUDED AREAS: PORCH: 231 sq. ft, PATIO: 56 sq. ft, TERRACE: 445 sq. ft  
Floor Plan Created By V1photos.com, Measurements Deamed Highly Reliable But Not Guaranteed.



Disclaimer: Sizes and Dimensions are Approximate, Actual May Vary.



**Carl Dire**  
720-260-9979  
diresellsdenver@yahoo.com



# 6671 Grove Street, Denver, CO 80221 – All Levels



Floor 1



Floor 2

**TOTAL: 1150 sq. ft**  
BELOW GROUND: 782 sq. ft, FLOOR 2: 368 sq. ft  
EXCLUDED AREAS: PORCH: 231 sq. ft, PATIO: 56 sq. ft, TERRACE: 445 sq. ft  
Floor Plan Created By V1photos.com, Measurements Deamed Highly Reliable But Not Guaranteed.



Disclaimer: Sizes and Dimensions are Approximate, Actual May Vary.



**Carl Dire**  
720-260-9979  
diresellsdenver@yahoo.com

