



Single Family



2822 SQFT



3 Beds



3/1 Baths



Taylor Haas

303-665-7368

taylorh@coloradorp.com

<https://www.coloradorp.com/available-rental-properties-denver>



Scan code
for more
property
details



928 Jefferson Avenue, Louisville, CO 80027 — Main



TOTAL: 1990 sq. ft
BELOW GROUND: 709 sq. ft, FLOOR 2: 1281 sq. ft
EXCLUDED AREAS: UTILITY: 78 sq. ft, SCREENED PORCH: 218 sq. ft, PORCH: 55 sq. ft,
FIREPLACE: 11 sq. ft

Floor Plan Created By V1photos.com, Measurements Deamed Highly Reliable But Not Guaranteed.



Disclaimer: Sizes and Dimensions are Approximate, Actual May Vary.



Taylor Haas

303-665-7368

taylorh@coloradorpm.com

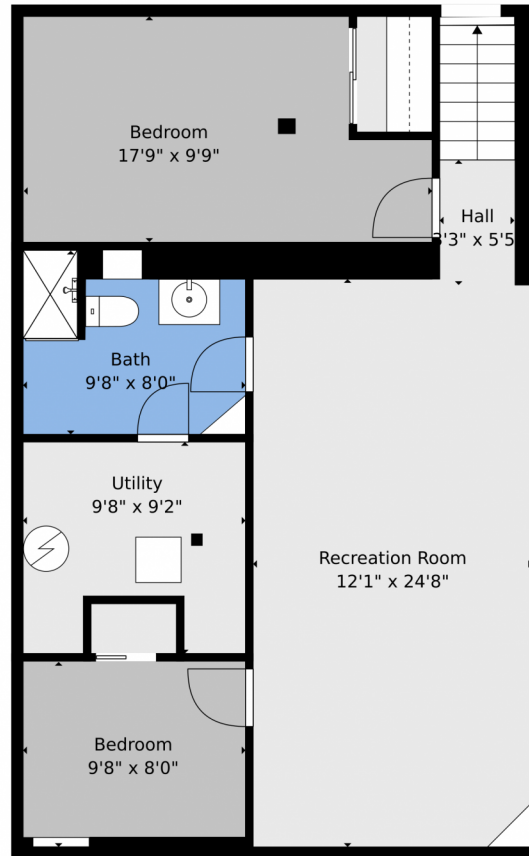
<https://www.coloradorpm.com/available-rental-properties-denver>



Scan code
for more
property
details



928 Jefferson Avenue, Louisville, CO 80027 – Lower Level



TOTAL: 1990 sq. ft
BELOW GROUND: 709 sq. ft, FLOOR 2: 1281 sq. ft
EXCLUDED AREAS: UTILITY: 78 sq. ft, SCREENED PORCH: 218 sq. ft, PORCH: 55 sq. ft,
FIREPLACE: 11 sq. ft

Floor Plan Created By V1photos.com, Measurements Deamed Highly Reliable But Not Guaranteed.



Disclaimer: Sizes and Dimensions are Approximate, Actual May Vary.



Taylor Haas

303-665-7368

taylorh@coloradorpm.com

<https://www.coloradorpm.com/available-rental-properties-denver>



Scan code
for more
property
details



928 Jefferson Avenue, Louisville, CO 80027 – All Levels



TOTAL: 1990 sq. ft
BELOW GROUND: 709 sq. ft, FLOOR 2: 1281 sq. ft
EXCLUDED AREAS: UTILITY: 78 sq. ft, SCREENED PORCH: 218 sq. ft, PORCH: 55 sq. ft,
FIREPLACE: 11 sq. ft

Floor Plan Created By V1photos.com, Measurements Deamed Highly Reliable But Not Guaranteed.



Disclaimer: Sizes and Dimensions are Approximate, Actual May Vary.



Taylor Haas

303-665-7368

taylorh@coloradorpm.com

<https://www.coloradorpm.com/available-rental-properties-denver>



Scan code
for more
property
details

