

Spacious & Updated Home with Walk-Out Basement and Scenic Views



Single Family



2193 SQFT



4 Beds



3/1 Baths



2 Car



0.11 Acre

## PROPERTY DETAILS

Wake up each day with access to the serene North Open Space. This tri-level home features a peaceful backyard with a spacious deck and views of a seasonal stream and nearby trails. Inside, fresh paint and new carpet enhance the open floor plan with vaulted ceilings, rich wood flooring, and a double-sided fireplace. The upper level has three bedrooms and two bathrooms for comfortable living. The finished walk-out basement includes an additional bedroom, full bathroom, and a rec room for guests or entertainment. An Electric Vehicle (EV) outlet in the garage adds convenience. Just one mile from downtown Louisville, this home offers tranquility and easy access to shops and dining. Don't miss this opportunity!



**Jay Kalinski**  
303-489-1050  
jay@kalinskiteam.com



**Cristi Knudsen**  
720-722-4252  
cristiknudsen@remax.net



Scan code  
for more  
property  
details



2335 Dogwood Circle, Louisville, CO 80027 – Lower Level



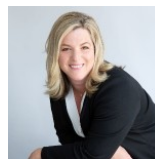
**TOTAL: 1964 sq. ft**  
BELOW GROUND: 521 sq. ft, FLOOR 2: 815 sq. ft, FLOOR 3: 628 sq. ft  
EXCLUDED AREAS: LOW CEILING: 143 sq. ft, COVERED PATIO: 143 sq. ft, UTILITY: 78 sq. ft,  
GARAGE: 384 sq. ft, DECK: 205 sq. ft, PORCH: 35 sq. ft,  
PATIO: 87 sq. ft, WALLS: 204 sq. ft

Floor Plan Created By V1photos.com, Measurements Deamed Highly Reliable But Not Guaranteed.

Disclaimer: Sizes and Dimensions are Approximate, Actual May Vary.



**Jay Kalinski**  
303-489-1050  
jay@kalinskiteam.com



**Cristi Knudsen**  
720-722-4252  
cristiknudsen@remax.net



Scan code  
for more  
property  
details





**TOTAL: 1964 sq. ft**  
BELOW GROUND: 521 sq. ft, FLOOR 2: 815 sq. ft, FLOOR 3: 628 sq. ft  
EXCLUDED AREAS: LOW CEILING: 143 sq. ft, COVERED PATIO: 143 sq. ft, UTILITY: 78 sq. ft,  
GARAGE: 384 sq. ft, DECK: 205 sq. ft, PORCH: 35 sq. ft,  
PATIO: 87 sq. ft, WALLS: 204 sq. ft

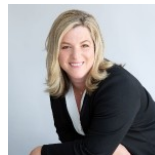
Floor Plan Created By V1photos.com, Measurements Deamed Highly Reliable But Not Guaranteed.



Disclaimer: Sizes and Dimensions are Approximate, Actual May Vary.



**Jay Kalinski**  
303-489-1050  
jay@kalinskiteam.com



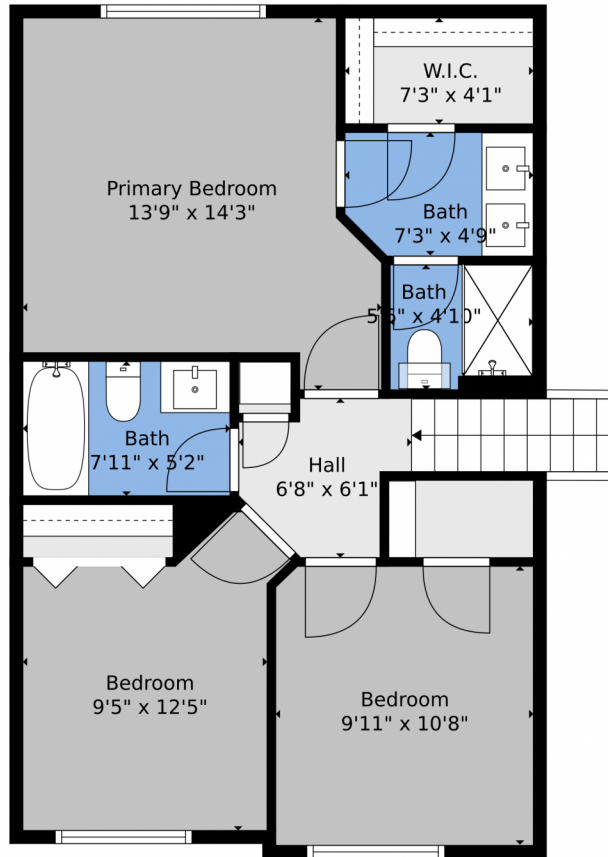
**Cristi Knudsen**  
720-722-4252  
cristiknudsen@remax.net



Scan code  
for more  
property  
details



# 2335 Dogwood Circle, Louisville, CO 80027 – 2nd Level



**TOTAL: 1964 sq. ft**  
BELOW GROUND: 521 sq. ft, FLOOR 2: 815 sq. ft, FLOOR 3: 628 sq. ft  
EXCLUDED AREAS: LOW CEILING: 143 sq. ft, COVERED PATIO: 143 sq. ft, UTILITY: 78 sq. ft,  
GARAGE: 384 sq. ft, DECK: 205 sq. ft, PORCH: 35 sq. ft,  
PATIO: 87 sq. ft, WALLS: 204 sq. ft

Floor Plan Created By V1photos.com, Measurements Deamed Highly Reliable But Not Guaranteed.



Disclaimer: Sizes and Dimensions are Approximate, Actual May Vary.



**Jay Kalinski**  
303-489-1050  
jay@kalinskiteam.com



**Cristi Knudsen**  
720-722-4252  
cristiknudsen@remax.net



Scan code  
for more  
property  
details



# 2335 Dogwood Circle, Louisville, CO 80027 – All Levels



**TOTAL: 1964 sq. ft**  
 BELOW GROUND: 521 sq. ft, FLOOR 2: 815 sq. ft, FLOOR 3: 628 sq. ft  
 EXCLUDED AREAS: LOW CEILING: 143 sq. ft, COVERED PATIO: 143 sq. ft, UTILITY: 78 sq. ft,  
 GARAGE: 384 sq. ft, DECK: 205 sq. ft, PORCH: 35 sq. ft,  
 PATIO: 87 sq. ft, WALLS: 204 sq. ft

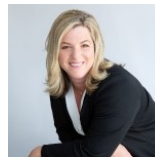
Floor Plan Created By V1photos.com, Measurements Deamed Highly Reliable But Not Guaranteed.



Disclaimer: Sizes and Dimensions are Approximate, Actual May Vary.



**Jay Kalinski**  
 303-489-1050  
 jay@kalinskiteam.com



**Cristi Knudsen**  
 720-722-4252  
 cristiknudsen@remax.net



Scan code  
 for more  
 property  
 details

